

**RECORD OF SURVEY
FOR
TOM GALLEGO**

BEING A PORTION OF THE SW 1/4 OF
SW 1/4 OF SECTION 34,
T.7N., R.12E., M.D.M.
AMADOR COUNTY, CALIFORNIA

SCALE: 1"=40' JANUARY, 2009

SURVEYOR'S STATEMENT

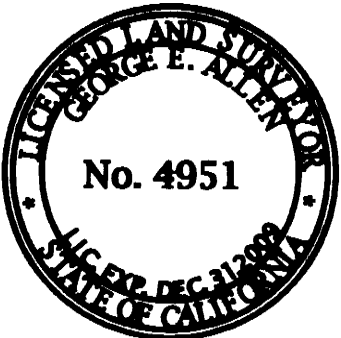
THIS MAP CORRECTLY REPRESENTS A SURVEY MADE BY ME OR UNDER
MY DIRECTION IN CONFORMANCE WITH THE REQUIREMENTS OF THE
PROFESSIONAL LAND SURVEYORS ACT AT THE REQUEST OF TOM
GALLEGO IN OCTOBER, 2008



Steven W. Brown
STEVEN W. BROWN L.S. 5257
LIC. EXP. 12-31-09

COUNTY SURVEYOR'S STATEMENT

THIS MAP HAS BEEN EXAMINED IN ACCORDANCE WITH SECTION 8766
OF THE PROFESSIONAL LAND SURVEYORS ACT THIS 5th
DAY OF FEBRUARY 2009.



George E. Allen
GEORGE E. ALLEN L.S. 4951
AMADOR COUNTY SURVEYOR
LIC. EXP. 12-31-09

RECORDER'S STATEMENT

FILED THIS 13th DAY OF February 2009 AT 2:16 P.M.
IN BOOK 61 OF MAPS AND PLATS AT PAGE 50 AT THE
REQUEST OF THE AMADOR COUNTY SURVEYOR.

FEE: \$ 10⁰⁰ pt. filed INSTRUMENT No.: 20090001163

Sheldon D. Johnson *Kim Grady*
SHELDON D. JOHNSON DEPUTY
AMADOR COUNTY RECORDER

STEVEN W. BROWN- LAND SURVEYING

27 MAIN ST. JACKSON, CA 95642 (209)223-1061

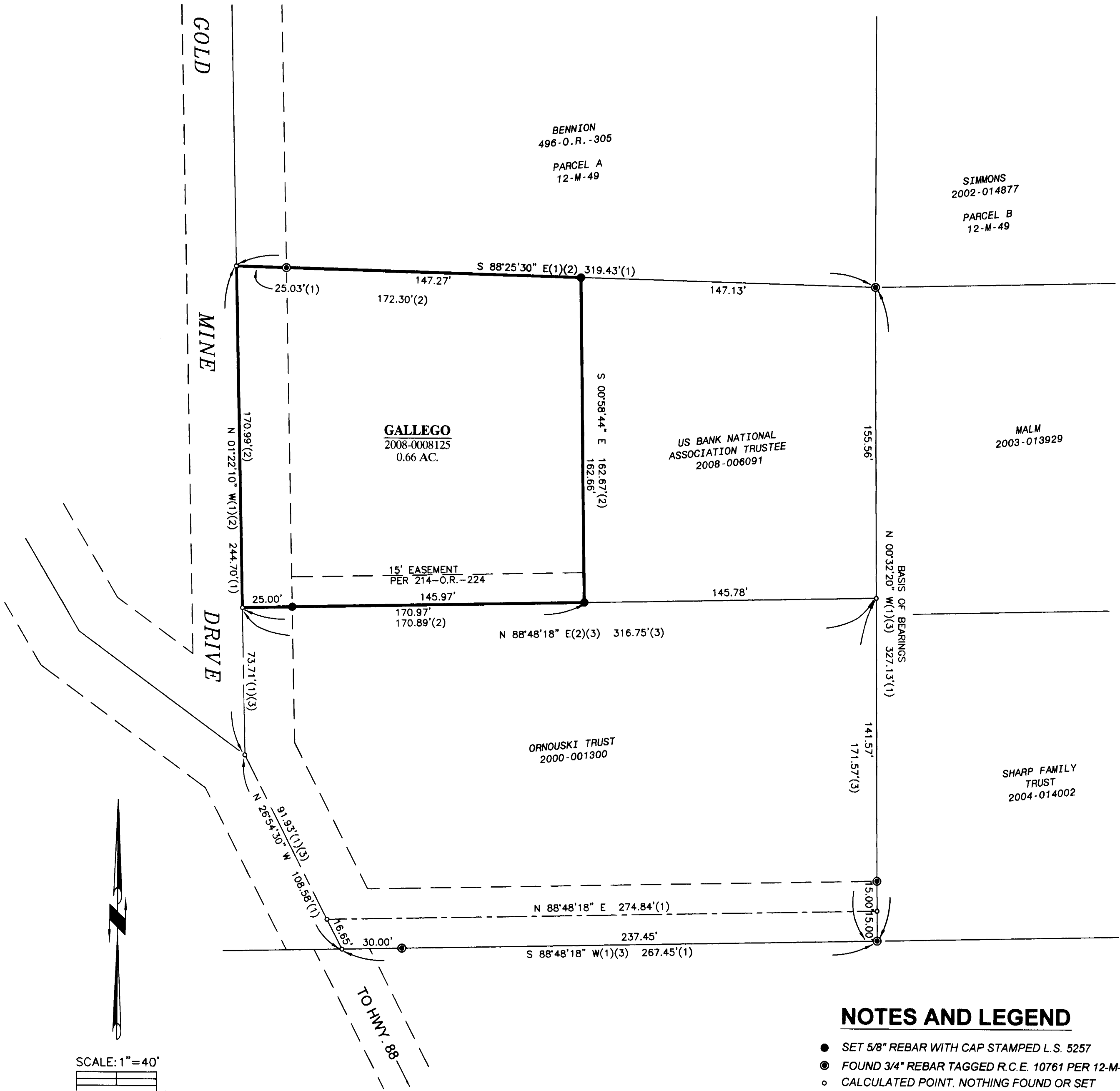
SCALE: 1"=40' JAN. 2009 W.O. 3661

NOTES AND LEGEND

- SET 5/8" REBAR WITH CAP STAMPED L.S. 5257
- ⊙ FOUND 3/4" REBAR TAGGED R.C.E. 10761 PER 12-M-49
- CALCULATED POINT, NOTHING FOUND OR SET

- (1) RECORD DATA PER 12-M-49
- (2) RECORD DATA PER 2008-0002173
- (3) RECORD DATA PER 2000-001300

THE BASIS OF BEARINGS AS SHOWN HEREON IS N 00°32'20" W PER 12-M-49.



SCALE: 1"=40'
0 40'