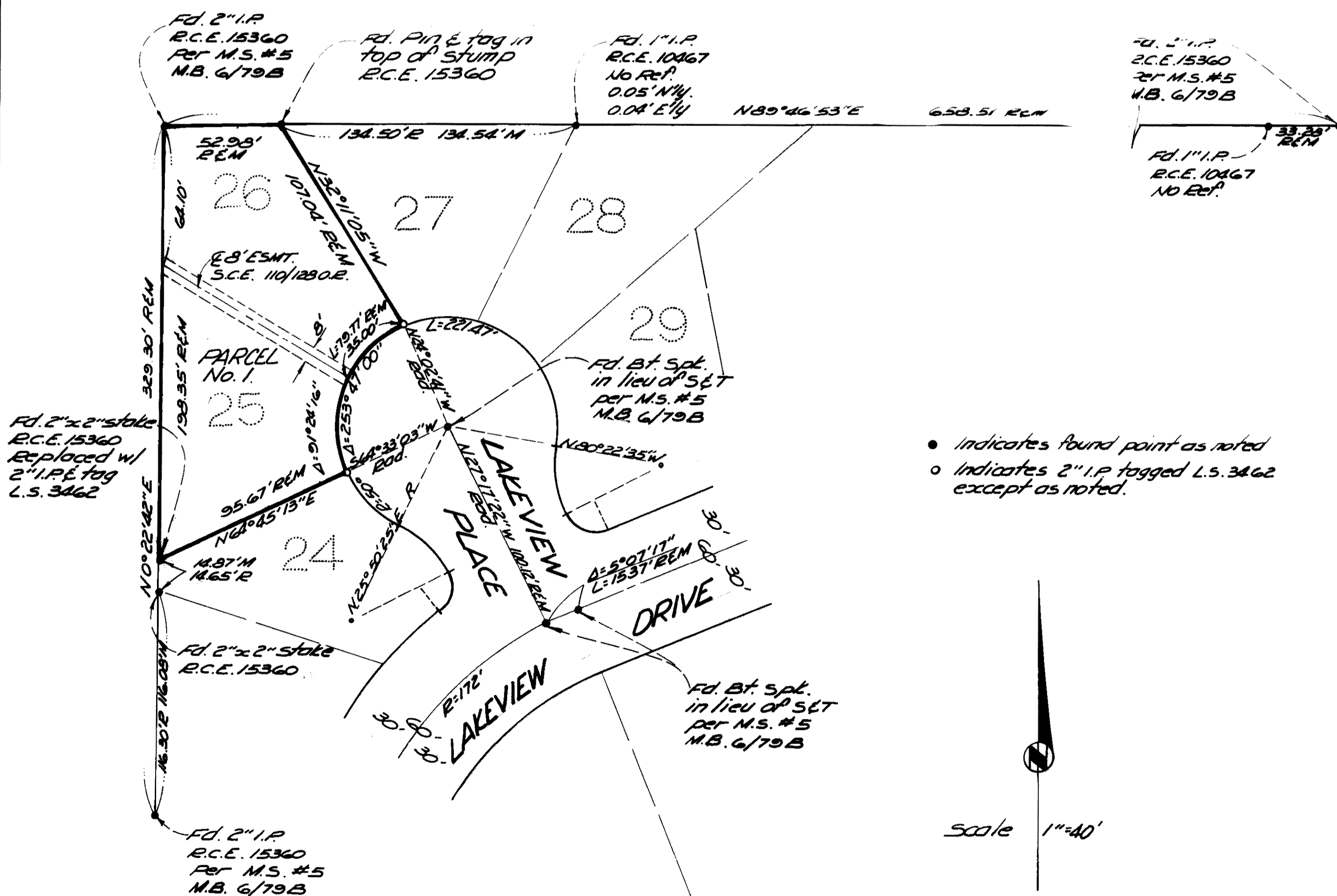


PARCEL MAP 36-101

IN THE COUNTY OF MONO, STATE OF CALIFORNIA,
BEING A SUBDIVISION OF LOTS 25 & 26 OF MAMMOTH
SLOPES NUMBER 5 PER MAPS RECORDED IN BOOK
6, PAGES 79, 79A, 79B & 79C IN THE OFFICE OF THE
COUNTY RECORDER OF SAID COUNTY BEING ALSO
A PORTION OF THE SE QUARTER OF SECTION 28,
TOWNSHIP 3 SOUTH, RANGE 27 EAST, M.D.M.

Basis of Bearings:

The bearing of $N89^{\circ}46'53''E$ on the North
boundary of Mammoth slopes No. 5 was
used as the basis of bearings for this map.



The location and width of easements per O.E. 107/223 for aerial and underground electric lines and communication lines in favor of Southern California Edison Company cannot be determined from public record.

The location and width of easements per O.E. 107/239 and O.E. 107/536 for aerial and underground telephone telegraph and communication structures in favor of California Telephone Company cannot be determined from public record.

The location and width of easements per O.E. 108/112 for water transmission pipeline and sewage pipeline in favor of Mammoth County water District cannot be determined from public record.