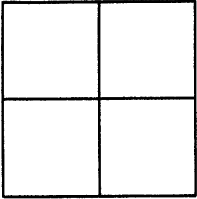


Document Number CR 1309City of BERKELEYCounty of ALAMEDA, CaliforniaLegal Description MONUMENT ON NORTHAMPTON AVE. APPROX. 120' NORTHERLY
OF SANTA BARBARA RD.**CORNER RECORD**

Government Corner ☐ Control ☐
 Meander ☐ Property ☐
 Rancho ☐ Other ☒
 Date of Survey 10-15-99

**COORDINATES
(Optional)**

N. _____
 E. _____
 Zone _____ Datum _____
 Elev. _____

Corner — Left as found ☐ Found and tagged ☐ Established ☐ Reestablished ☒ Rebuilt ☐

In conformance with Section 8771 of the Professional Land Surveyors' Act this corner record is being filed to
 ESTABLISH _____ / REESTABLISH X the position of an existing monument PRIOR _____ / SUBSEQUENT X
 to street or highway reconstruction.

Identification and type of corner found: Evidence used to identify or procedure used to establish or reestablish the corner:

STANDARD CITY OF BERKELEY STREET MONUMENT, WITHIN ROADWAY.

A description of the physical condition of the monument as found and as set or reset: _____

MONUMENT WAS REFERENCED;

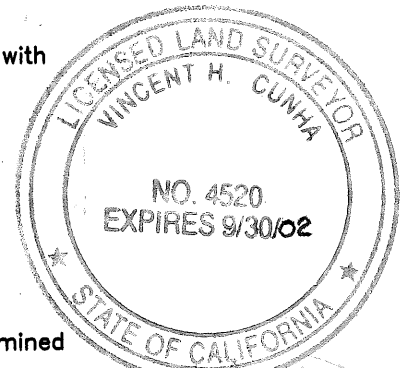
MONUMENT WAS REMOVED DURING CONSTRUCTION AND RESET AFTER

CONSTRUCTION WAS COMPLETED.

SURVEYOR'S STATEMENT

This Corner Record was prepared by me or under my direction in conformance with
 the Land Surveyors' Act on NOVEMBER, 19 19 99.

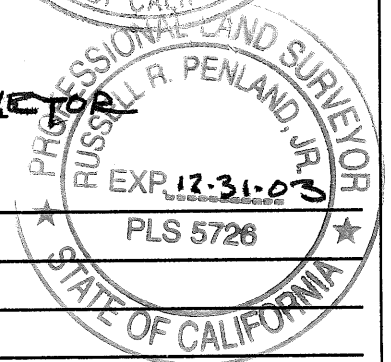
Signed Vincent H. Cunha L.S. Number L5 4520
VINCENT H. CUNHA

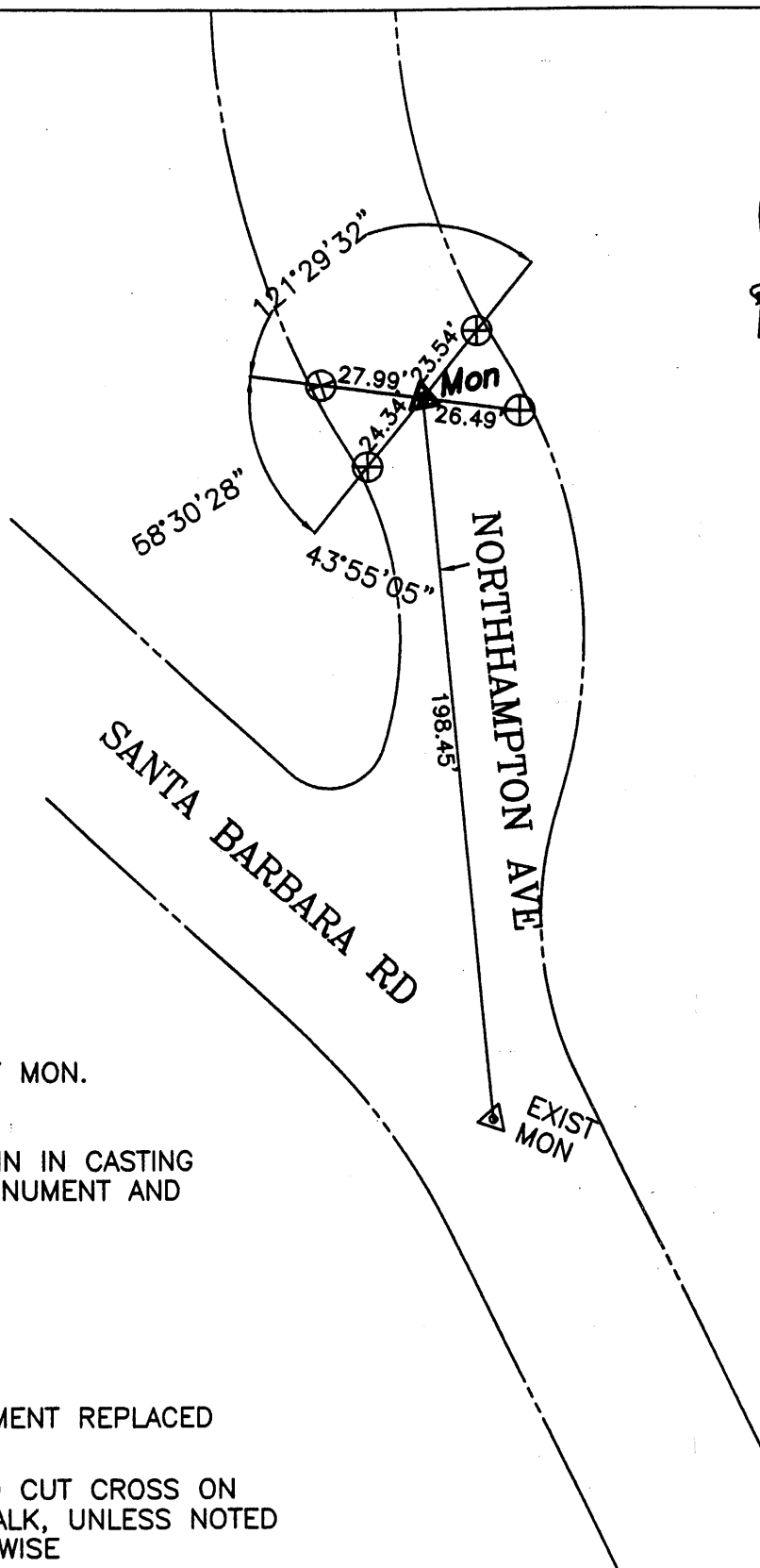
**COUNTY SURVEYOR'S STATEMENT**

This Corner Record was received 1-12-2000 19— and examined
 and filed 5-4-2000 19—.

Signed Russell R. Penland, Jr. Title DEPUTY COUNTY SURVEYOR

County Surveyor's Comment _____





CITY OF BERKELEY MON.
No. M5070010

REPLACED IRON PIN IN CASTING
WITH STD CITY MONUMENT AND
DISC.

LEGEND



MONUMENT REPLACED



FOUND CUT CROSS ON
SIDEWALK, UNLESS NOTED
OTHERWISE

(M-M)

MONUMENT TO MONUMENT DIST.

NOTE

ALL RP's ARE 180° UNLESS NOTED OTHERWISE

CR-009-99034