

McADAMS

The John R. McAdams Company, Inc.
2905 Meridian Parkway
Durham, NC 27713

phone 919. 361. 5000
fax 919. 361. 2269
license number: C-0293, C-187

www.mcadamsco.com

CLIENT

CAPITAL GROWTH BUCHALTER
361 SUMMIT BLVD, STE 100
BIRMINGHAM, ALABAMA
PHONE: 205.263.4589

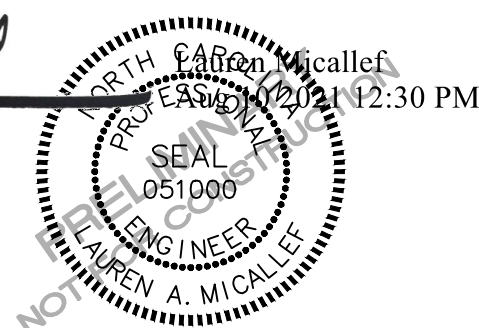


STARBUCKS - BURLINGTON RD
MINOR SITE PLAN SUBMITTAL
6405 BURLINGTON ROAD
WHITSETT, NORTH CAROLINA 27377

3403 BURLINGTON ROAD
WHITSETT, NORTH CAROLINA 27377

3403 BURLINGTON ROAD
WHITSETT, NORTH CAROLINA 27377

3403 BURLINGTON ROAD
WHITSETT, NORTH CAROLINA 27377



REVISIONS

NO.	DATE	
1	08.10.2021	REVISED PER STARBUCKS & COUNTY COMMENT
2	-	-
3	-	-
4	-	-
5	-	-
6	-	-

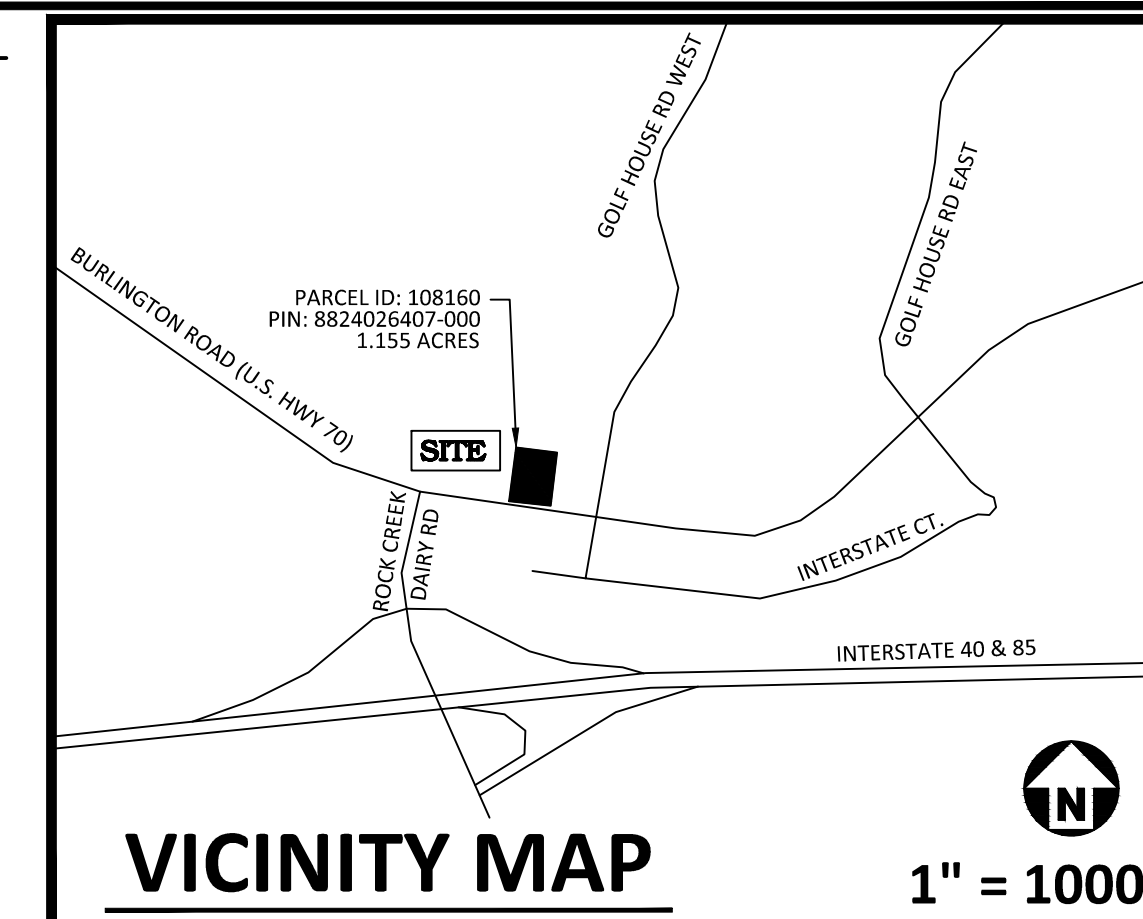
PLAN INFORMATION

PROJECT NO.	CGB-20050
FILENAME	CGB20050X-EC
CHECKED BY	LAW
DRAWN BY	LAM
SCALE	1" = 20'
DATE	03. 25. 2021

SHEET

EROSION CONTROL PLAN - STAGE 2

C6.01



STAGE 2 SPECIFIC SEQUENCE

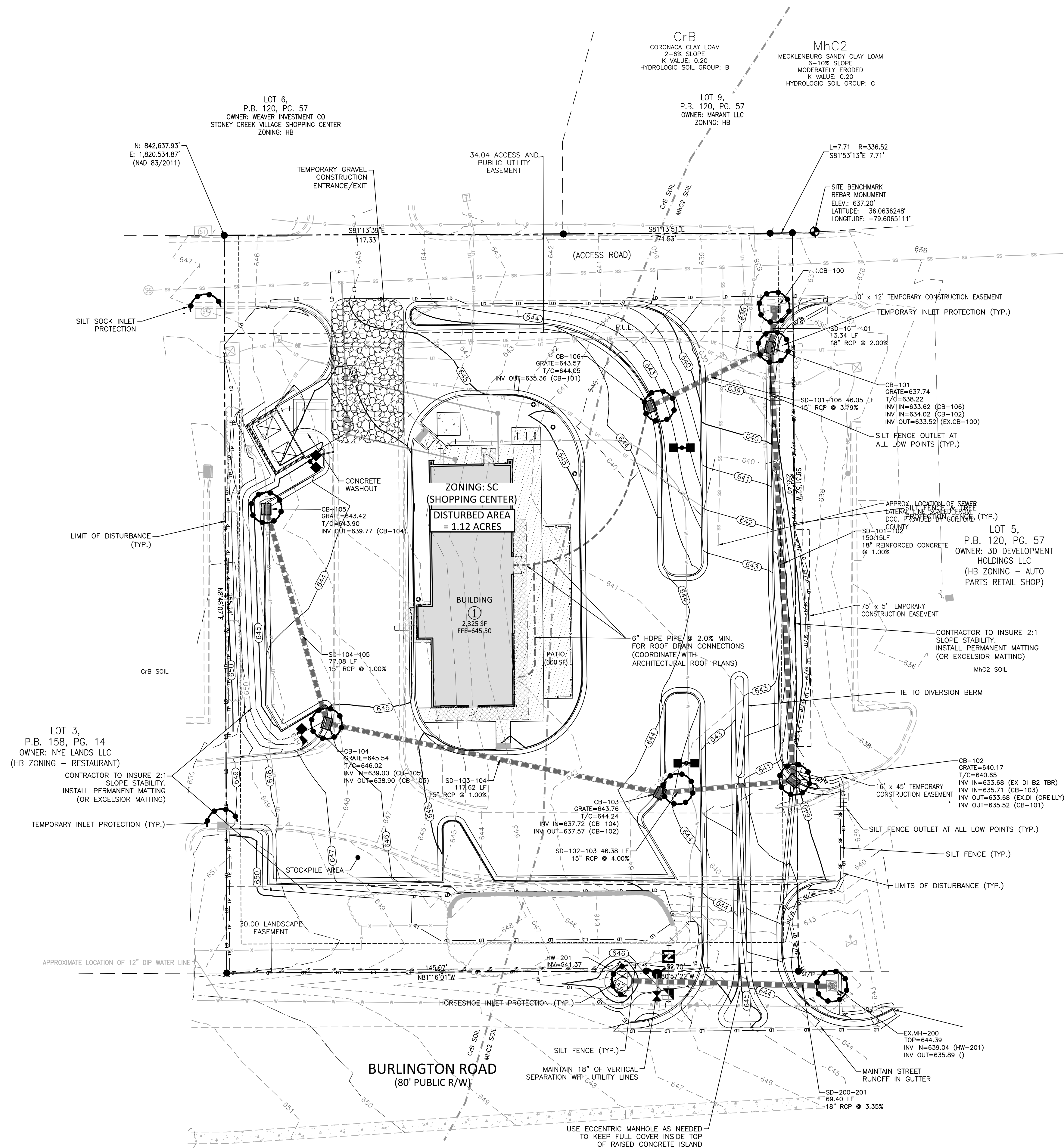
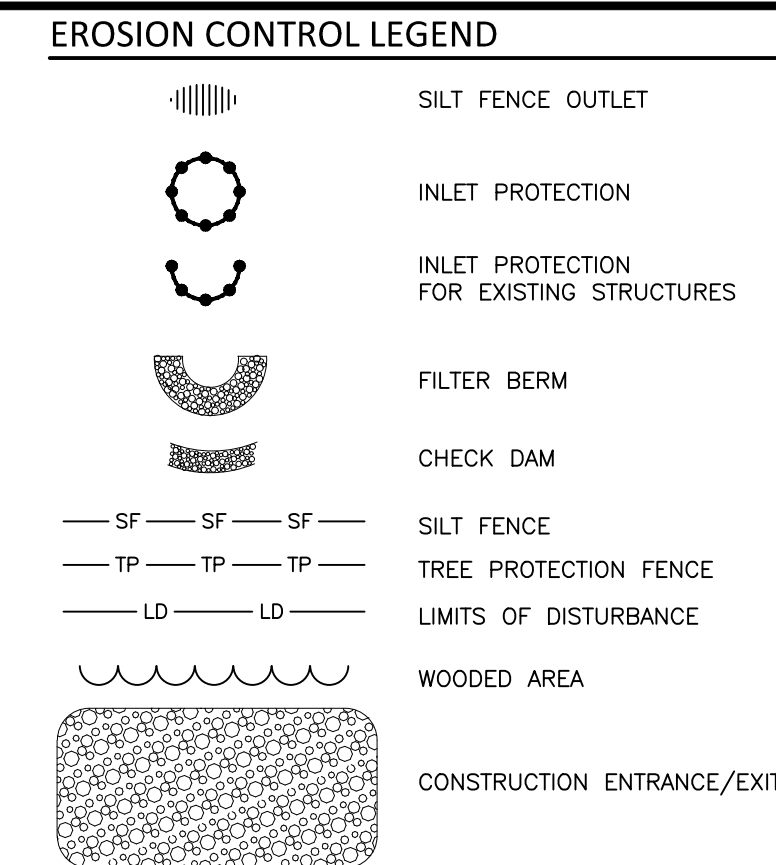
1. SEE SHEET C-6.00 FOR "EROSION CONTROL NOTES" AND "GENERAL SEQUENCING" NOTES
2. INSTALL THE REMAINDER OF THE STORM COLLECTION SYSTEM WITH INLET PROTECTION, BUILDING PAD, LIFT, SEWER SERVICES, AND DOMESTIC WATER SERVICES, AS THE REMAINDER OF THE PARKING LOT IS BROUGHT TO FINAL GRADE, IMMEDIATELY STABILIZE WITH STONE BASE.
3. INSTALL APPROVED INLET PROTECTION AS INLETS ARE INSTALLED. TEMPORARY EROSION CONTROL MEASURES ARE TO REMAIN UNTIL SUCH MEASURES HAVE BEEN APPROVED FOR REMOVAL BY THE ENVIRONMENTAL ENGINEER AND EROSION CONTROL INSPECTOR. ADDITIONAL MEASURES MAY BE REQUIRED BY THE INSPECTOR TO THE ROUTING OF THE STORM DRAINAGE SYSTEM AND FIELD CONDITIONS.
4. MAINTAIN EROSION CONTROL MEASURES WEEKLY AND AFTER EACH RAIN EVENT THROUGHOUT CONSTRUCTION.
5. UPON APPROVAL OF PERMANENT STABILIZATION BY EROSION CONTROL INSPECTOR, REMOVE REMAINDER OF EROSION CONTROL MEASURES, GRADE AND STABILIZE, AND PAVE REMAINDER OF SITE.

RECEIVING WATERS

THE SITE DRAINS THROUGH A SERIES OF EXISTING UNDERGROUND PIPES TO A WET DETENTION POND
LOCATED APPROXIMATELY 700 FEET NORTH OF THE SITE. (SEE PLAT BOOK 120 - PAGE 57 FOR DETAILS)

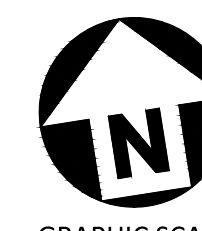
THE WET POND WILL DRAIN TO ROCK CREEK AND THEN LAKE MACKINTOSH

THE PROPOSED BUILT UP AREA (BUA) FOR THE SITE IS LESS THAN THE MAXIMUM BUA SHOWN ON PLAT BOOK 158 PAGE 14. (SEE COVER SHEET FOR DETAILS)



**Know what's below.
Call before you dig.**

ALL CONSTRUCTION SHALL BE IN ACCORDANCE
WITH THE CURRENT GUILFORD COUNTY
ENGINEERING DESIGN AND CONSTRUCTION
STANDARDS



GRAPHIC SCALE

0 10 20

1 inch = 20 ft.

PRELIMINARY DRAWING - NOT RELEASED FOR CONSTRUCTION