

Basis of Bearings
The bearing of the center line of Joaquin Road (North) as shown upon that certain map of Los Alamos Acres has used as the basis for bearings shown upon this map.

- Indicates Iron Pipe set.
- Indicates PK nail found.
- ◻ Indicates original 2x4 hubbail found.

SURVEYOR'S CERTIFICATE

This map correctly represents a survey made by me or under my direction in conformance with the requirements of Chapter 15 of Division 3 of the Business and Professions Code at the request of Alfred E. Enochs, in Sept. 1957.

James B. Baker Reg. No. 7848
County Surveyor

COUNTY SURVEYOR'S CERTIFICATE

This map has been examined for conformance with the requirements of Chapter 15 of Division 3 of the Business and Professions Code this 11th day of Oct. 1957.

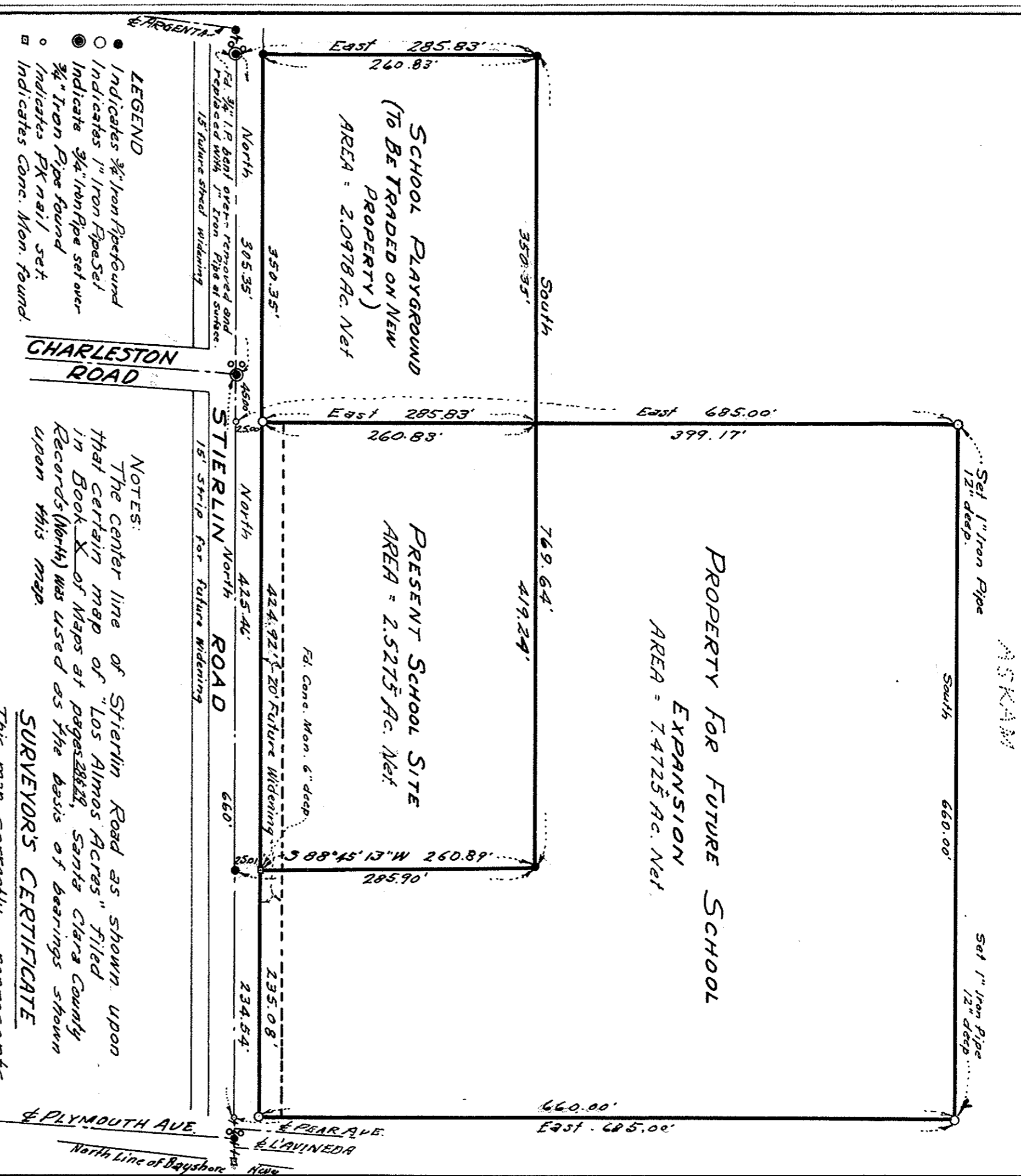
James B. Enoch
Acting County Surveyor
By Deputy: *[Signature]*

RECORDER'S CERTIFICATE

1393539
Filed for record this 15 day of Oct. 1957, at _____ the
12:53 P.M. in Book 87 of Maps, and at page 15 of the
request of Lloyd B. Baker, Syl C. Tully
County Recorder

RECORD OF SURVEY

of Lots 14 and 15 of Los Alamos Acres.
Santa Clara County, California
by **LLOYD B. BAKER** Scale 1" = 100'
Sept. 1957
Civil Engineer - Land Surveyor
Mountain View, California



LEGEND
● Indicates 3/4" Iron Pipe found
○ Indicates 1" Iron Pipe set
◻ Indicates 3/4" Iron Pipe set over
● Indicates PK nail found
◻ Indicates conc. Mon. found.

NOTES:
The center line of Stierlin Road as shown upon that certain map of "Los Alamos Acres" filed in Book 87 of Maps at page 15 of the request of G. Arthur Tinnall, Stat. of Schools, in June, 1957.

COUNTY SURVEYOR'S CERTIFICATE

This map has been examined for conformance with the requirements of Chapter 15 of Division 3 of the Business and Professions Code this 11th day of October 1957.

James B. Baker Reg. No. 7848
County Surveyor

RECORDER'S CERTIFICATE

Recorder's File No. 1393540
Filed at the request of Lloyd B. Baker at 5:33 minutes past 12 o'clock P.M. on this 15 day of Oct. 1957, in Book 87 of Maps, Page 15, Santa Clara County Records.

Syl C. Tully
County Recorder
By Deputy: *[Signature]*

RECORD OF SURVEY

of the Whisman School property, being portions of Sections 9 & 10 T6S R2W.
LLOYD B. BAKER
1626 Monahito Drive
Mountain View, California
June 1957 Scale: 1" = 100'