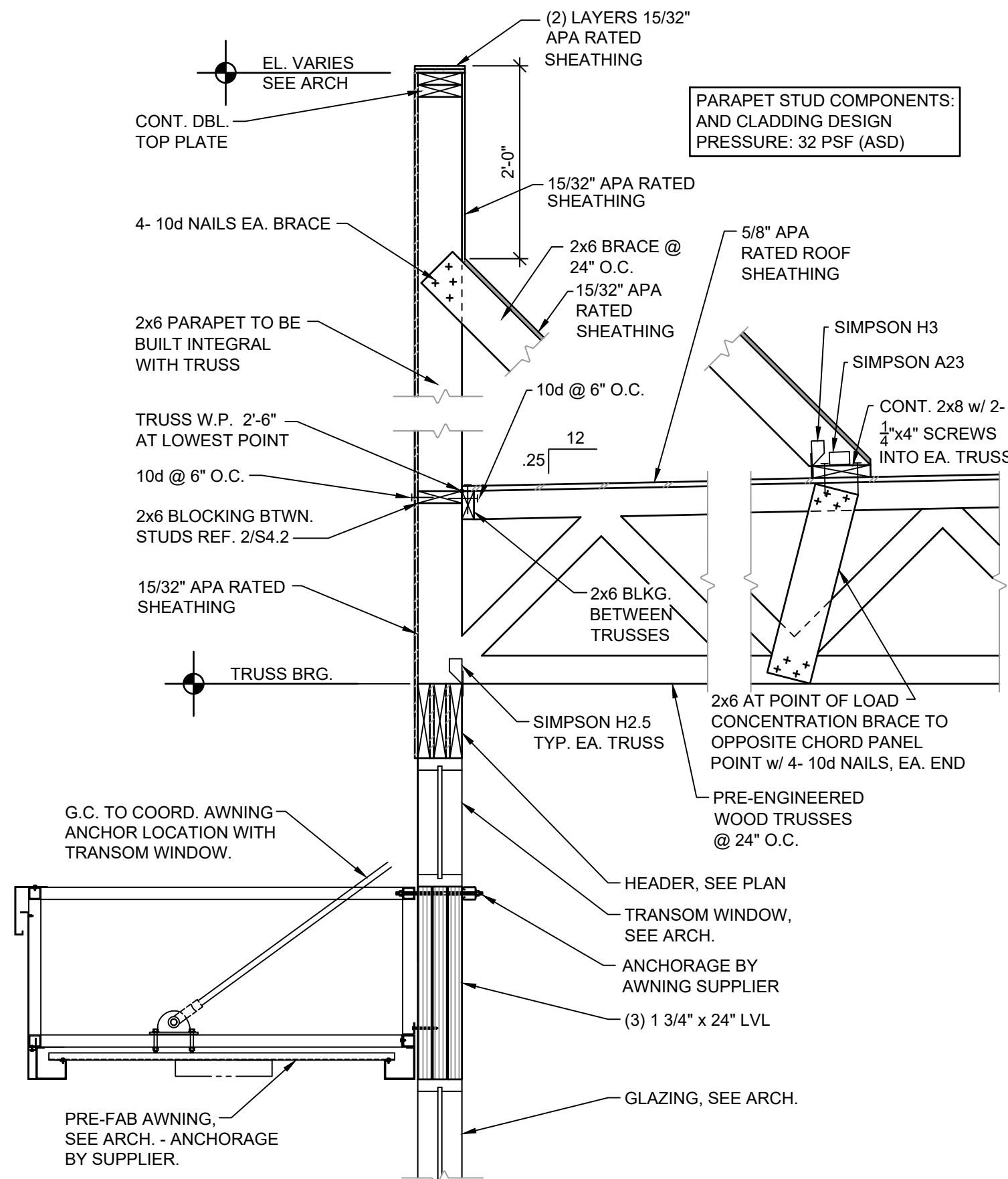
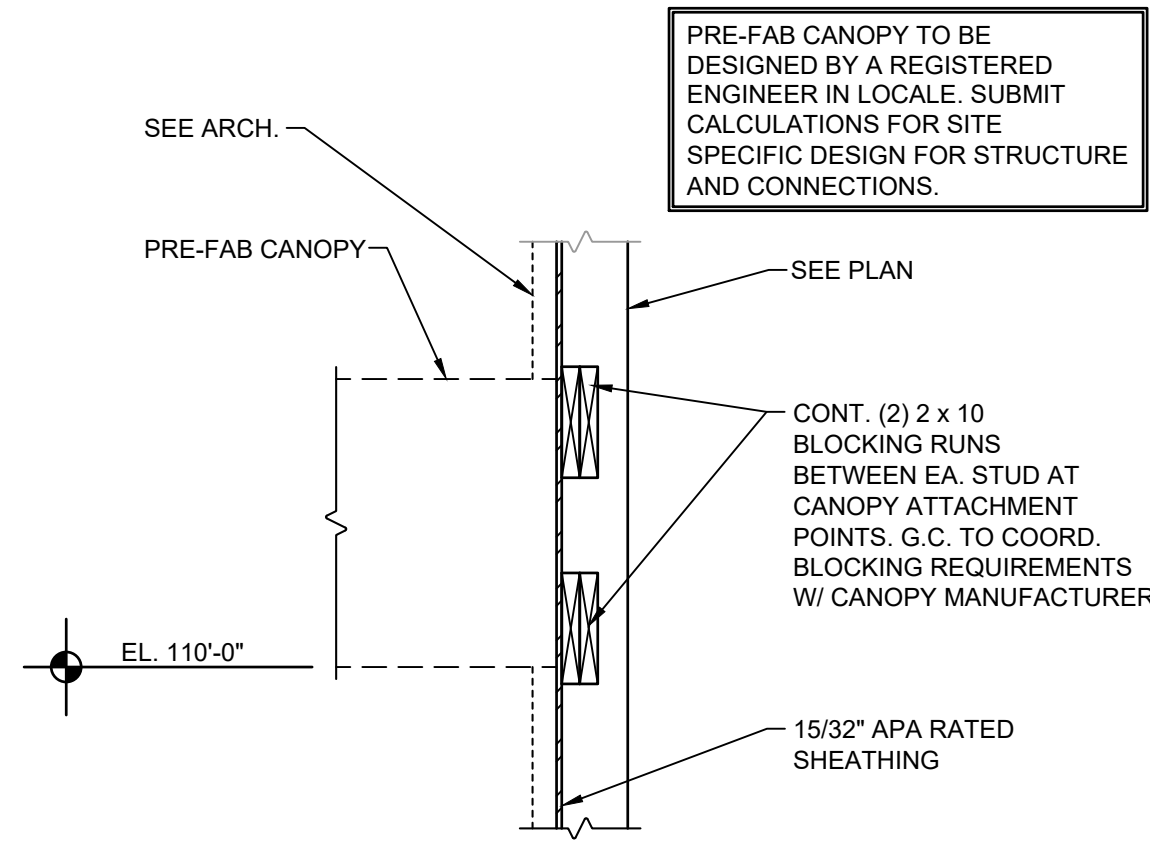


1 TYPICAL OPENING ELEVATION AT OPENINGS WITH TRANSOM WINDOWS
SCALE: 3/4" = 1'-0"

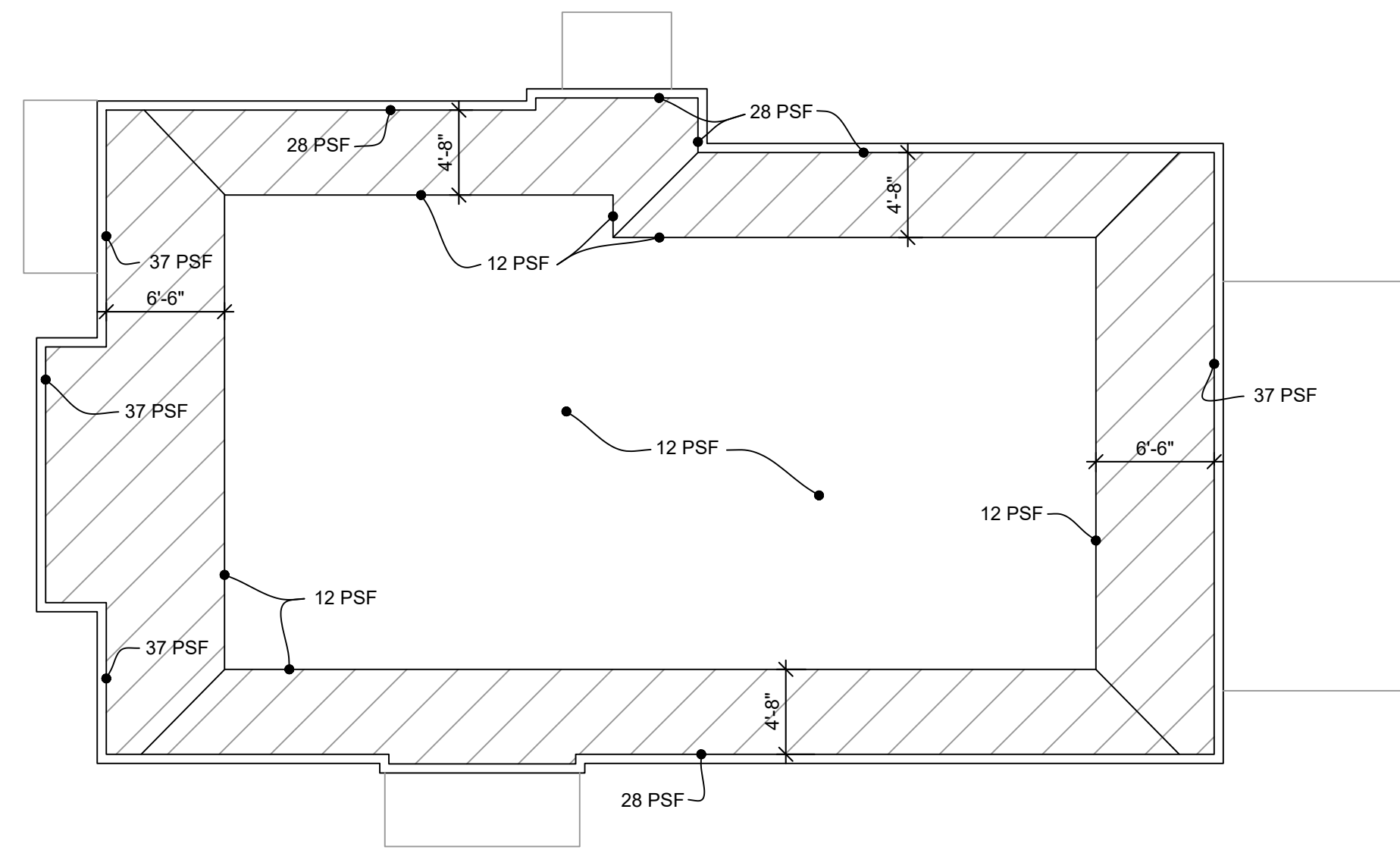


2 FRAMING SECTION
SCALE: 3/4" = 1'-0"

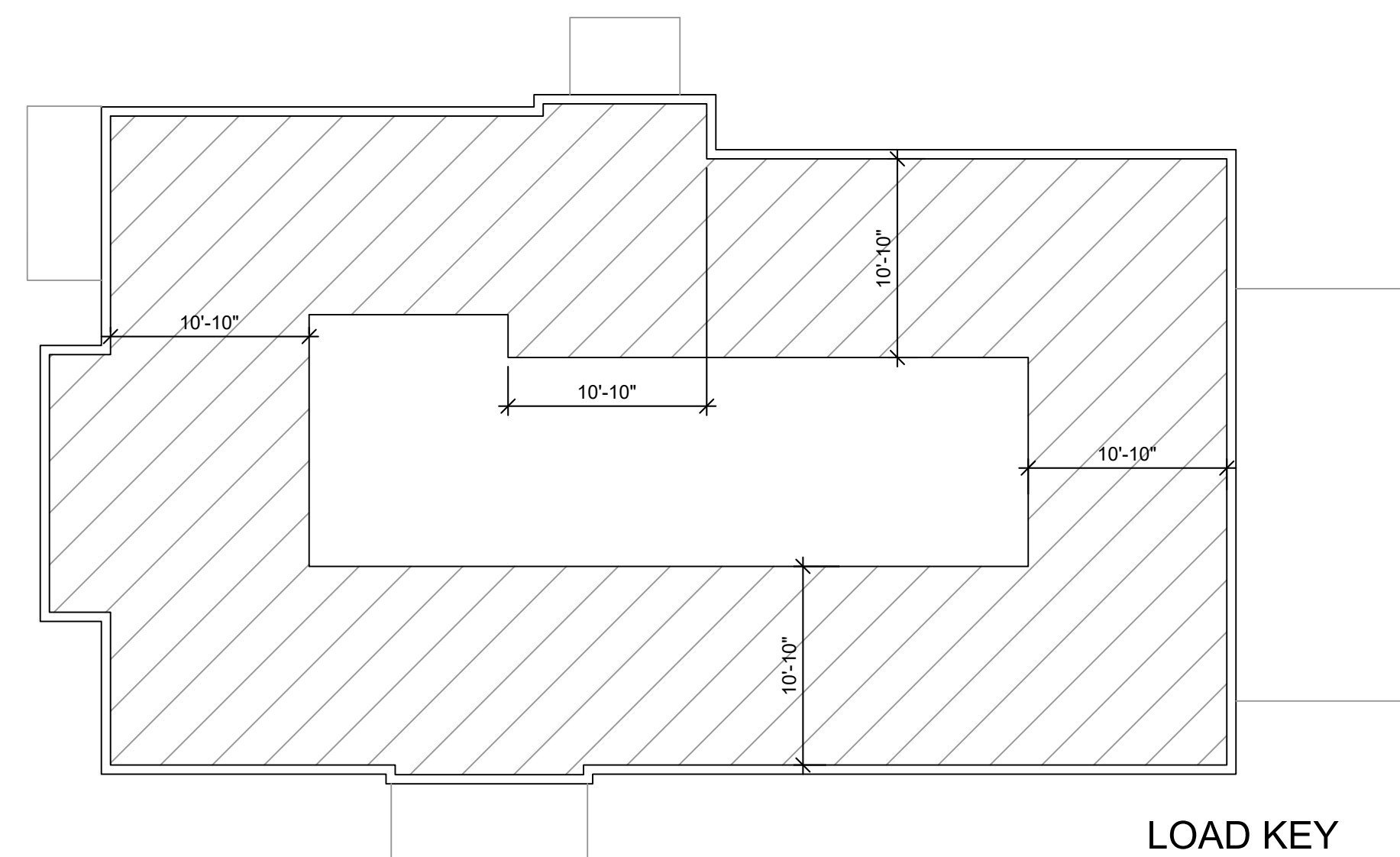


3 FRAMING SECTION
SCALE: 3/4" = 1'-0"

4 FRAMING SECTION
SCALE: 3/4" = 1'-0"

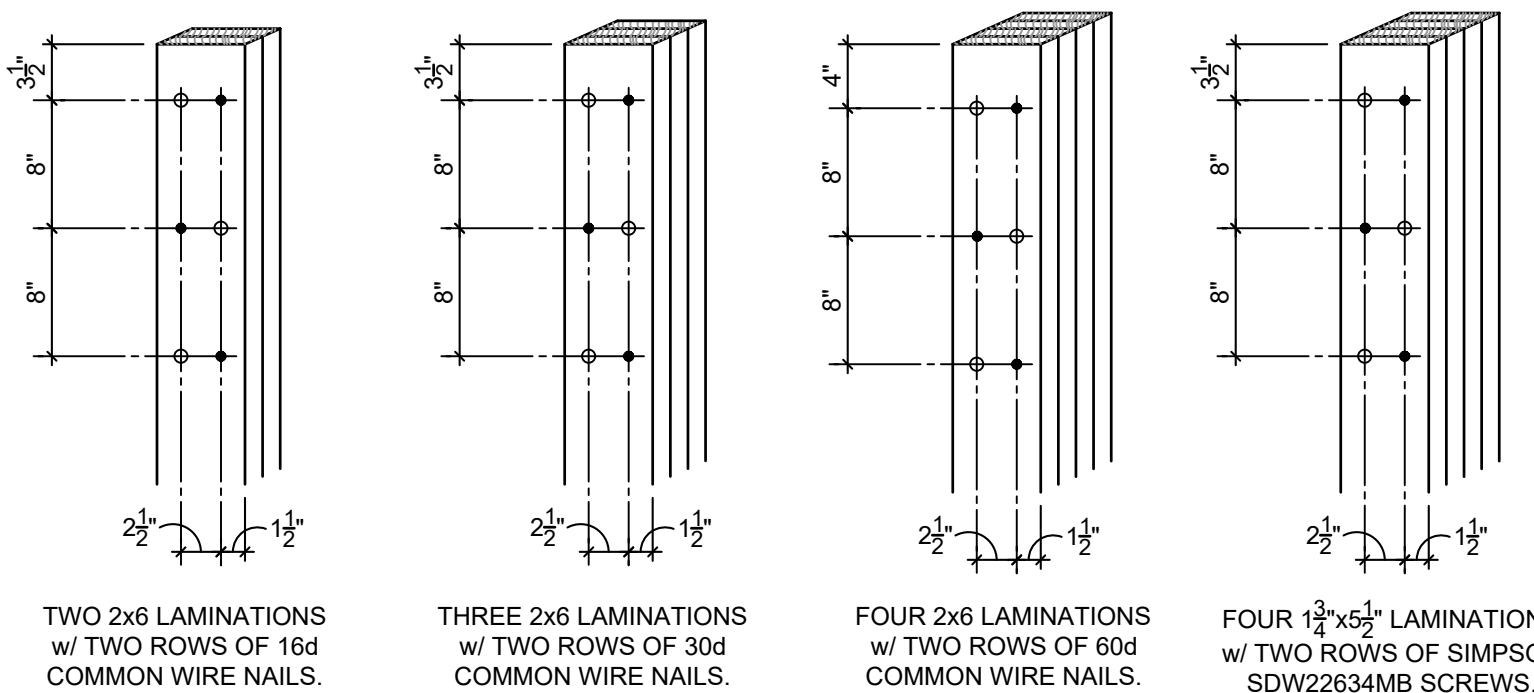


8 SNOW DRIFT DIAGRAM
SCALE: NONE

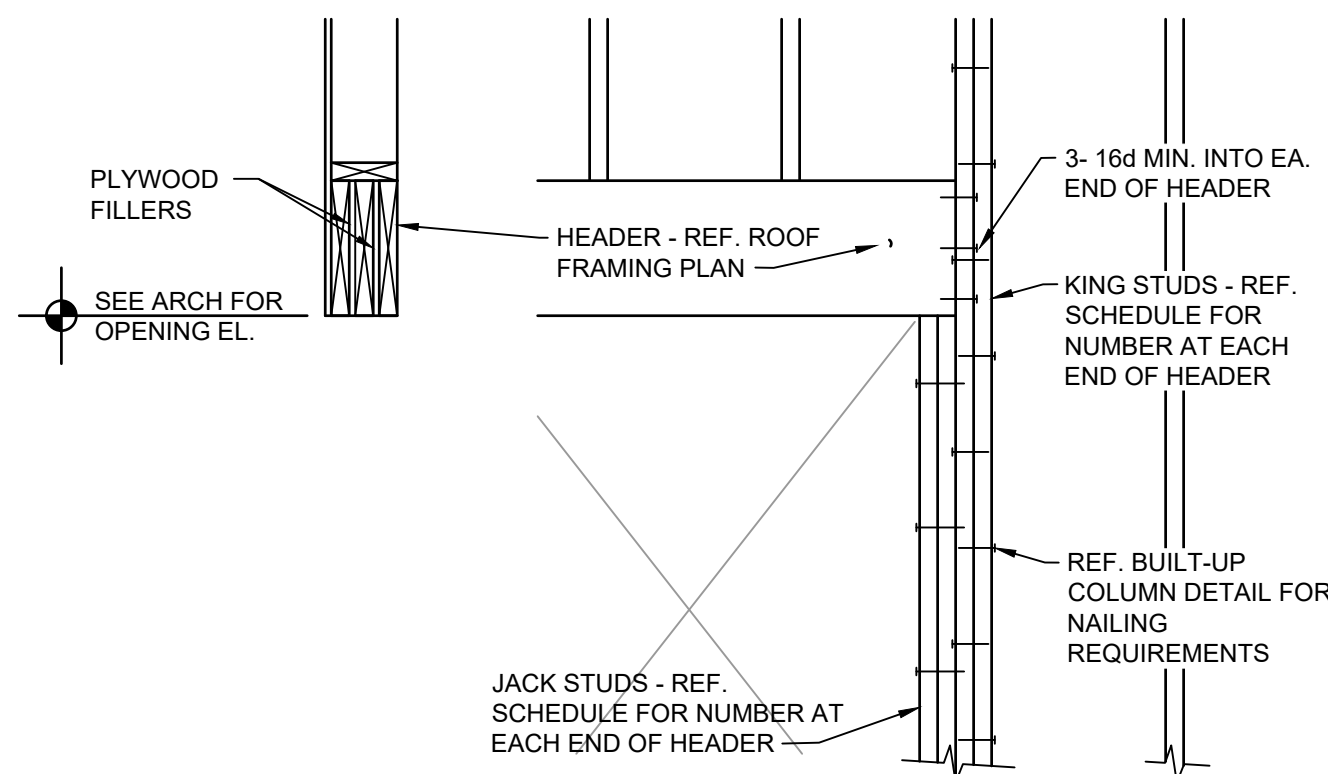


9 WIND UP-LIFT DIAGRAM
SCALE: NONE

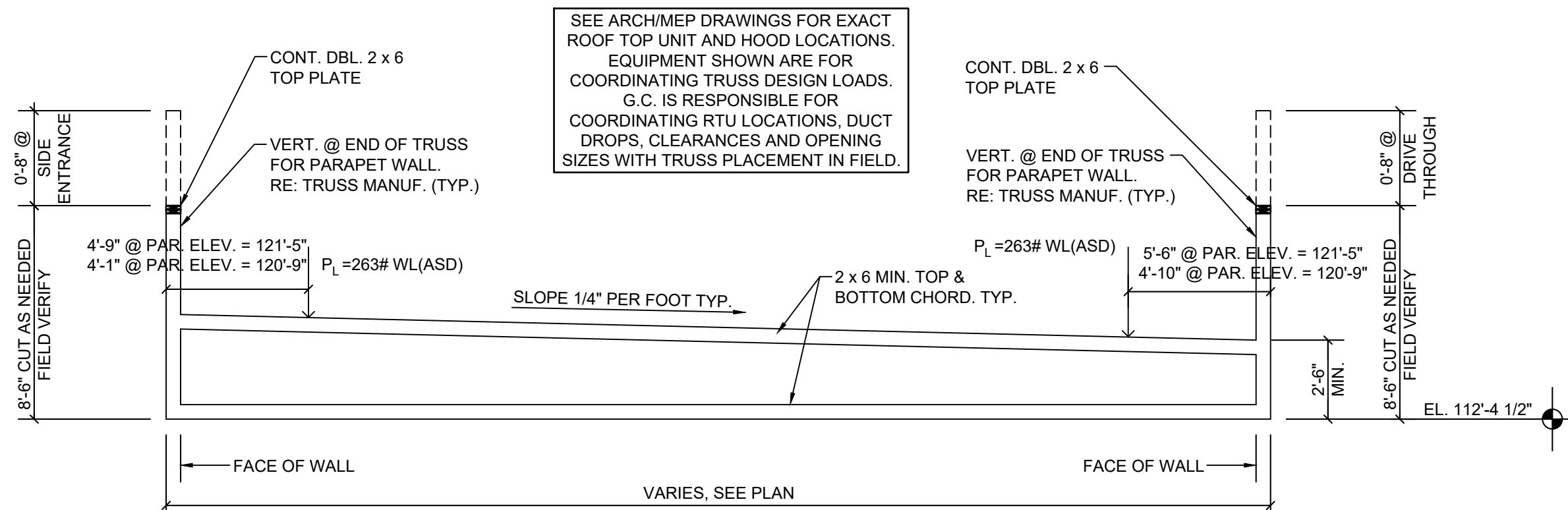
WOOD HEADER/STUD SCHEDULE				
MARK	SIZE	JACK STUDS	KING STUDS	REMARKS
H1	3-2x8	1-2x	2-2x	
H2	3-2x10	2-2x	3-2x	
H3	3-2x12	2-2x	3-2x	
H4	3-1 3/4"x9 1/2" LVL	2-2x	3-2x	
H5	3-2x6	NA	NA	SIMPSON HUC26-3 EA. END



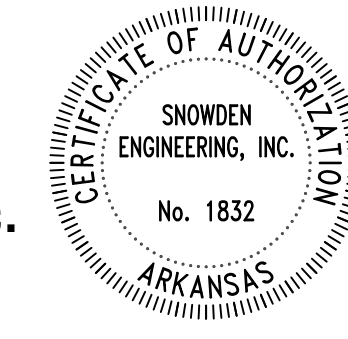
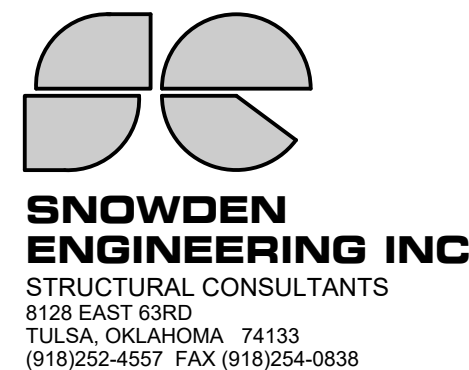
6 TYPICAL NAILING DETAIL FOR BUILT-UP COLUMNS
SCALE: 1" = 1'-0"



5 TYPICAL FRAMED OPENING ELEVATION
SCALE: 3/4" = 1'-0"



7 TRUSS PROFILE
SCALE: NONE



White Design Group, P.C.
Restaurant and Interiors Consulting
5801 EAST 41ST STREET, SUITE 712, TULSA, OKLAHOMA 74135



NEW RESTAURANT FOR:
ARBY'S - INSPIRE DUAL REG 40 - STD
241 US HIGHWAY 425
MONTICELLO, AR 71655
FOR
RB AMERICAN GROUP
6200 OAK TREE BLVD, INDEPENDENCE, OH 44131

PROJECT NUMBER: 220979	
ISSUE	DATE
PERMIT	03-10-2023
REVISION	

SHEET:

S4.1