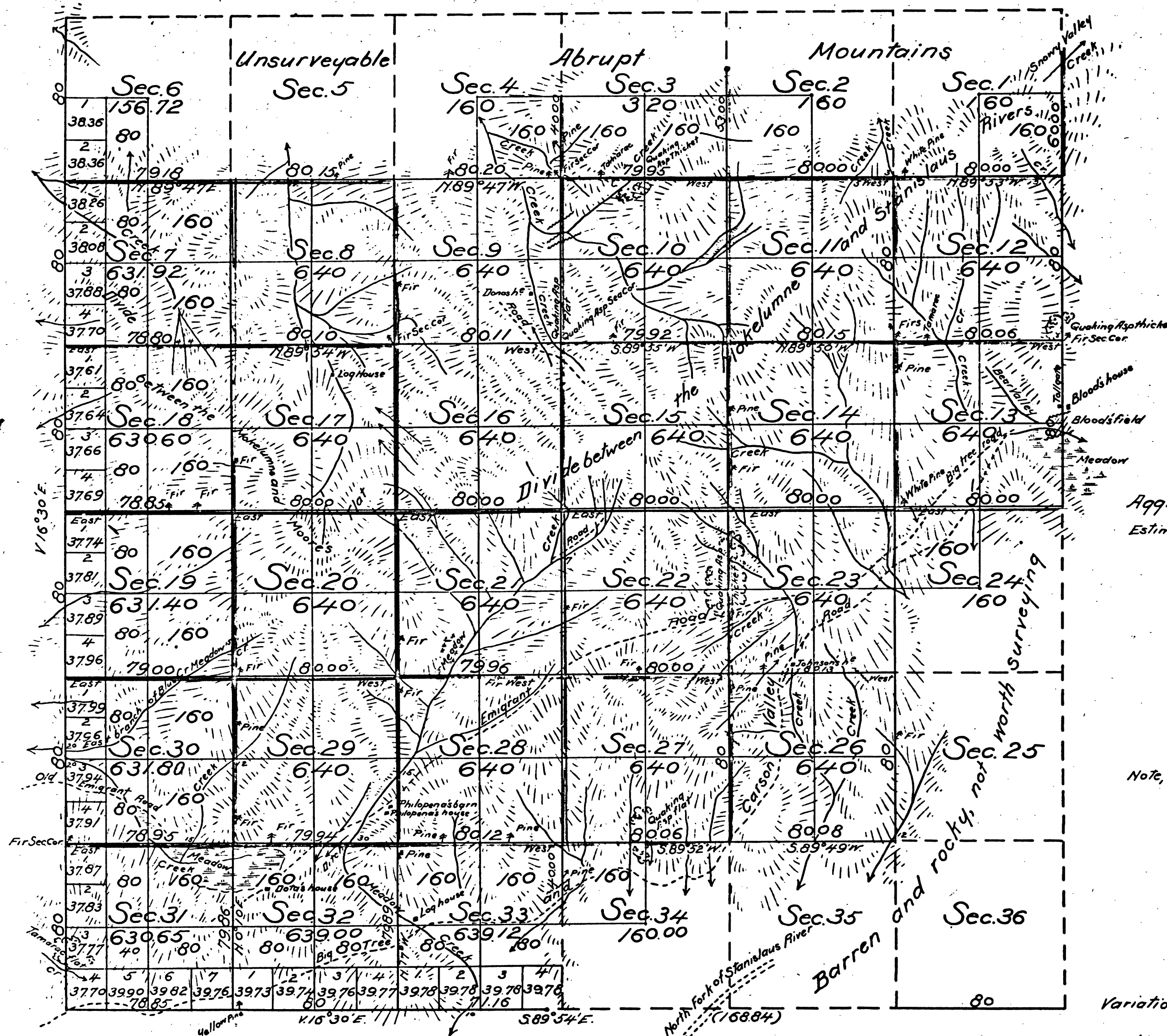


Township N^o 7 North

Range N^o 17 East

Mount Diablo Meridian.



Aggregate Area of Public Land surveyed 17,231.21 acres
 Estimated Area of unsurveyed Mountain land 5808.79
 Aggregate 23040.00

Note. Lines colored red are represented by Anderson as passing over mountainous land heavily timbered.

DEPARTMENT OF THE INTERIOR,
 GENERAL LAND OFFICE,
 Washington, D. C. Sept. 25, 1902.
 I hereby certify that this is a true copy
 of the plat of official survey of the lands
 to which it relates, on file in this office.

W. H. Anderson
 Recorder, General Land Office.

Variation 16° 30' E.

The above map of Township N^o 7 North, Range N^o 17 East, Mount Diablo Meridian is strictly conformable to the field notes of the surveys thereof on file in this Office, which have been examined and approved.
 Surveyor General's Office,
 San Francisco California,
 January 25th 1879

Philo Wagner
 Surv. Gen. Cal.

Surveys Designated	By Whom Surveyed	Date of Contract	Amount of Surveys	When Surveyed
South boundary of Township	J. A. Benson and J. A. Glover	July 15 th 1874		1874
West boundary of Township	J. M. Anderson	January 3 rd 1875		1875
East boundary of Township not colored	" "	July 23 rd 1878	2 mls. 00 chs. 00 ft.	1878
colored red	" "	" "	0 . 60 . 00 .	"
Section lines colored red	" "	" "	43 . 28 . 22 .	"
not colored	" "	" "	8 . 20 . 24 .	September 24 th 1878

41 613