

CORNER RECORD

BK

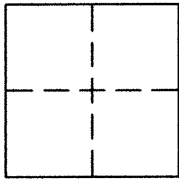
72

PG

51

Document Number CR 7569City of OAKLAND and County of ALAMEDA, California

Brief Legal Description: LOTS 1 AND 2, BLOCK 10, MAP ENTITLED "MAP OF THE ALLENDALE TRACT", FILED
APRIL 1892, IN BOOK 13 OF MAPS AT PAGE 37, ALAMEDA COUNTY OFFICIAL RECORDS..

**CORNER TYPE**Government Corner ☐Meander ☐Rancho ☐Control ☐Property ☒Other ☐Date of Survey 7/23/2015**COORDINATES (Optional)**

N: _____

E: _____

Zone: _____ NAD 27 ☐ NAD 83 ☐

Elev: _____

Vert. Datum: NGVD29 ☐ NAVD88 ☐Meas. Units: Metric ☐ Imperial ☒

CORNER – ☐ LEFT AS FOUND ☐ FOUND AND TAGGED ☒ ESTABLISHED ☐ REESTABLISHED ☐ REBUILT

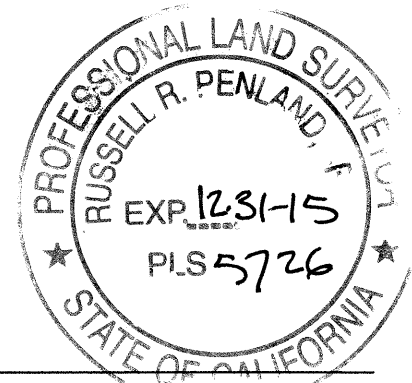
Identification and type of corner found: Evidence used to identify or procedure used to establish or reestablish the corner:

FOUND MONUMENTS PER R2 AS SHOWN ON PAGE 2.

A description of the physical condition of the monument as found and as set or reset: _____

FOUND MONUMENTS AND SET POINTS AS SHOWN ON PAGE 2.**SURVEYOR'S STATEMENT:**

The corner record was prepared by me or under my direction in conformance with

the Land Surveyors' Act on AUGUST 24, 2015Signed: Serena L. Goodwin L.S.# 8708**COUNTY SURVEYOR'S STATEMENT:**The corner record was received 8-31-15and examined and filed 9-11-15Signed: Russell R. Penland R.C.E. or L.S. No. 5726Title: County Surveyor**COUNTY SURVEYOR'S COMMENT:** _____

LEGEND

- SUBJECT BOUNDARY LINES PER R1
- ADJOINER BOUNDARY LINES PER R1
- MONUMENT LINE PER R2
- ⊙ FOUND 1/4" BRASS PIN IN CONC. IN WELL MONUMENT PER R2
- SET NAIL & BRASS TAG LS 8708 IN SIDEWALK
- SET NAIL & BRASS TAG LS 8708 IN TOP OF WOOD FENCE RAIL
- R1 RECORD MAP: BOOK 13, PAGE 37
- R2 OAKLAND MONUMENT MAP NO. 154
- CONC. CONCRETE

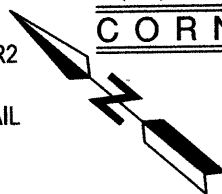
AMERICAN LAND SURVEYING, INC.

1390 Market St, #303, San Francisco, Ca 94102

P:(415) 888-8580 ASL15027 E:office@alspls.com

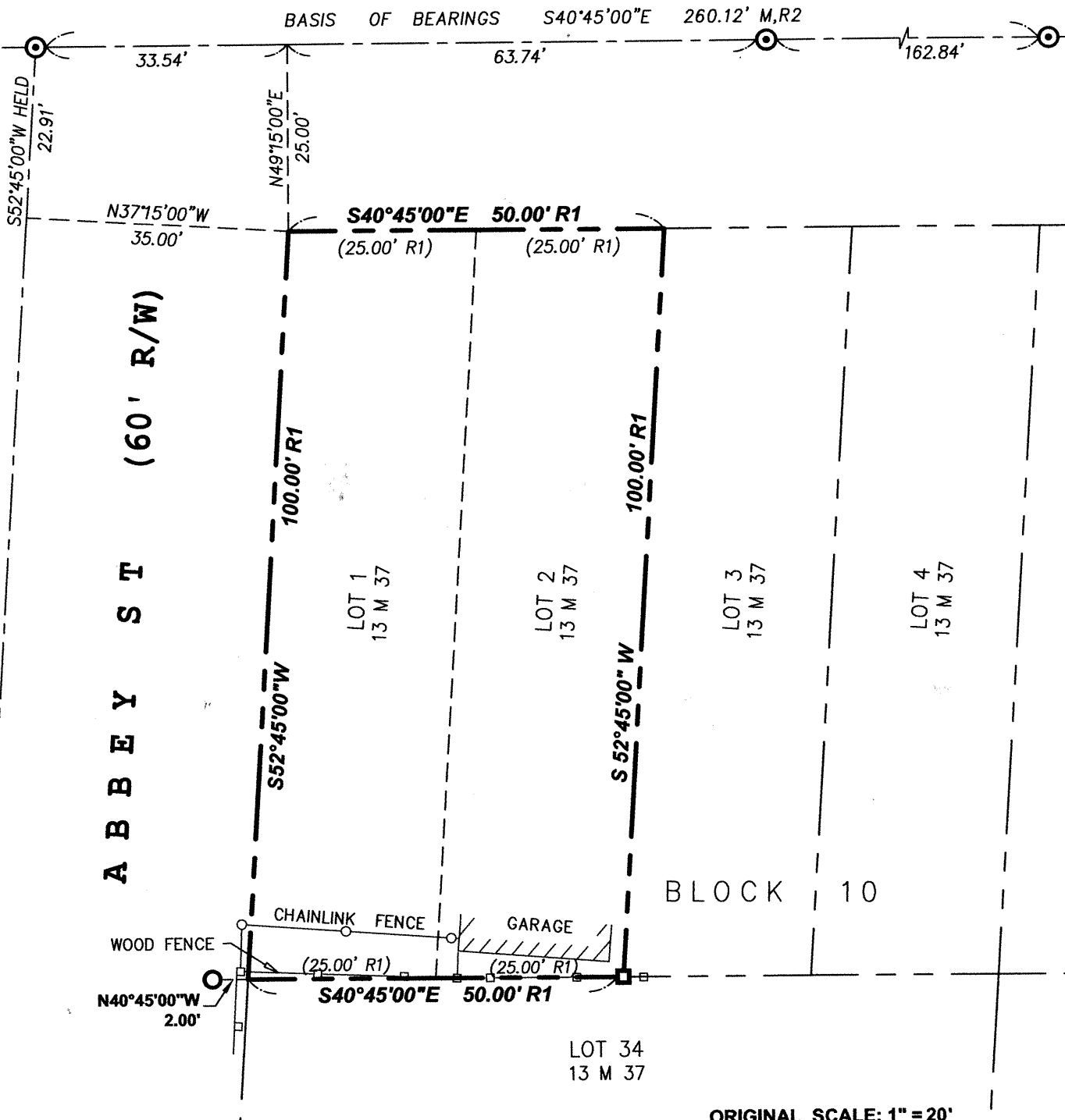
CORNER RECORD

APN: 032-2066-001



ALLENDALE AVE (60' R/W)

BASIS OF BEARINGS S40°45'00"E 260.12' M,R2



ORIGINAL SCALE: 1" = 20'

