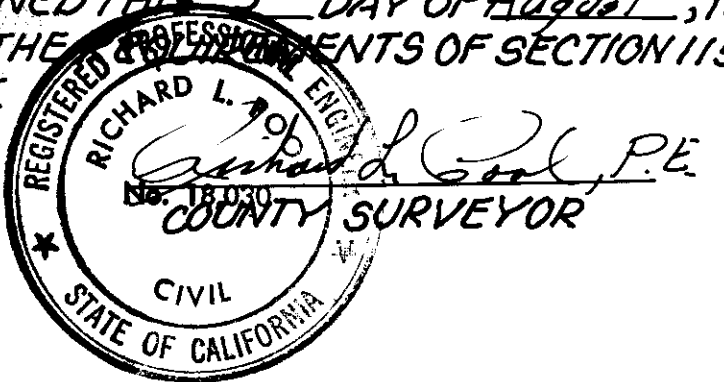


PARCEL MAP

IN THE COUNTY OF MONO, STATE OF CALIFORNIA, BEING A DIVISION OF LOT 51 OF SIERRA VALLEY SITES NO. 2 AS RECORDED BOOK 1, PAGE 2 A OF ASSESSMENT MAPS.

BASIS OF BEARINGS FOR THIS MAP IS BOOK 1, PAGE 2 A OF ASSESSMENT MAPS.

COUNTY SURVEYOR'S CERTIFICATE:  
THIS MAP HAS BEEN EXAMINED THIS 9<sup>th</sup> DAY OF August, 1971 FOR CONFORMANCE WITH THE REQUIREMENTS OF SECTION 11575 OF THE SUBDIVISION MAP ACT.



ENGINEER'S CERTIFICATE:  
THIS MAP WAS PREPARED UNDER MY DIRECTION AND WAS COMPILED FROM RECORD DATA IN CONFORMANCE WITH THE REQUIREMENTS OF THE SUBDIVISION MAP ACT AT THE REQUEST OF EDGAR ALLAN DARBY, IN JULY OF 1971, I HEREBY CERTIFY THAT IT CONFORMS TO THE APPROVED TENTATIVE MAP AND THE CONDITIONS OF APPROVAL THEREOF; THAT ALL PROVISIONS OF APPLICABLE STATE LAW AND LOCAL ORDINANCES HAVE BEEN COMPLIED WITH.

*A.W. Livett*  
A.W. LIVETT, R.C.E. 7808

DIRECTOR OF PLANNING CERTIFICATE:  
THE PLANNING COMMISSION OF THE COUNTY OF MONO, STATE OF CALIFORNIA, DID ON THIS 27 DAY OF July, 1971, ACKNOWLEDGE THAT THIS MAP IS IN ACCORD WITH THE FILED AND APPROVED TENTATIVE PARCEL MAP.

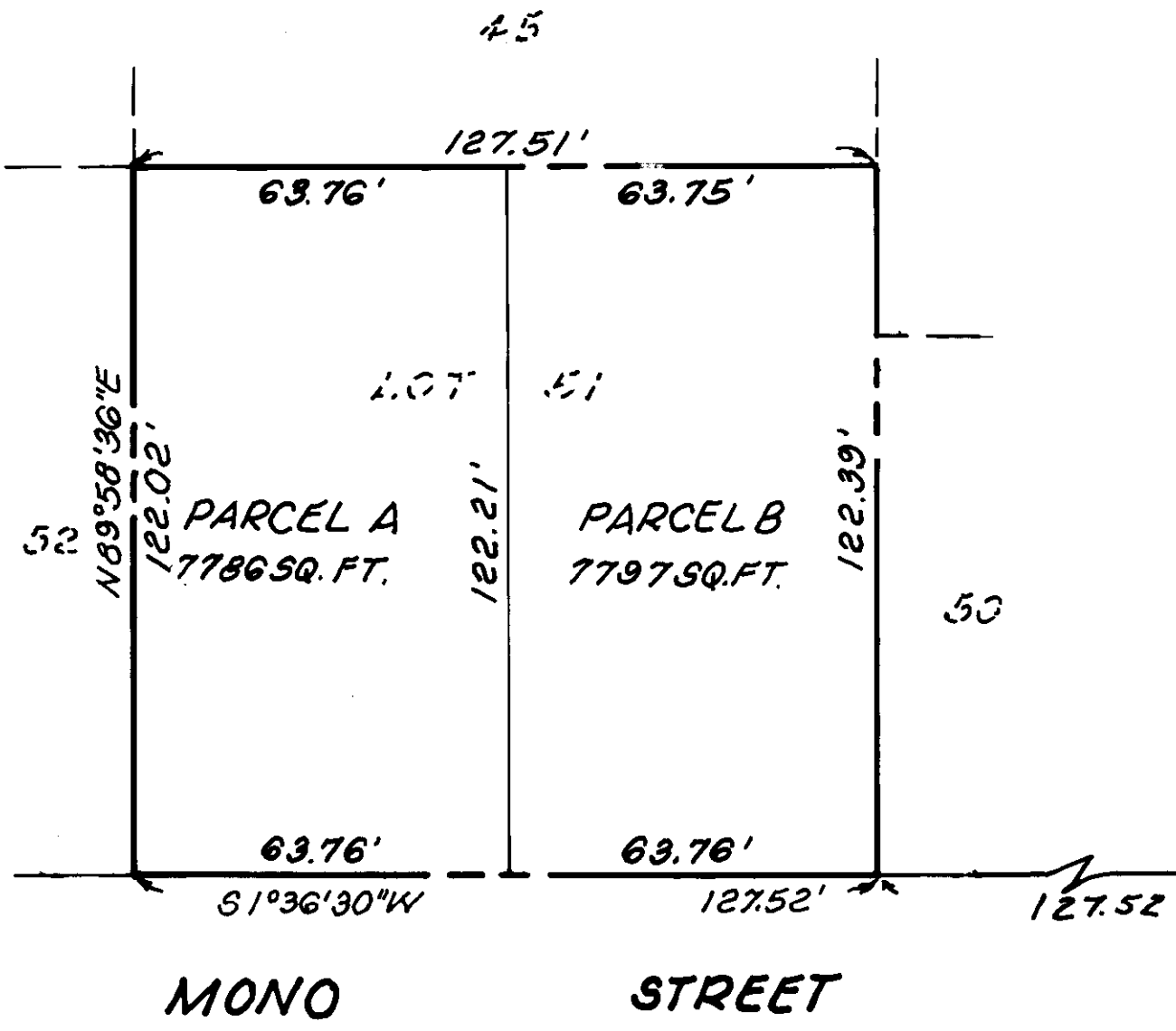
*Robert M. Lindley*  
DIRECTOR OF PLANNING

FILE NO. 703  
FILED THIS 2<sup>nd</sup> DAY OF August, 1971 AT 10:15 O'CLOCK A.M. IN BOOK OF PARCEL MAPS AT PAGE 43 AT THE REQUEST OF A.W. LIVETT.

*James M. Webb*  
COUNTY RECORDER

BY: \_\_\_\_\_  
DEPUTY

SCALE: 1" = 30'



North line Assessment District per Sub Page 2 A Assessment Maps

Vol. 7 - page 43