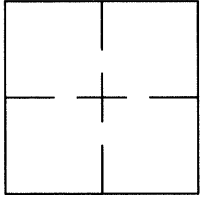


**CORNER RECORD**Document Number CR 7396City of OAKLANDCounty of ALAMEDA, CaliforniaBrief Legal Description WELL MONUMENT LOCATED WITHIN THE INTERSECTION OF LOWELL STREET AND GRACE AVENUE.**CORNER RECORD**

Government Corner ☐ Control ☒  
 Meander ☐ Property ☐  
 Rancho ☐ Other ☐  
 Date of Survey 6/8/2015

**COORDINATES**  
(Optional)

N. \_\_\_\_\_  
 E. \_\_\_\_\_  
 Zone \_\_\_\_\_ Datum \_\_\_\_\_  
 Elev. \_\_\_\_\_

**Corner** — Left as found ☒ Found and tagged ☐ Established ☐ Reestablished ☐ Rebuilt ☐

Identification and type of corner found: Evidence used to identify or procedure used to establish or reestablish the corner:  
FOUND PIN IN WELL MONUMENT. SEE CR6895

AS SHOWN ON CITY OF OAKLAND MONUMENT MAP, PAGE 308.

NO CITY MONUMENT DESIGNATION NUMBER AT SUBJECT LOCATION

THIS POINT WAS REFERENCED PRIOR TO A CONSTRUCTION PROJECT IN THE VICINITY.

A description of the physical condition of the monument as found and as set or reset: \_\_\_\_\_

FOUND AND SET POINTS AS SHOWN ON PAGE 2.

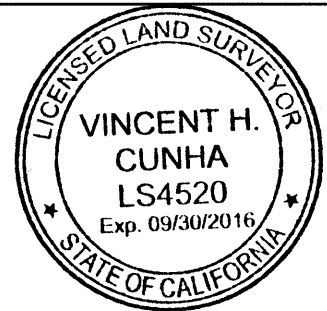
THESE TIES ARE FOR THE PURPOSE OF PERPETUATING THE FOUND MONUMENTATION.

NO CLAIM IS MADE AS TO THE RELATIONSHIP OF THE POINTS OR LINES SHOWN HEREON TO TRUE BOUNDARY LOCATIONS.

**SURVEYOR'S STATEMENT**

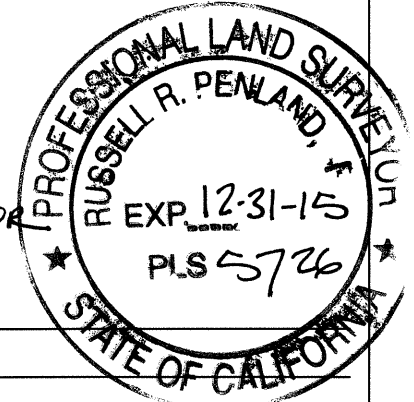
This Corner Record was prepared by me or under my direction in conformance with the Land Surveyors' Act on JUNE 10, 20 15.

Signed Vincent H. Cunha L.S. Number LS 4520  
VINCENT H. CUNHA

**COUNTY SURVEYOR'S STATEMENT**

This Corner Record was received 6-18-2015 and examined and filed 7-22-2015

Signed Russell R. Penland Title COUNTY SURVEYOR



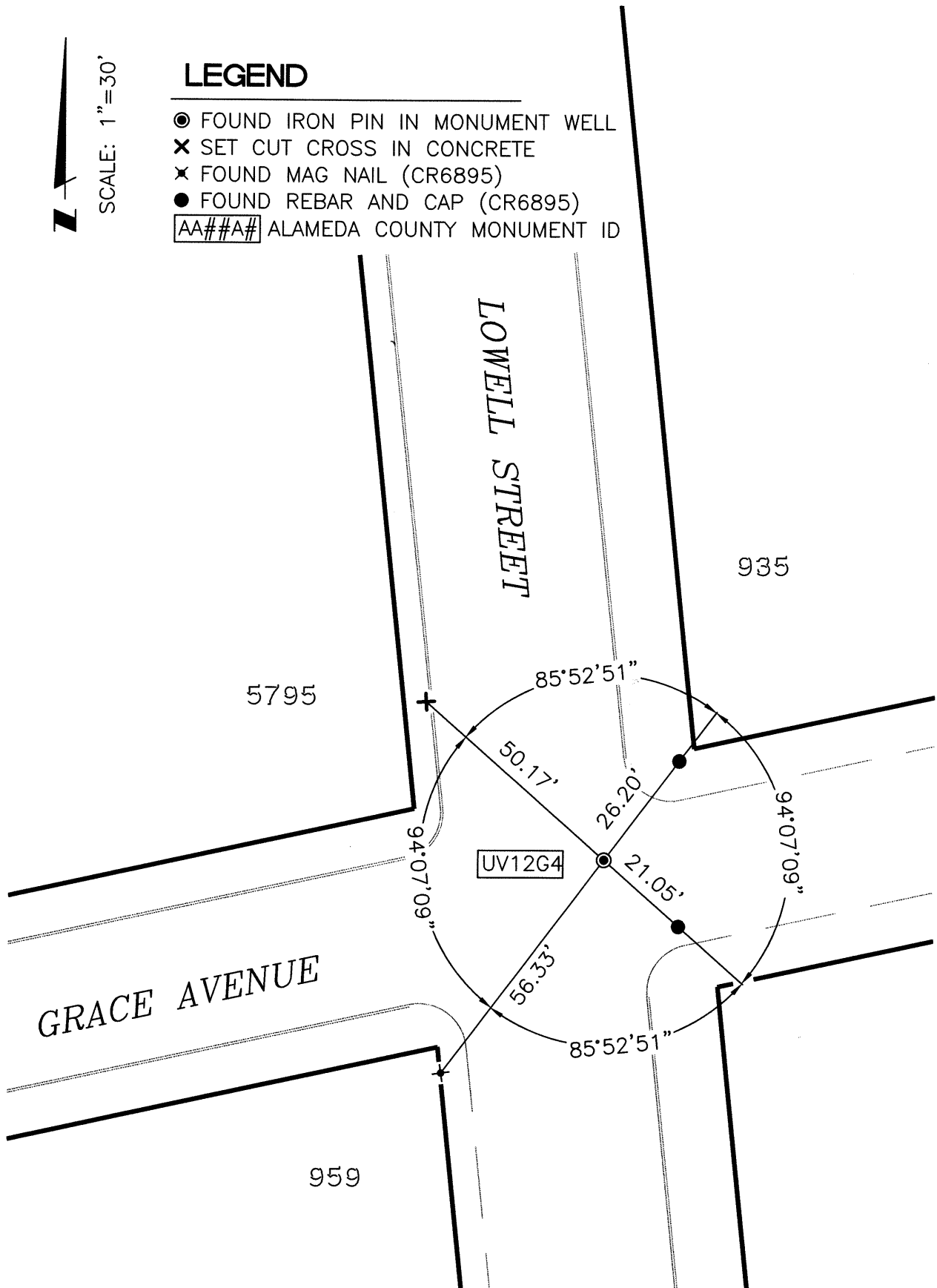
**County Surveyor's Comment** \_\_\_\_\_



SCALE: 1"=30'

## LEGEND

- FOUND IRON PIN IN MONUMENT WELL
- ✕ SET CUT CROSS IN CONCRETE
- ✕ FOUND MAG NAIL (CR6895)
- FOUND REBAR AND CAP (CR6895)
- AA###A# ALAMEDA COUNTY MONUMENT ID



214127-Lowell-CR1(2)