

ESTABLISHMENT NOTES

ESTABLISH BLM SECTIONS

SECTION 7
NORTH LINE: ESTABLISHED BY THE FOUND MOS AT NW SECTION CORNER, QUARTER CORNER, & NE SECTION CORNER.
WEST LINE: ESTABLISHED BY HOLDING FOUND MOS NW SECTION CORNER & SINGLE PROPORTIONED SW SECTION CORNER.
SOUTH LINE: ESTABLISHED BY HOLDING SINGLE PROPORTIONED SW SECTION CORNER & FOUND MOS SE SECTION CORNER.
EAST LINE: ESTABLISHED BY HOLDING FOUND MOS AT NE & SE SECTION CORNERS.

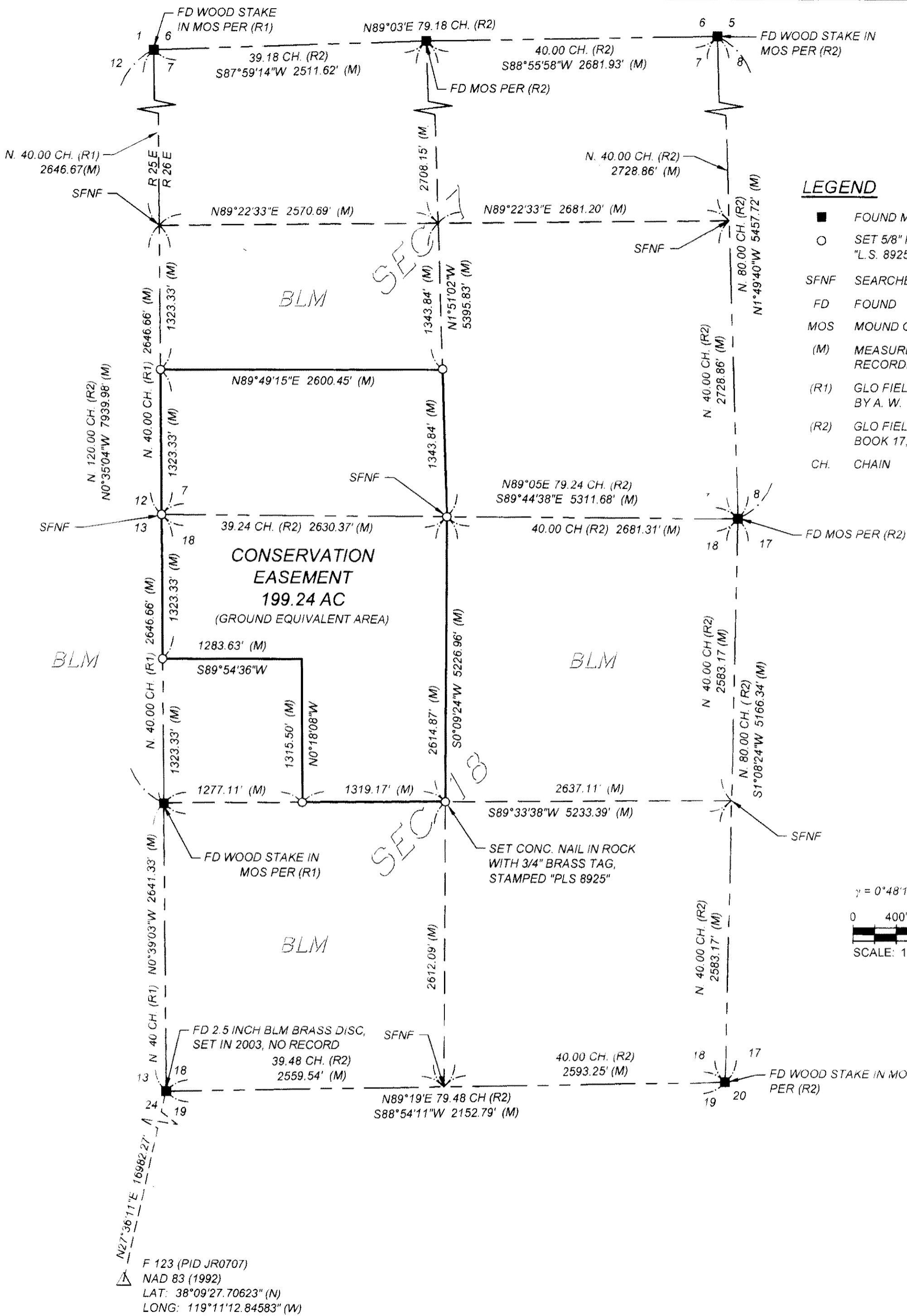
SECTION 18
NORTH LINE: SAME AS SOUTH LINE OF SECTION 7.
WEST LINE: ESTABLISHED BY HOLDING FOUND BLM BC SW SECTION CORNER & SINGLE PROPORTIONED NW CORNER.
SOUTH LINE: ESTABLISHED BY HOLDING FOUND BLM BC SW SECTION CORNER & FOUND WOOD POST IN MOUND SE SECTION CORNER.
EAST LINE: HELD FOUND WOOD POST IN MOUND SE SECTION CORNER & FOUND MOS NE SECTION CORNER.

ESTABLISH BIG ALKALI EASEMENT BOUNDARY

SECTION 7
NORTH LINE: ESTABLISHED BY HOLDING THE MIDPOINT BETWEEN THE W QUARTER CORNER & THE PROPORTIONED SW SECTION CORNER, & THE MIDPOINT OF THE E QUARTER CORNER & THE FOUND SE SECTION CORNER TO ESTABLISH SLY 1/16 LINE OF SECTION 7.
WEST LINE: ESTABLISHED BY HOLDING THE FOUND N QUARTER CORNER & THE MIDPOINT OF THE FOUND SE SECTION CORNER & THE PROPORTIONED SW SECTION CORNER.
EAST LINE: ESTABLISHED BY HOLDING THE FOUND NLY 1/4 CORNER OF SEC 7 & THE PROPORTIONED SLY 1/4 CORNER OF SEC 7.

SECTION 18
EAST LINE: ESTABLISHED BETWEEN THE PROPORTIONED 1/4 CORNERS COMMON TO 7/18 & 18/19.
WEST LINE: ESTABLISHED BETWEEN THE PROPORTIONED NW SEC COR OF 18 & THE FOUND WLY 1/4 CORNER OF 18.
SOUTH LINE: ESTABLISHED BY HOLDING THE FOUND W QUARTER CORNER & INTERSECTION OF THE 1/4 LINES OF SECTION 18.
EAST LINE OF THE ALIQUOT PORTION: SW QUARTER OF THE NW QUARTER OF SECTION 18:
ESTABLISHED BY PROPORTIONING THE 1/16 QUARTERS ON THE WESTERLY EDGE OF THE SECTION PER BLM FIELD NOTES ALONG THE SOUTHERLY & NORTHERLY BORDERS OF THE SECTION, & HOLDING THE FOUND PROPORTIONED SIXTEENTHS.
SOUTH LINE OF THE ALIQUOT PORTION: NW QUARTER OF THE NW QUARTER OF SECTION 18:
ESTABLISHED BY HOLDING THE MIDPOINT OF THE PROPORTIONED NW SECTION CORNER & THE FOUND W QUARTER CORNER, & THE MIDPOINT OF THE FOUND NE SECTION CORNER & THE E QUARTER CORNER.

THE ALIQUOT PARTS THAT MAKE UP THE BIG ALKALI EASEMENT, WHICH WERE ESTABLISHED BY THE SAID LINES, ARE AS FOLLOWS:
THE SW & SE OF THE SW QUARTER OF SECTION 7.
THE NW, NE & SE OF THE NW QUARTER OF SECTION 18.



LEGEND

- FOUND MONUMENT AS NOTED
- SET 5/8" REBAR & 1-1/2" ALUMINUM CAP, STAMPED "L.S. 8925", UNLESS OTHERWISE NOTED
- SFNF SEARCHED FOR, NOT FOUND, NOTHING SET
- FD FOUND
- MOS MOUND OF STONE
- (M) MEASURED (GRID DISTANCE - SEE B.O.B.) AND RECORDED PER DOC. NO. 2014000870
- (R1) GLO FIELD NOTES, VOLUME 254, BOOK 1, BY A. W. VON SCHMIDT
- (R2) GLO FIELD NOTES, VOLUME 110, BOOK 17, BY L. D. BOND
- CH. CHAIN

SURVEYOR'S STATEMENT

THIS MAP CORRECTLY REPRESENTS A SURVEY MADE BY ME OR UNDER MY DIRECTION IN CONFORMANCE WITH THE REQUIREMENTS OF THE PROFESSIONAL LAND SURVEYOR'S ACT AT THE REQUEST OF THE NATURAL RESOURCES CONSERVATION SERVICES IN OCTOBER AND NOVEMBER, 2012.

DANIEL C. HELT L.S. 8925 DATE 4/21/2014
DANIEL C. HELT L.S. 8925 DATE 4/21/2014
DANIEL C. HELT L.S. 8925 DATE 4/21/2014

COUNTY SURVEYOR'S STATEMENT

THIS MAP HAS BEEN EXAMINED IN ACCORDANCE WITH SECTION 8766 OF THE PROFESSIONAL LAND SURVEYORS' ACT THIS 23RD DAY OF APRIL, 2014.

BRETT K. JEFFERSON L.S. 6267
BRETT K. JEFFERSON L.S. 6267
BRETT K. JEFFERSON L.S. 6267

RECORDER'S STATEMENT

FILED THIS 5TH DAY OF MAY, 2014
AT 10:37A.M. IN BOOK 5 OF RECORD OF SURVEYS
AT PAGE 30, AT THE REQUEST OF NATIONAL RESOURCES CONSERVATION SERVICES.
FEE: \$8.00 INSTRUMENT NO. 2014001567

RUTH HANSEN
LYNDA ROBERTS RUTH HANSEN
COUNTY RECORDER DEPUTY COUNTY RECORDER

REASON FOR FILING

THE REASON FOR THIS RECORD OF SURVEY IS AS SET FORTH IN THE PROFESSIONAL LAND SURVEYORS ACT, ARTICLE 5, 8762 (b1): MATERIAL EVIDENCE OR PHYSICAL CHANGE, WHICH IN WHOLE OR IN PART DOES NOT APPEAR ON ANY SUBDIVISION MAP, OFFICIAL MAP, OR RECORD OF SURVEY PREVIOUSLY RECORDED OR PROPERLY FILED IN THE OFFICE OF THE COUNTY RECORDER OR COUNTY SURVEYING DEPARTMENT, OR MAP OR SURVEY RECORD MAINTAINED BY THE BUREAU OF LAND MANAGEMENT OF THE UNITED STATES.

BASIS OF BEARINGS

BEARING AND DISTANCES ARE BASED ON THE CALIFORNIA COORDINATE SYSTEM OF 1983 (1992), ZONE 3, DEFINED LOCALLY BY A LINE BETWEEN STATION F 123 (PID JR0707) AND THE SOUTH WEST CORNER OF SECTION 18 HAVING A BEARING OF N27°36'11"E. DIVIDE DISTANCES BY 0.99961286 TO OBTAIN GROUND EQUIVALENT DISTANCES. COORDINATE VALUES SHOWN HEREON ARE CALIFORNIA GEODETIC COORDINATES OF 1983 (1992).

AREA SHOWN HEREON HAVE BEEN ADJUSTED TO GROUND DIMENSION WITH THE COMBINED FACTORS ABOVE.

RECORD OF SURVEY 32-92

WETLAND RESERVE PROGRAM EASEMENT
NO. 66-9104-2-542 PER WARRANTY EASEMENT DEED
RECORDED MARCH 11, 2014 AS DOCUMENT NO. 2014000870

BEING PORTION OF SECTIONS 7 AND 18, TOWNSHIP 4 NORTH, RANGE 26 EAST, M.D., IN THE COUNTY OF MONO, STATE OF CALIFORNIA

SURVEYED OCTOBER AND NOVEMBER 2012

TETRA TECH
www.tetrattech.com
865 Aerovista Place, Suite 230
San Luis Obispo, CA 93401
(805) 542-9052