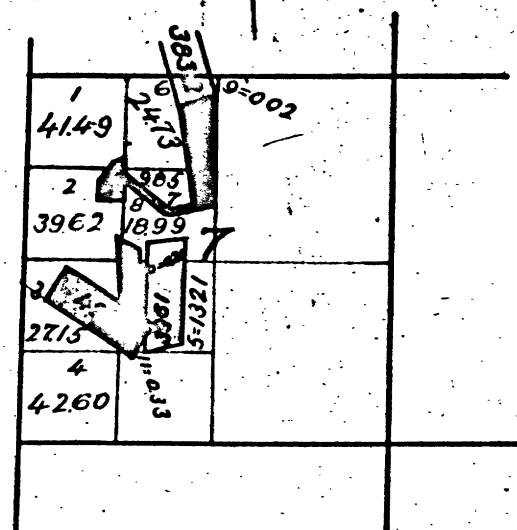


Township No. 4 North Range No. 12 East Mount Diablo Meridian.

W.L.L.
1883

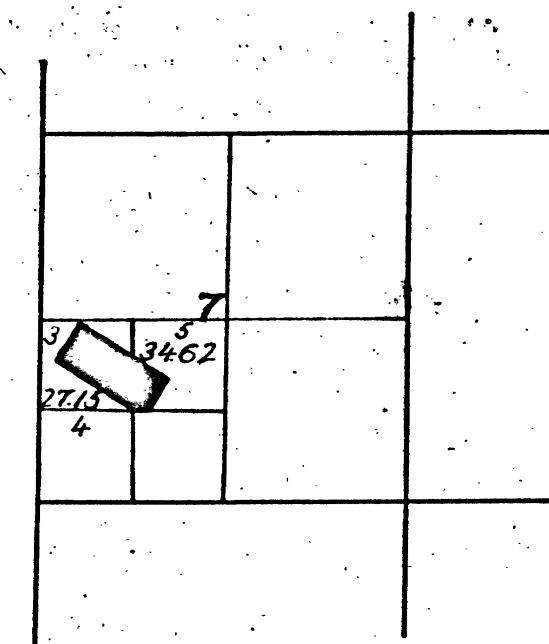


2124 42 Gottschalk Q.M. V70-3
2273 43 A. Comet Q.M. } V99-22
" 43 B Comet Mill Site }
3800 Satisfaction Q.M.
3832 Gospel " "
3961 Golden Gate " "

The above diagram of Section 7, Township No. 4 North, Range No. 12 East, Mount Diablo Meridian, California, is correctly constructed from official plats on file in this Office.

U.S. Surveyor-General's Office,
San Francisco, California.
April 4, 1903.

W. S. Graham
U.S. Surveyor General
for California.



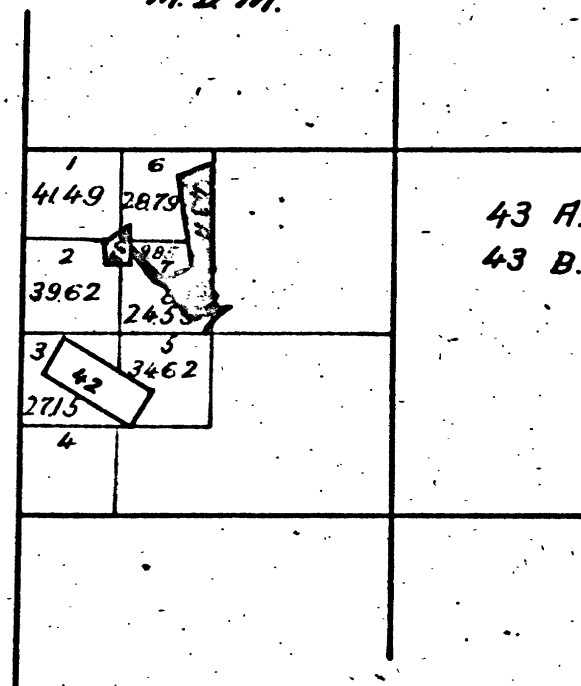
Lot No. 42. Gottschalk Quartz Mine. V70-3.

The above diagram showing amendments to Section 7, Township No. 4 North, Range No. 12 East, Mount Diablo Meridian, is correctly copied from the original map as amended and on file in this office.

U.S. Surveyor General's Office,
San Francisco California.
August 11th 1883.

W. H. Brown
U.S. Surv. Genl. Cal.

T. 4 N. R. 12 E.
M. D. M.



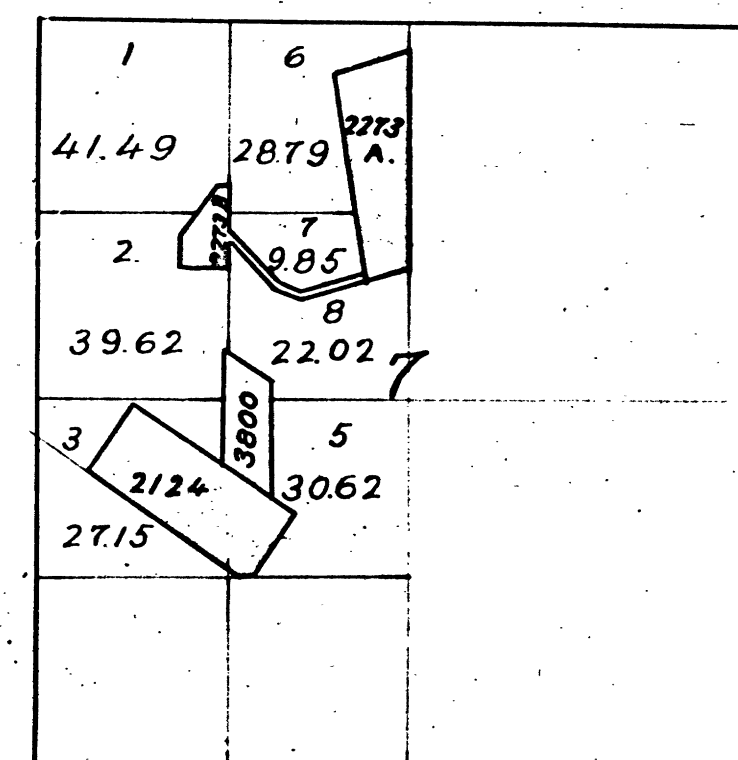
43 A. Comet Quartz Mine. } V99-22
43 B. " Mill Site. }

The above diagram showing amendments to Section 7, Township No. 4 North, Range No. 12 East, Mount Diablo Meridian, is correctly copied from the original map as amended and on file in this office.

U.S. Surveyor General's Office,
San Francisco, California.
December 3rd 1884.

W. H. Brown
U. S. Surv. Genl. Cal.

T. 4 N. - R. 12 E. - M. D. M.



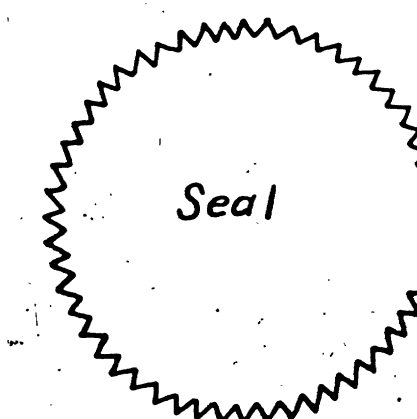
2273 A. Comet Quartz Mine.
2273 B. " " Mill Site
2124. Gottschalk " " V70-3
3800. Satisfaction " "

DEPARTMENT OF THE INTERIOR,
GENERAL LAND OFFICE,
Washington, D. C. Dec. 14, 1884.
I hereby certify that this is a true copy
of the plat of official survey of the lands
to which it relates, on file in this office.

H. L. ...
Recorder, General Land Office.

The above diagram of Sec. 7, T. 4 N. - R. 12 E. M. D. M.
is correctly copied from the original on file in this office.
U.S. Surveyor General's Office,
San Francisco California.
October 27th 1900.

J. M. Gleaves
U.S. Surv. Gen. Cal.



41 327

CHAINS

CHAINS
10 20 40 60 80 120

T 4 N R 12 E M D

BLM 167