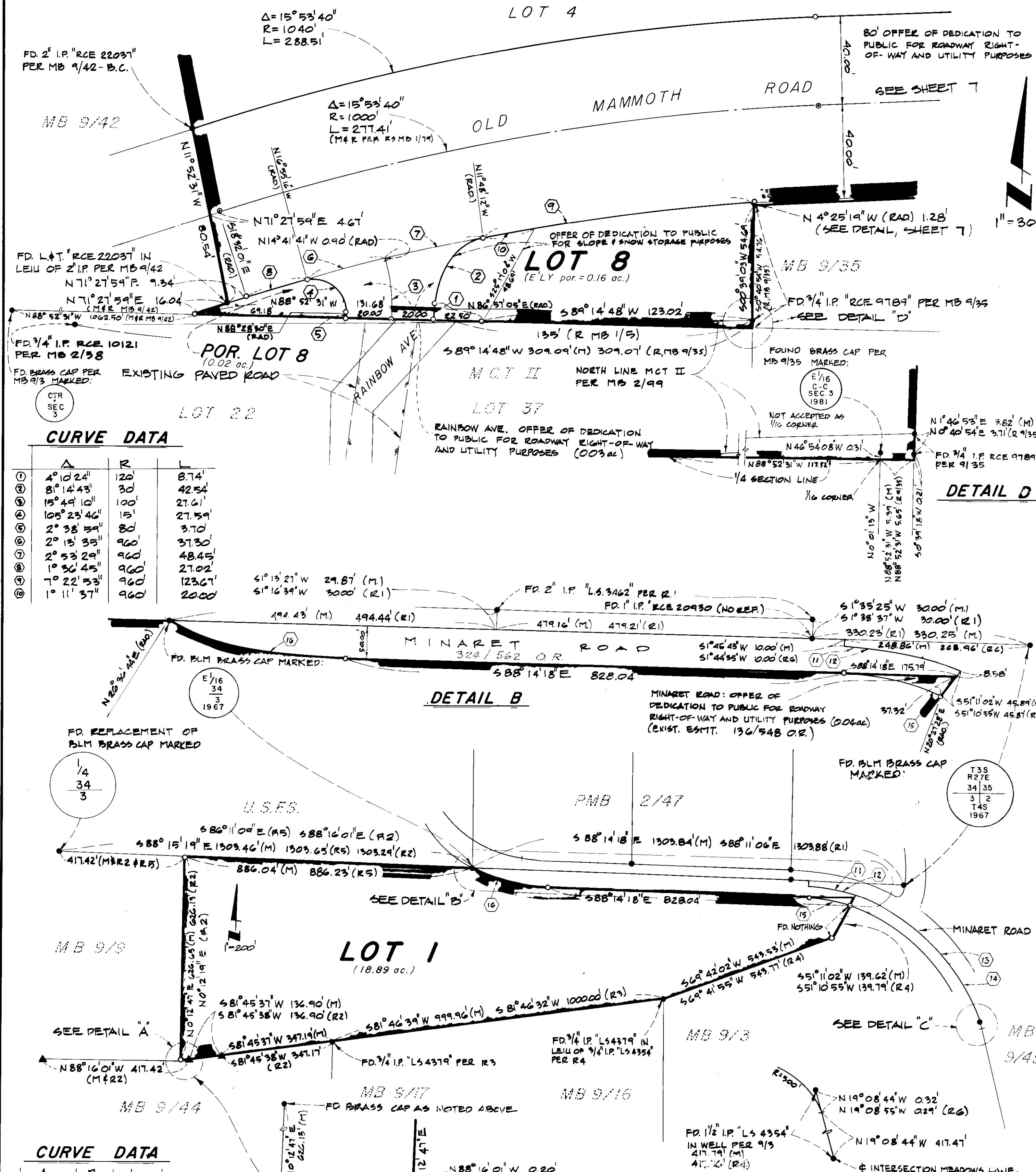


TRACT NO. 36-134

IN THE UNINCORPORATED TERRITORY OF MONO COUNTY, CALIFORNIA

BEING A RESUBDIVISION OF A PORTION OF SECTIONS 2,3,10 TOWNSHIP 4, SOUTH,
RANGE 27 EAST, M.D.B. & M. DESCRIBED IN DEED RECORDED IN BOOK 245
PAGES 83-88 OF OFFICIAL RECORDS OF SAID COUNTY.



CURVE DATA

	Δ	R	L
①	4° 10' 24"	120'	8.74'
②	8° 14' 43"	30'	42.54'
③	15° 49' 10"	100'	27.61'
④	105° 23' 46"	15'	27.59'
⑤	2° 38' 59"	80'	3.70'
⑥	2° 15' 35"	960'	37.30'
⑦	2° 53' 29"	960'	48.45'
⑧	1° 36' 45"	960'	27.02'
⑨	7° 22' 53"	960'	123.67'
⑩	1° 11' 37"	960'	20.00'

DETAIL B

MINARET ROAD: OFFER OF DEDICATION TO PUBLIC FOR ROADWAY RIGHT-OF-WAY AND UTILITY PURPOSES (0.04 ac.) (EXIST. EMT. 136/548 O.R.)

LOT 1

(18.89 ac.)

CURVE DATA

	Δ	R	L	REC. OR M.
⑪	2° 22' 0"	500'	186.46'	R4
⑫	21° 23' 03"	500'	186.61'	M
⑬	41° 42' 31"	500'	416.34'	M
⑭	47° 40' 10"	500'	416.00'	R4
⑮	1° 34' 16"	460'	150.16'	M
⑯	2° 51' 02"	540'	234.21'	M

DETAIL A

NO SCALE

LEGEND

- SET CENTERLINE MONUMENT STAMPED "LS 4587"
- SET 2" I.P. TAGGED "LS 4587" UNLESS OTHERWISE NOTED
- FOUND MONUMENT AS NOTED
- ▲ FOUND 3/4" I.P. TAGGED "RCE 9769" PER MB 9/44
- R1 RECORD INFORMATION PER PMB 2/47
- R2 " " " MB 9/44
- R3 " " " MB 9/17
- R4 " " " MB 9/3
- R5 " " " MB 9/9
- R6 " " " MB 9/45

DETAIL C

NO SCALE

Book 9 of Tract Maps of Page 56-D