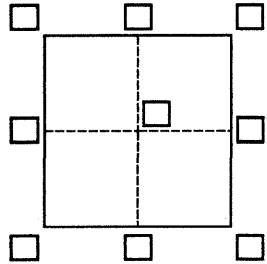


CORNER RECORD

Agency Index

Document Number

133 82 77

City of OAKLAND Alameda County of ALAMEDA, CaliforniaBrief Legal Description MONUMENT AT THE INTERSECTION OF MARIN & HAPPYLAND AVE**CORNER TYPE**Government Corner ☒ Control
Meander ☐ Property
Rancho ☐ OtherDate of Survey January 7, 2020**COORDINATES (Optional)**

N. _____ E. _____

Elevation _____

Units

Metric ☐U.S. Survey Foot ☒

Horizontal Datum _____

Zone _____ Epoch Date _____

Vertical Datum _____

☐ Complies with Public Resources Code §§8801-8819☐ Complies with Public Resources Code §§8890-8902

PLS Act Ref.:

☐ 8765(d)☒ 8771☐ 8773☐ Other:

Corner/

Monument:

☐ Left as found☐ Established☐ Rebuilt☐ Pre-Construction☐ Found and tagged☐ Reestablished☐ Referenced☒ Post-Construction

Narrative of corner identified and monument as found, set, reset, replaced, or removed:

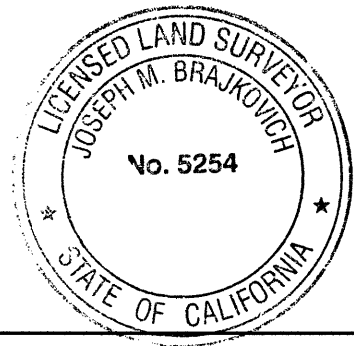
☐ See sheet #2 for description(s):**MONUMENT HAD NOT BEEN DISTURBED DURING CONSTRUCTION
SEE PRE-CONSTRUCTION CORNER RECORD CR 12124****SURVEYOR'S STATEMENT**

This Corner Record was prepared by me or under my direction in conformance with

the Professional Land Surveyors' Act on April 8, 2020

Signed

P.L.S. or R.C.E. No.

P.L.S. 5254**COUNTY SURVEYOR'S STATEMENT**

This Corner Record was received

APR 15 2020

and examined and filed

APR 15 2020

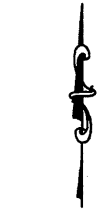
Signed

P.L.S. or R.C.E. No.

7010Title ALAMEDA COUNTY SURVEYOR

County Surveyor's Comment





SCALE
1"=20'

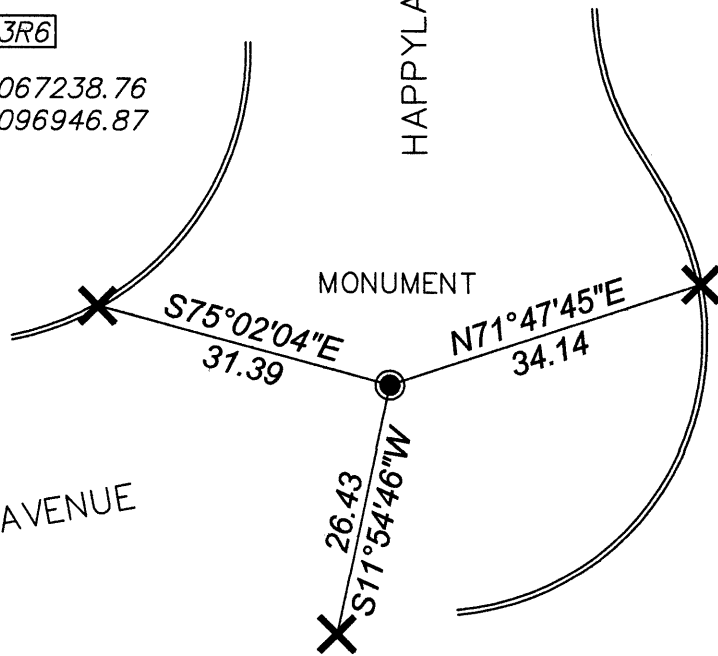
DE13R6

2067238.76
6096946.87

HAPPYLAND AVENUE

MARIN AVENUE

MONUMENT



SEE PER-CONSTRUCTION CR 12124

LEGEND



PIN IN MONUMENT WELL



CUT CROSS

AA###A#

ALAMEDA CO MON ID