

- UNLESS NOTED OTHERWISE ON PLANS, ALL EXISTING LIGHTING TO BE REMOVED AND CIRCUITS DEMOLISHED BACK TO ASSOCIATED PANELS.
- CONTRACTOR SHALL PROVIDE ALL REQUIRED HARDWARES, BRACKETS, ETC. FOR A COMPLETE LIGHTING FIXTURE INSTALLATION.
- ALL LIGHTING FIXTURES SHALL BE SUPPORTED PER N.E.C. 410-16(C). SEE DETAIL, 4/E-400.
- CONTRACTOR SHALL INSTALL ALL LIGHTING FIXTURES INCLUDING OWNER-FURNISHED FIXTURES.
- ALL FIXTURE BALLASTS SHALL BE U.L. LISTED.
- ~~E.C. SHALL INSTALL OWNER-SUPPLIED LED STRIP LIGHTING & CUT TO PROPER LENGTH & COORDINATE WITH OWNER FOR EXACT LENGTHS AND FINAL LOCATIONS.~~
- WHEN WORKING IN JURISDICTIONS WHICH HAVE ADOPTED THE 2008 NEC OR LATER, ALL MULTI-WIRE BRANCH CIRCUITS TO HAVE SEPARATE NEUTRALS TO MEET THE REQUIREMENTS OF 2008 NEC 210.4(B).
- ALL FLUORESCENT FIXTURES SHALL HAVE INTEGRAL DISCONNECTING MEANS PER 2005 NEC 410.73(G) and 2008 NEC 410.130(G)(1).
- ALL CIRCUITRY SHOWN WITHOUT TICKS SHALL HAVE (2) WIRES PLUS EQUIPMENT GROUNDING CONDUCTOR.
- 'N.L.' DESIGNATION INDICATES NIGHT LIGHT ON UNSWITCHED CIRCUIT.
- ALL EXIT SIGNS (TYPE 'L4HO') AND EXTERIOR EMERGENCY EGRESS FIXTURES (TYPE 'L86') ARE TO BE CIRCUITED AHEAD OF ANY SWITCHING OR AUTOMATIC CONTROLS.

LIGHTING GENERAL NOTES 2

NOT TO SCALE E-101

1. SWITCHBANK 'A'. REFER TO SCHEDULE 4/E-101.
2. ROUTE HOMERUN THROUGH LIGHTING SWITCHBANK 'A' (SWITCHES AS NOTED IN LOWER CASE). REFER TO SCHEDULE 4/E-101 FOR MORE INFORMATION.
3. ROUTE THROUGH CONTACTS IN HOOD CONTROL PANEL 'M4' FOR CIRCUIT POWER. REFER TO 3/E-401.
4. PROVIDE SEPARATE UNSWITCHED HOT CONDUCTOR (SAME CIRCUIT, NOT CONTROLLED BY SWITCH IN SWITCHBANK) TO LOCALLY SWITCHED FIXTURES AND EMERGENCY FIXTURE BATTERY TRIGGER LEADS.
5. ~~DUPLEX RECEPTACLE FOR LED ROPE. INSTALL ABOVE CEILING AT +120". REFER TO A-402 FOR MORE INFORMATION.~~
6. WALK-IN COOLER LIGHT FIXTURES AND PILOT LIGHT SWITCH PROVIDED WITH COOLER INSTALLED BY E.C. REFER TO 'COOLER EVAPORATOR COIL' WIRING DIAGRAM, 8/E-400.
7. WALK-IN FREEZER LIGHT FIXTURE AND PILOT LIGHT SWITCH PROVIDED WITH FREEZER INSTALLED BY E.C. REFER TO 'FREEZER LTG AND DOOR HEATER WIRING DIAGRAM', 10/E-400.
8. REFER TO 'EXHAUST FAN CONTROL DIAGRAM', 5 / E-400, FOR MORE INFORMATION.
9. FIXTURES IN THIS ROOM SHALL BE LOCALLY SWITCHED.
10. LIGHTING INVERTER FOR EMERGENCY LIGHTING TO BE MOUNTED NEXT TO CEILING. RE: 9/E-200.
11. ~~LED TRANSFORMER FOR LED ROPE LIGHTING LOCATION. MOUNT ABOVE CEILING.~~
12. ~~DUPLEX RECEPTACLE FOR LED ROPE. INSTALL BEHIND CABINET AT +90". REFER TO A-402 FOR MORE INFORMATION.~~
13. DO NOT CIRCUIT LIGHTS IN THIS ROOM THROUGH AUTOMATIC CONTROL PER NEC 110.26(D).
14. CIRCUIT LIGHTS IN THIS ROOM THROUGH CEILING MOUNTED OCCUPANCY SENSORS FOR AUTOMATIC CONTROL OF LIGHTS. PROVIDE WALL SWITCHES AS INDICATED FOR MANUAL CONTROL.

LIGHTING KEYED NOTES 3

NOT TO SCALE E-101

NOTE:
FIXTURES TO BE ROUTED VIA TIME TIMECLOCKS ARE SHOWN ON
DETAIL 11/E-400.

NOTE:
CONTRACTOR TO INSTALL (2) 5 GANG SWITCH BOXES AS SHOWN
BELOW. DO NOT INSTALL SEPARATE/INDIVIDUAL BOXES FOR EACH
SWITCH

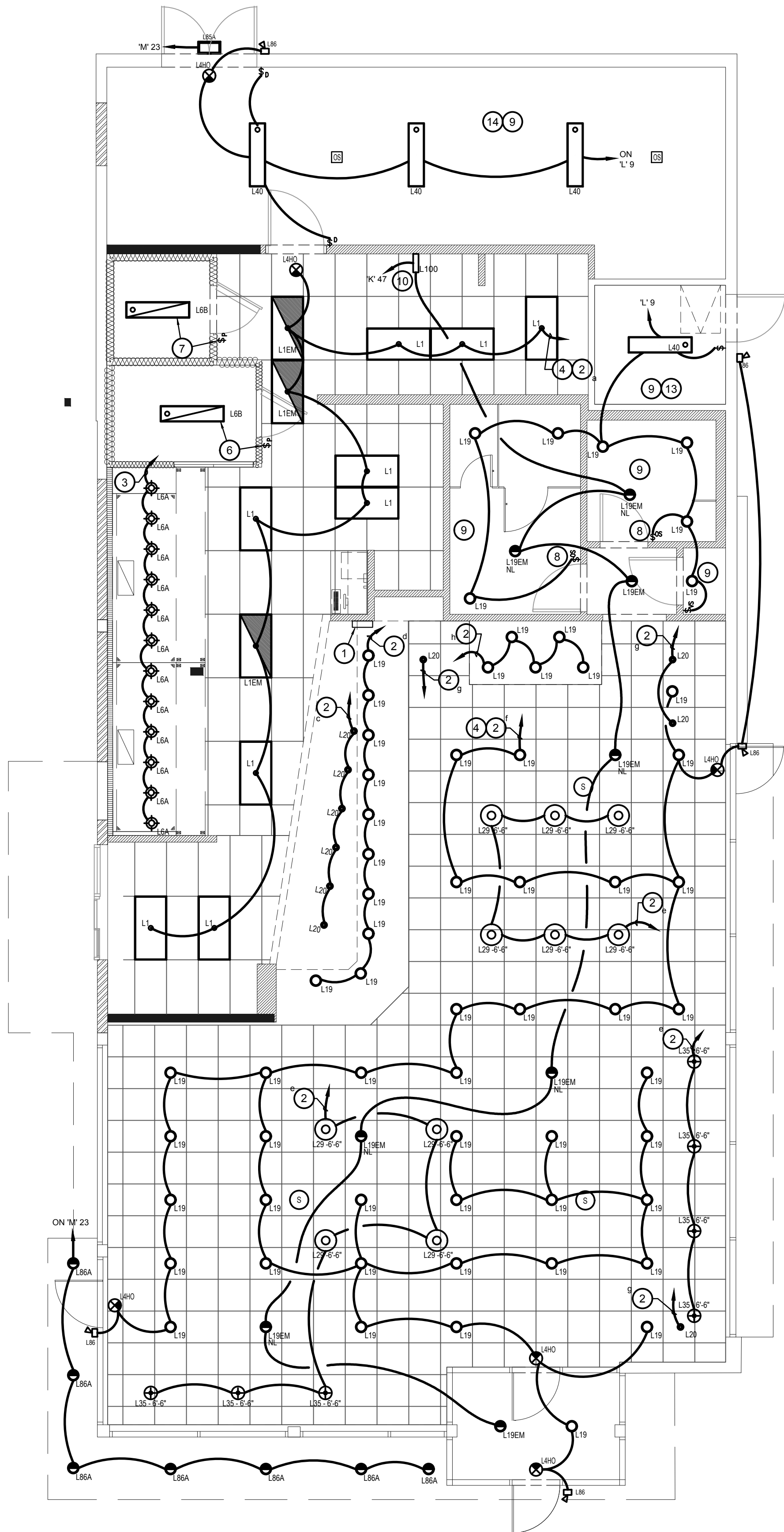
(a)	(b)	(c)	(d)	(e)
\$	\$	\$ _D	\$ _D	\$ _D
BACK OF HOUSE LTG & EX. FAN & RECIRC PUMP	SHOW WINDOW RECEPS	WALK-IN, MENU LED ACCENTS	SERVING LINE SOFFIT	DINING PENDANTS
(f)	(g)	(h)	(i)	60:00
\$ _D	\$ _D	\$ _D	\$ _D	
INTERIOR DINING	DECORATIVE LIGHTING	BEVERAGE COUNTER	SPARE	INTERIOR LIGHTING SHUT DOWN OVERRIDE

SWITCHBANK SCHEDULE 'A'

TAG	SWITCH TYPE	AREA SERVED / SWITCH LABEL	CIRCUIT	LOAD
a	TOGGLE SWITCH	BACK-OF-HOUSE / RR FANS	'K' 45	1545 VA
b	TOGGLE SWITCH	SHOW WINDOW RECEP	'K' 49	540 VA
c	DIMMING SWITCH	WALK-INS, MENU	'K' 1	136 VA
d	DIMMING SWITCH	SERVING LINE SOFFIT	'K' 45	140 VA
e	DIMMING SWITCH	DINING PENDANTS	'K' 47	123 VA
f	DIMMING SWITCH	INTERIOR DINING	'K' 47	595 VA
g	DIMMING SWITCH	DECORATIVE LIGHTING	'K' 47	24 VA
h	DIMMING SWITCH	BEVERAGE COUNTER	'K' 47	70 VA
i	SPARE			
j	OVERRIDE			

LIGHTING SWITCHBANK SCHEDULE 4

NOT TO SCALE E-101



LIGHTING FLOOR PLAN 1

Scale: 3/16"=1'-0" E-101



PANDA EXPRESS, INC.
1683 Walnut Grove Ave.
Rosemead, California
91770

Telephone: 626.799.9898
Facsimile: 626.372.8288

All ideas, designs, arrangement and plans indicated or represented by this drawing are the property of Panda Express Inc. and were created for use on this specific project. None of these ideas, designs, arrangements or plans may be used by or disclosed to any person, firm, or corporation without the written permission of Panda Express Inc.

REVISIONS:

NO.	DESCRIPTION	DATE
1	DEVELOPER REVIEW	07.15.19
2	SITE PLAN SUBMITTAL	08.26.19
3	SITE COMMENTS	09.05.19
4	ISSUE FOR PERMIT	10.01.19
5	ISSUE FOR BID	11.07.19

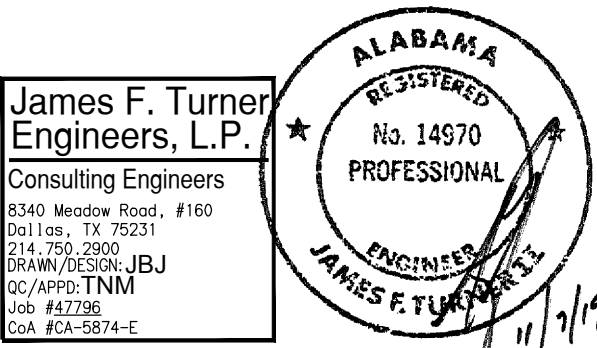
ISSUE DATE:

1st	DEVELOPER REVIEW	07.15.19
2nd	SITE PLAN SUBMITTAL	08.26.19
3rd	SITE COMMENTS	09.05.19
4th	ISSUE FOR PERMIT	10.01.19
5th	ISSUE FOR BID	11.07.19

DRAWN BY: PM / KL / EA

PANDA PROJECT #: S8-20-D7163

ARCH PROJECT #: 19027



Heights Venture ARCHITECTURE + DESIGN

HOUSTON 1111 North Loop West, Suite 800 Houston, Texas 77008 713.866.1103 V
DALLAS 5741 Legacy Drive, Suite 320 Plano, Texas 75024 972.490.7262 V

PANDA EXPRESS

2096 INTERSTATE DR.
OPELIKA, AL, 36801
3600 FSDT

TWW REMODEL

E-101

LIGHTING FLOOR PLAN

TRUE WARM & WELCOME

BID ISSUE