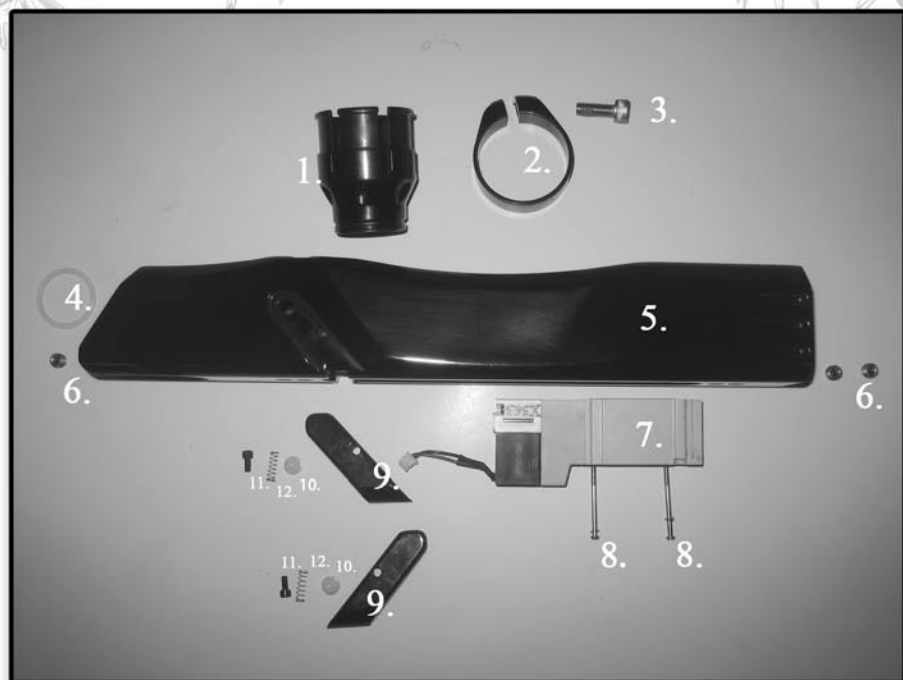




The quest

## Body/Solenoid.

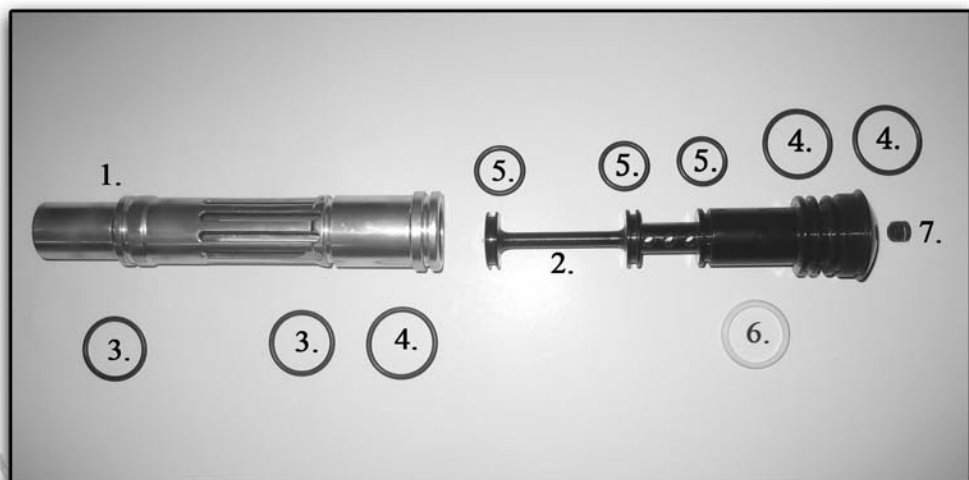


1. Feedneck.
2. Feedneck Clamp.
3. Feedneck Screw.
4. Size 017 Urethane O-Ring.
5. Quest Body.
6. Body Plugs.
7. Solenoid.
8. Solenoid Screws.
9. Eye Covers.
10. Ball Detents.
11. Eye Cover Screws.
12. Ball Detent Springs.



**The Quest**

## Ram Valve System.



1. Bolt.

2. Pin.

3. Size 017 O-Ring.

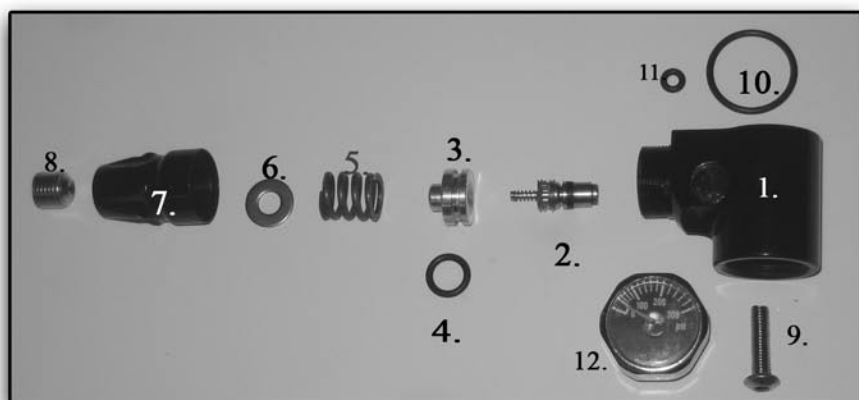
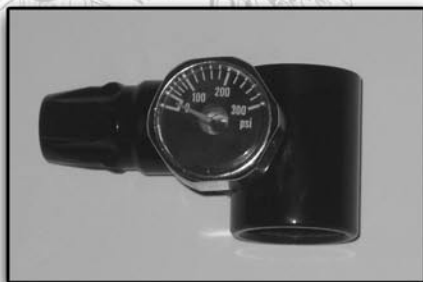
4. Size 018 O-Ring.

5. Size 014 O-Ring.

6. Bolt / Pin Washer.

7. Pin Plug.

# Low Pressure Regulator.



1. LPR Housing.
2. LPR Valve Core.
3. LPR Piston.
4. Size 011 O-Ring.
5. LPR Spring.
6. LPR Washer.
7. LPR Cap.
8. LPR Adjustment Screw.
9. LPR Mounting Screw.
10. Size 018 O-Ring.
11. Size 006 O-Ring.
12. 0-300PSI Gauge.

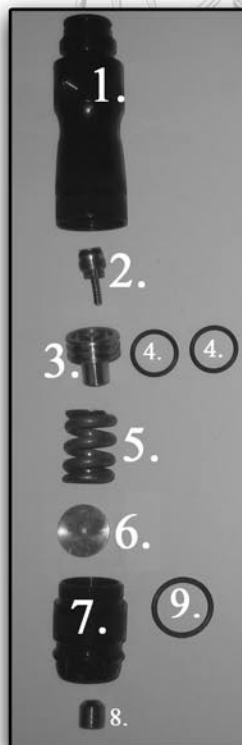


The quest

# Inline Regulator

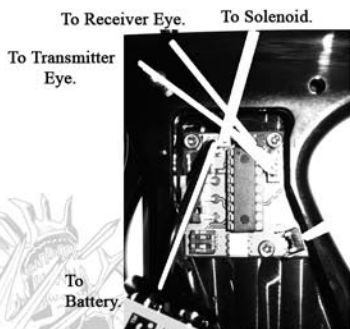
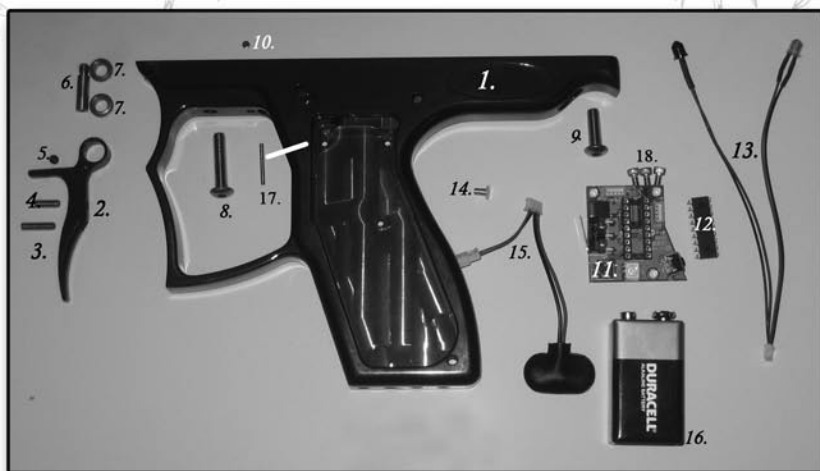


Tank O-ring



1. Regulator Body.
2. HPR Valve Core.
3. HPR Piston.
4. Size 15 O-Ring.
5. HPR Spring.
6. HPR Washer.
7. Reg Cap.
8. Reg Adjustment Screw.
9. Size 17 O-Ring.

# Frame/Board.



1. Quest Trigger Frame.
2. Quest Trigger.
3. Trigger Pull Adjust Screw.
4. Trigger Stop Adjust Screw.
5. Trigger Return Adjust Screw.
6. Trigger Screw.
7. Trigger Bearings.
8. Front Frame Screw.
9. Back Frame Screw.
10. Trigger Return Magnet.
11. Quest Board.
12. Quest Chip (Psp, Nxl, Ramping)
13. Eye Harness.
14. On/Off Button.
15. Battery/Solenoid Harness.
16. Battery.
17. Trigger Stop Pin.
18. Board Screws.