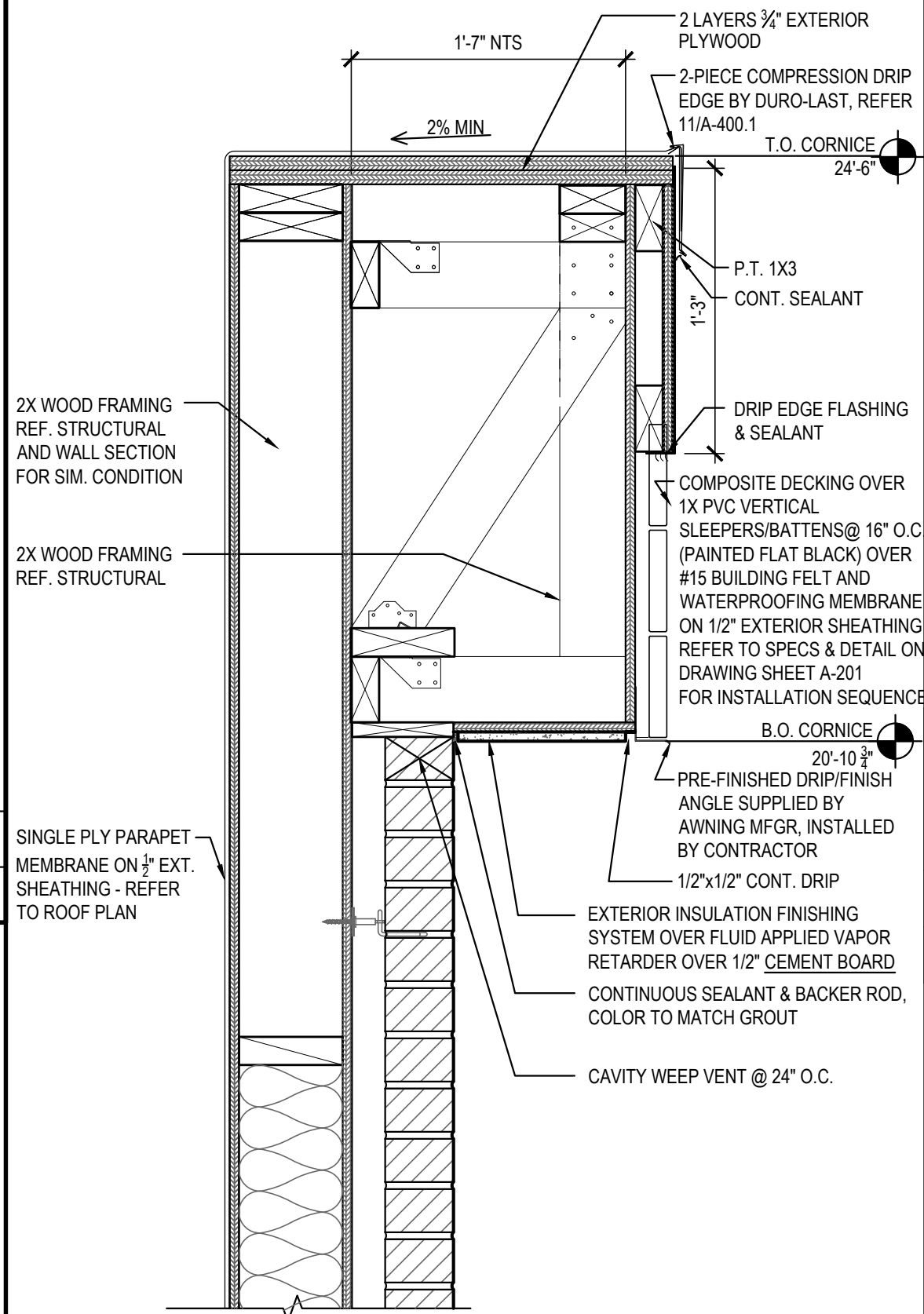
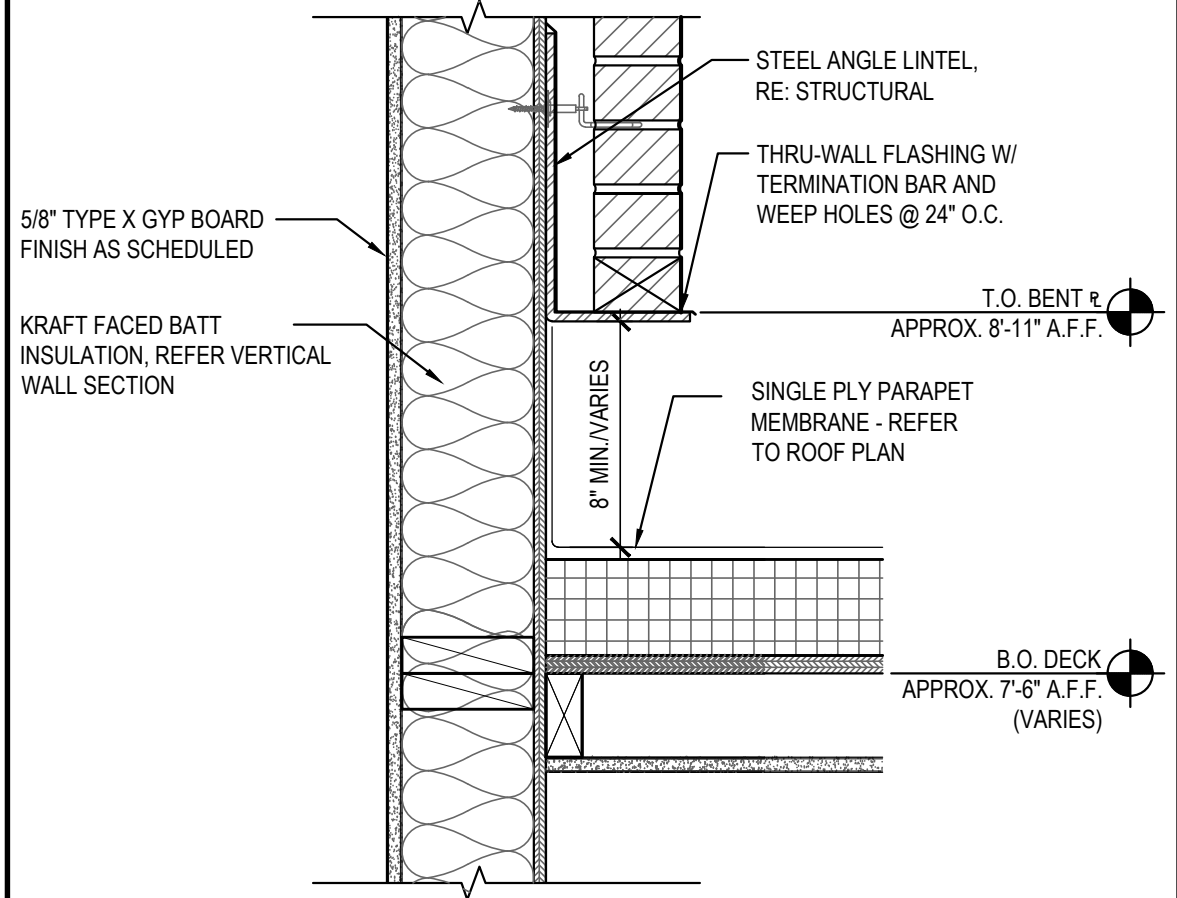


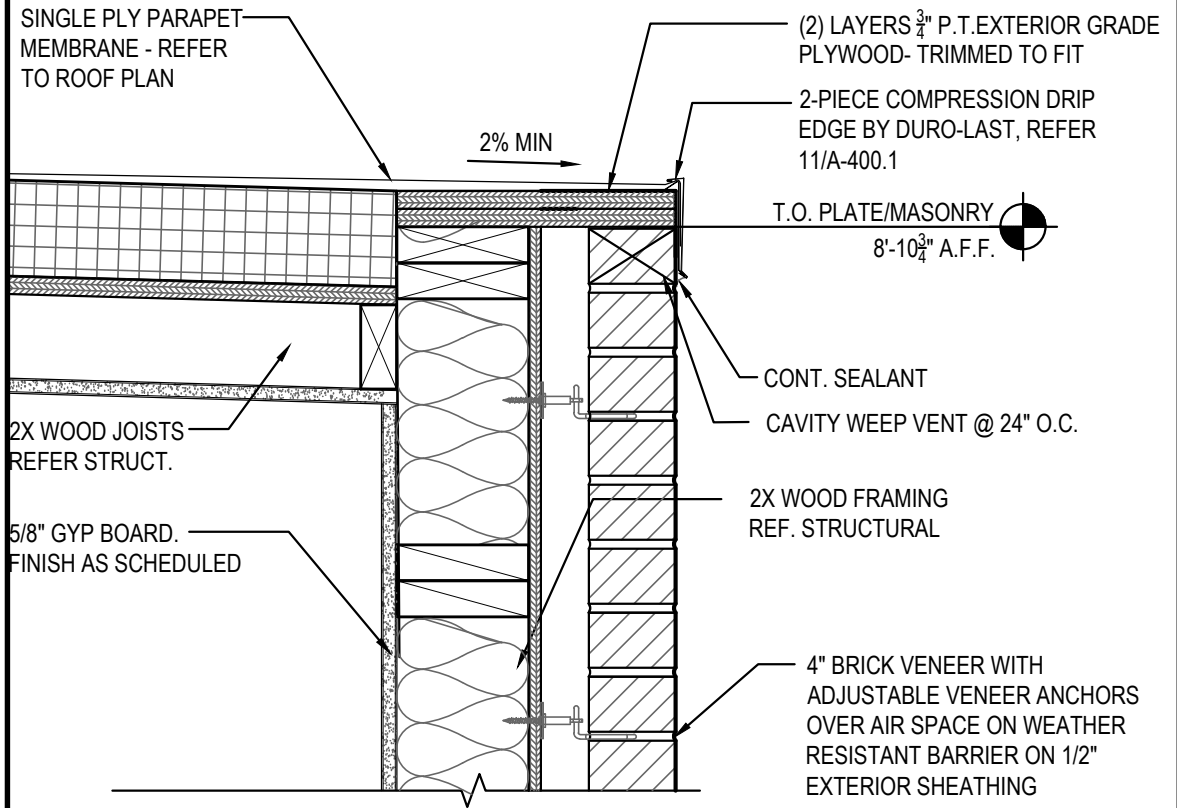
EIFS WEEP SCREEN SPEC/DETAIL	13
Scale= 1 1/2" = 1'-0"	A-400



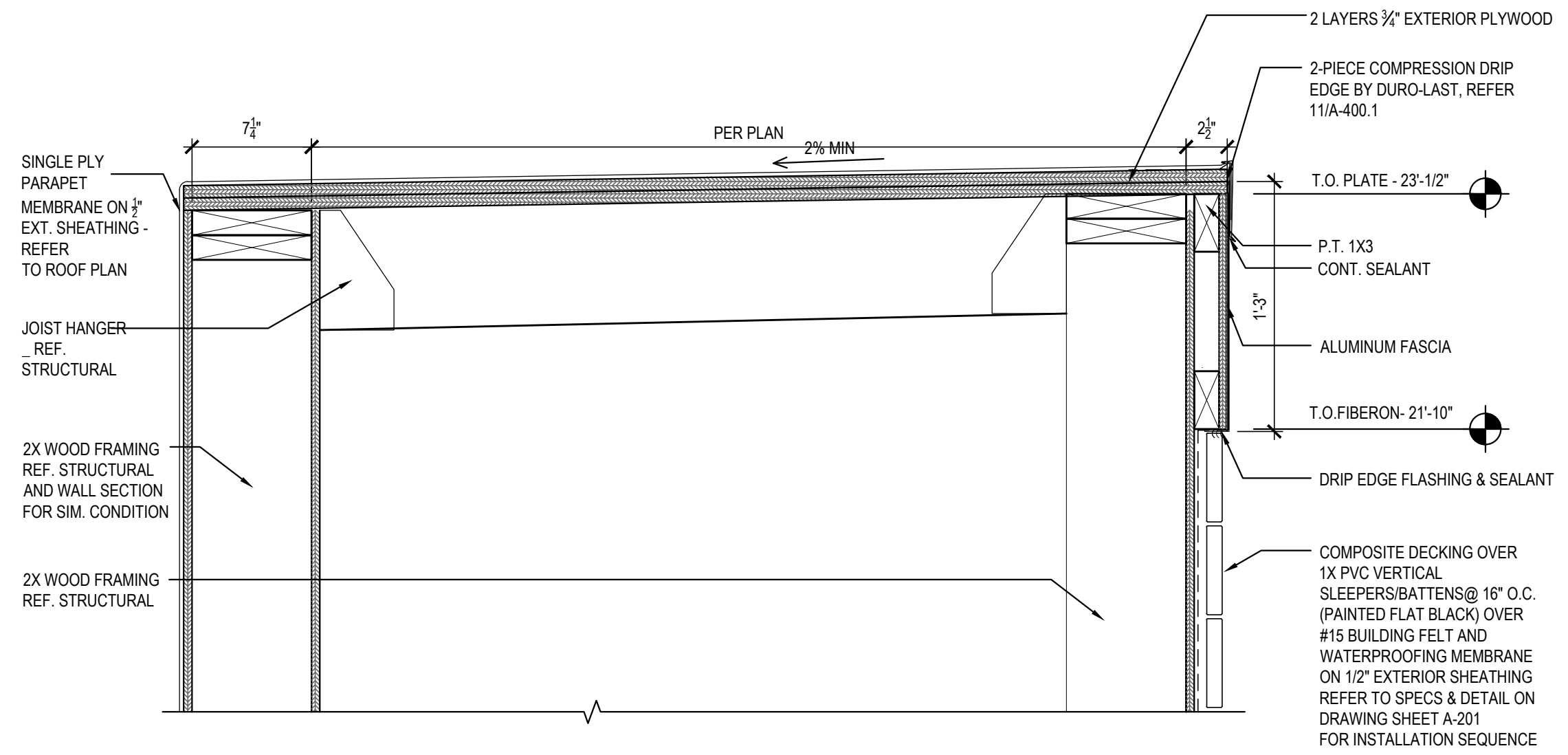
PARAPET/CORNICE DETAIL	10
Scale= 1 1/2" = 1'-0"	A-400.1



WALL DETAIL	09
Scale= 1 1/2" = 1'-0"	A-400.1



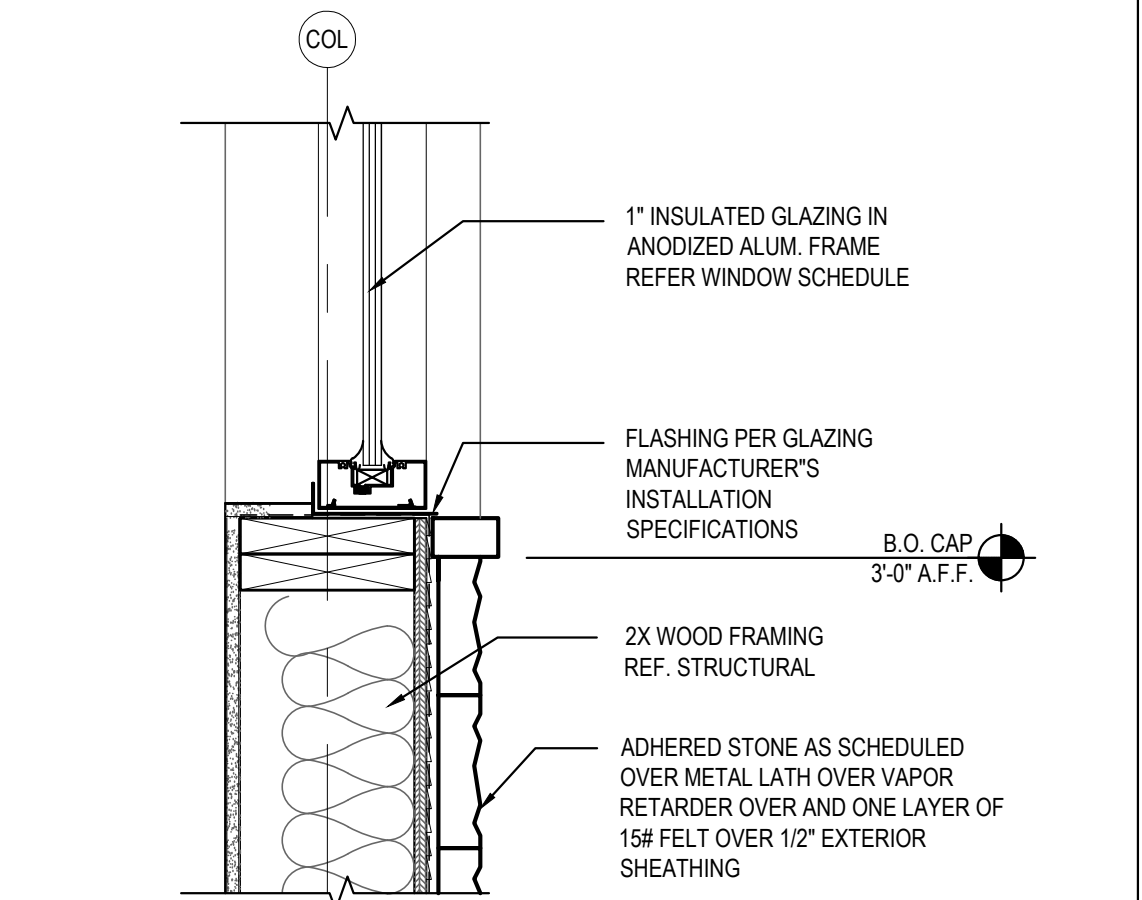
PARAPET DETAIL	08
Scale= 1 1/2" = 1'-0"	A-400.1



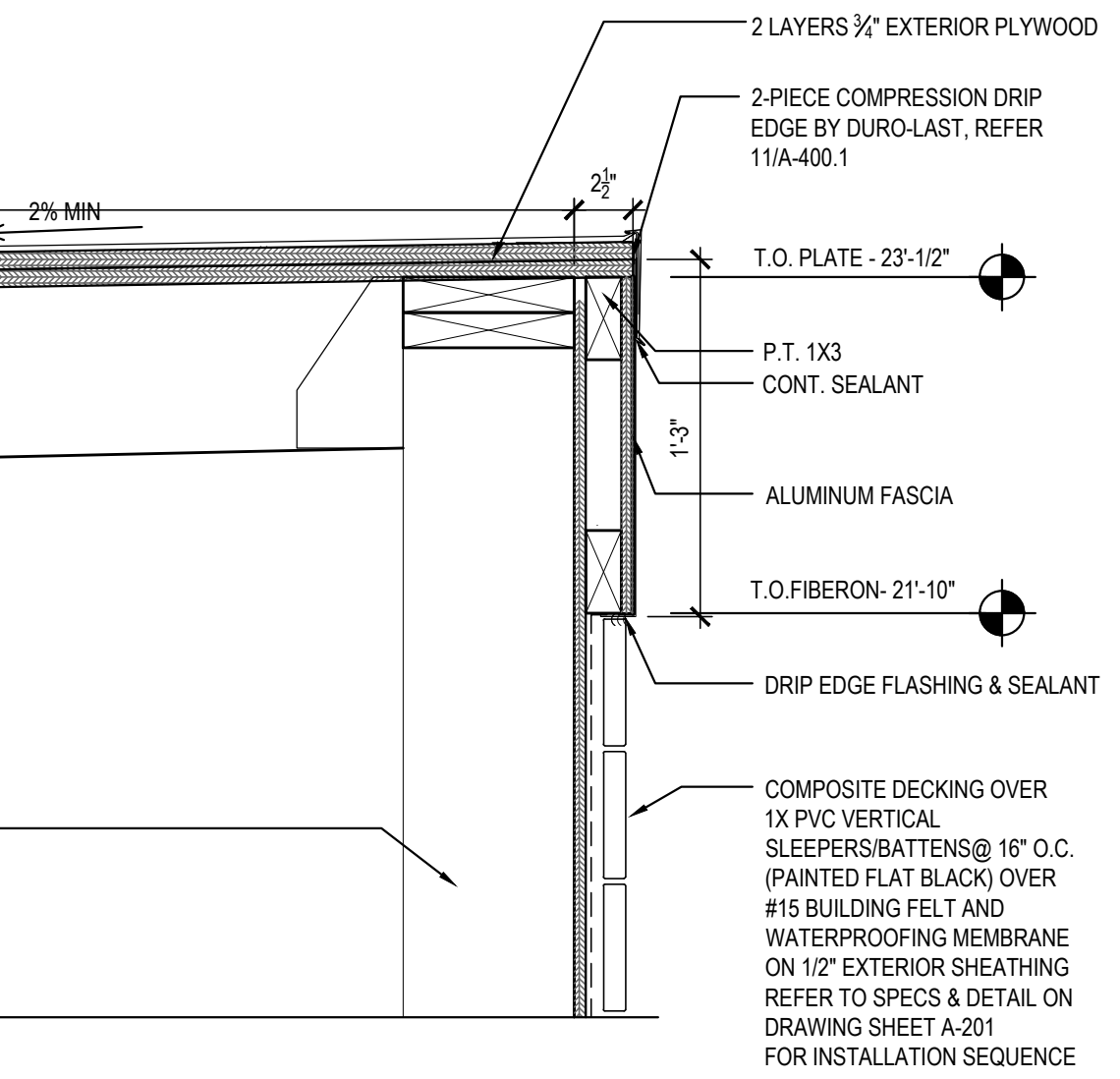
PARAPET DETAIL 07
Scale= 1 1/2" = 1'-0" A-400

NOT USED	04
Scale = 1 1/2" = 1'-0"	A-400.1

NOT USED - DETAIL	06
	A-400.1

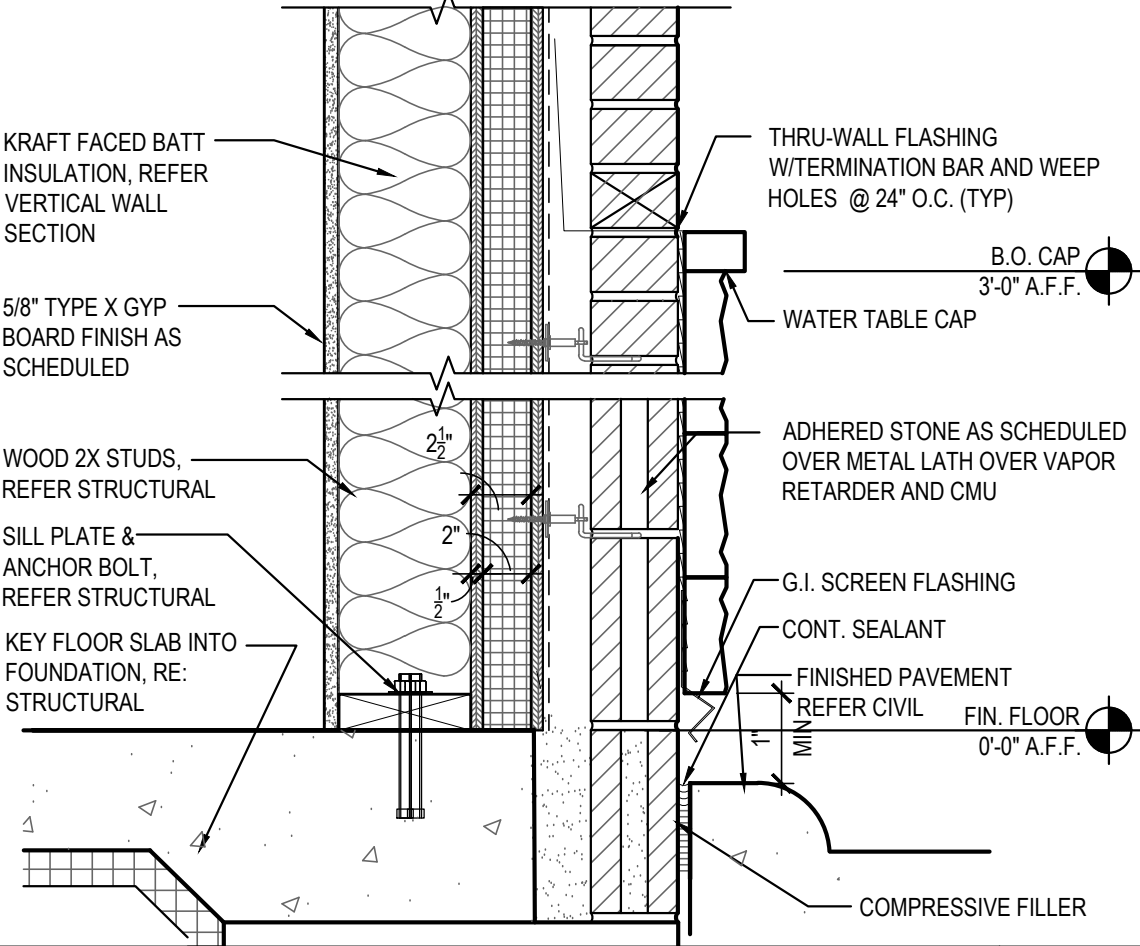


SILL DETAIL	05
	A-400.1

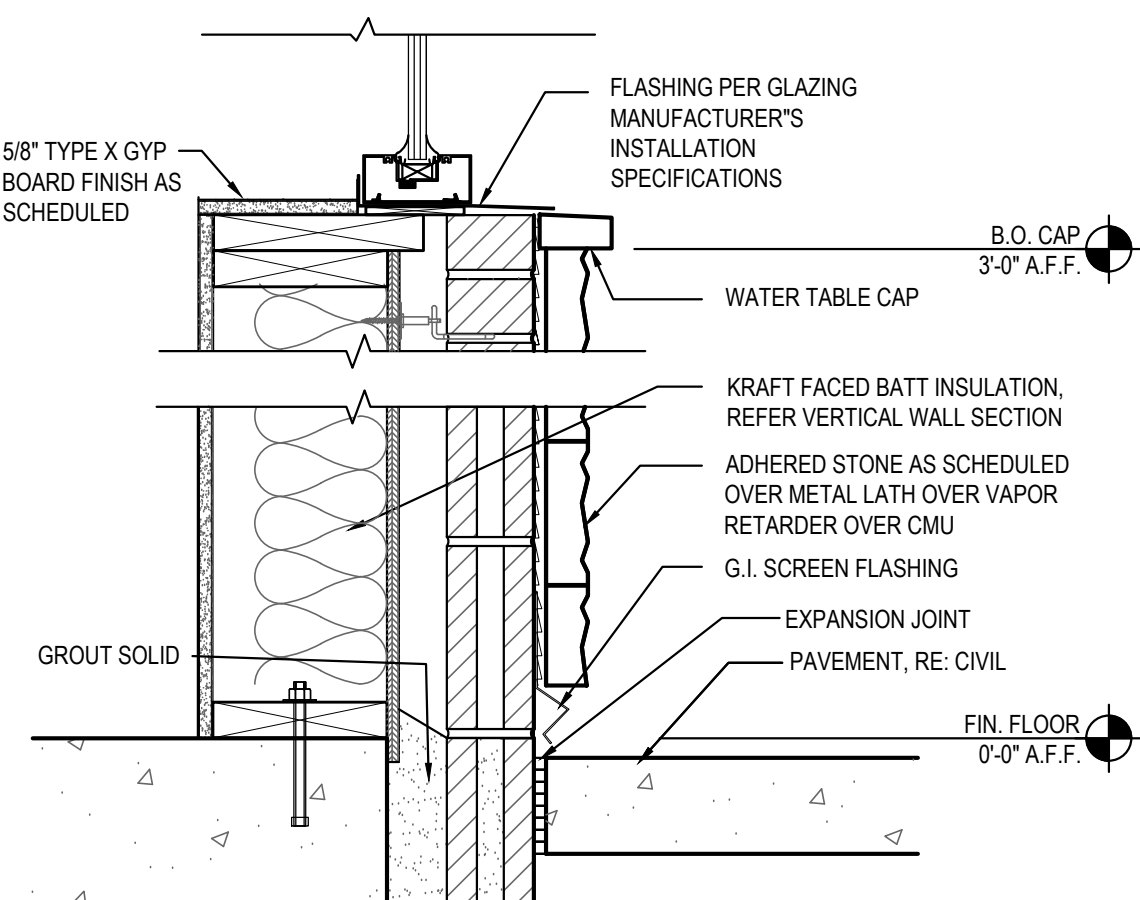


PARAPET DETAIL	07
Scale= 1 1/2" = 1'-0"	A-400.

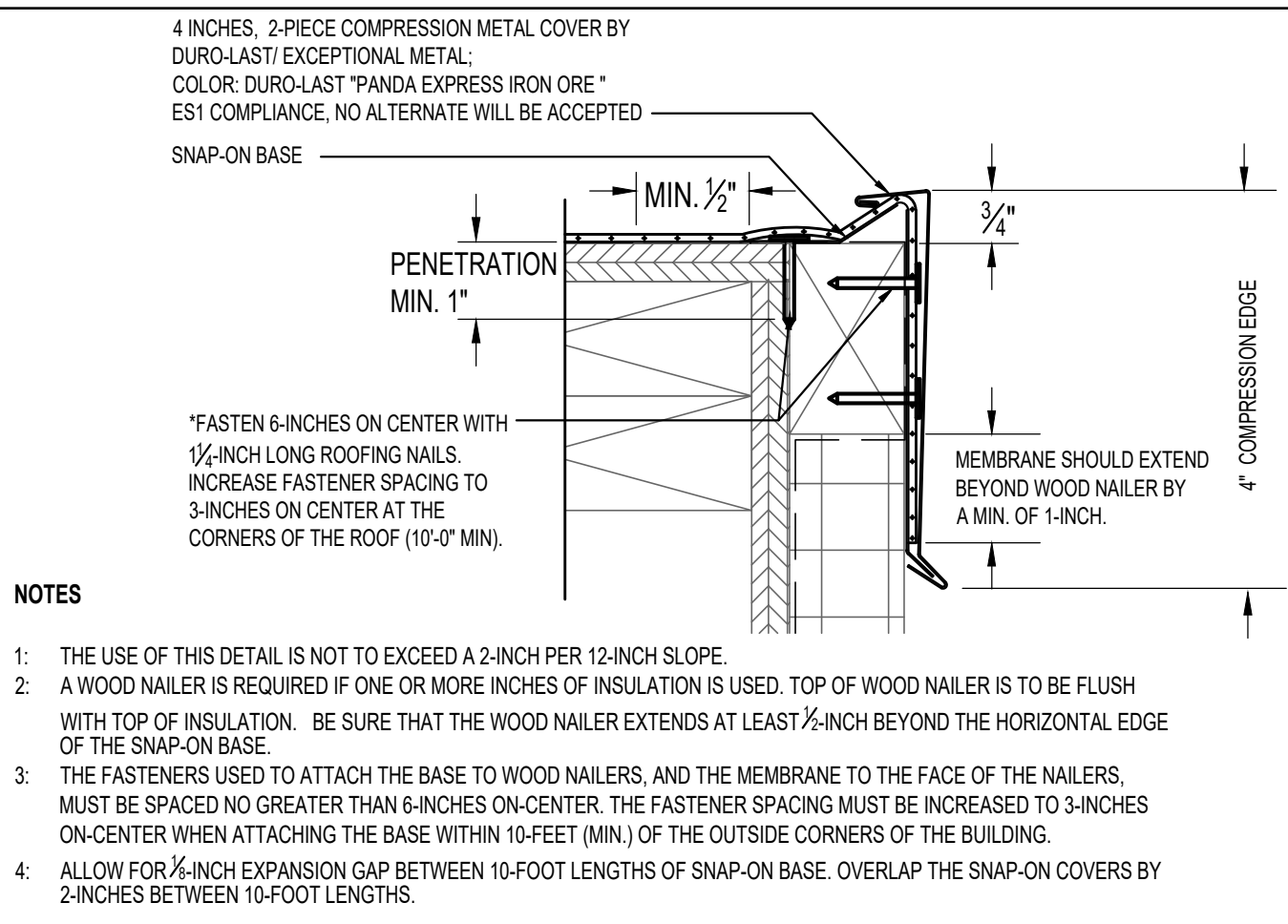
NOT USED	3
Scale= 1 1/2" = 1'-0"	A-400.



SILL DETAIL	02
Scale= 1 1/2" = 1'-0"	A-400.



SILL DETAIL	01
Scale= 1 1/2" = 1'-0"	A-400.



4-INCH HIGH, 2-PIECE COMPRESSION

EDGE	11	PARAPET
NTS	A-400.1	Scale

DETAIL	08	SILL
$\pm 1\ 1/2" \approx 1'-0"$	A-400.1	

DETAIL	05	SILL
	A-400.1	Scale



PANDA EXPRESS, INC.
1683 Walnut Grove Ave.
Rosemead, California
91770
Telephone: 626.799.9898
Facsimile: 626.372.8288

All ideas, designs, arrangement and plans indicated or represented by this drawing are the property of Panda Express Inc. and were created for use on this specific project. None of these ideas, designs, arrangements or plans may be used by or disclosed to any person, firm, or corporation without the written permission of Panda Express Inc.

REVISIONS:

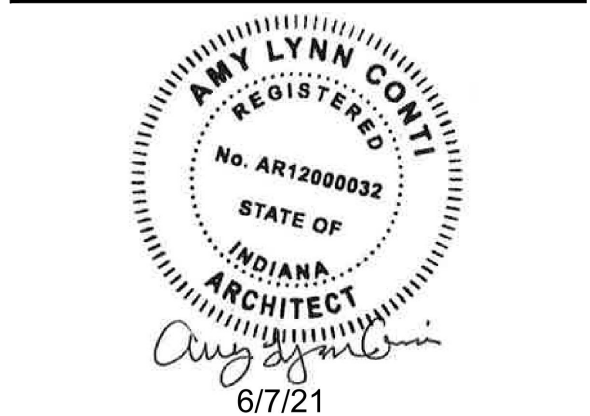
[illegible]

ISSUE DATE:

	STATE PERMIT	06.07.21

DRAWN BY: XXX

PANDA PROJECT #: D8060
ARCH PROJECT #: JCDT20-0240



NORR
ARCHITECTS ENGINEERS PLANNERS

PANDA EXPRESS
TRUE WARM & WELCOME
390 W Spring Mill Pointe Dr.
Westfield, IN 46074

A-400.1

ARCHITECTURAL
DETAILS

TRUE WARM & WELCOME 2300 R5