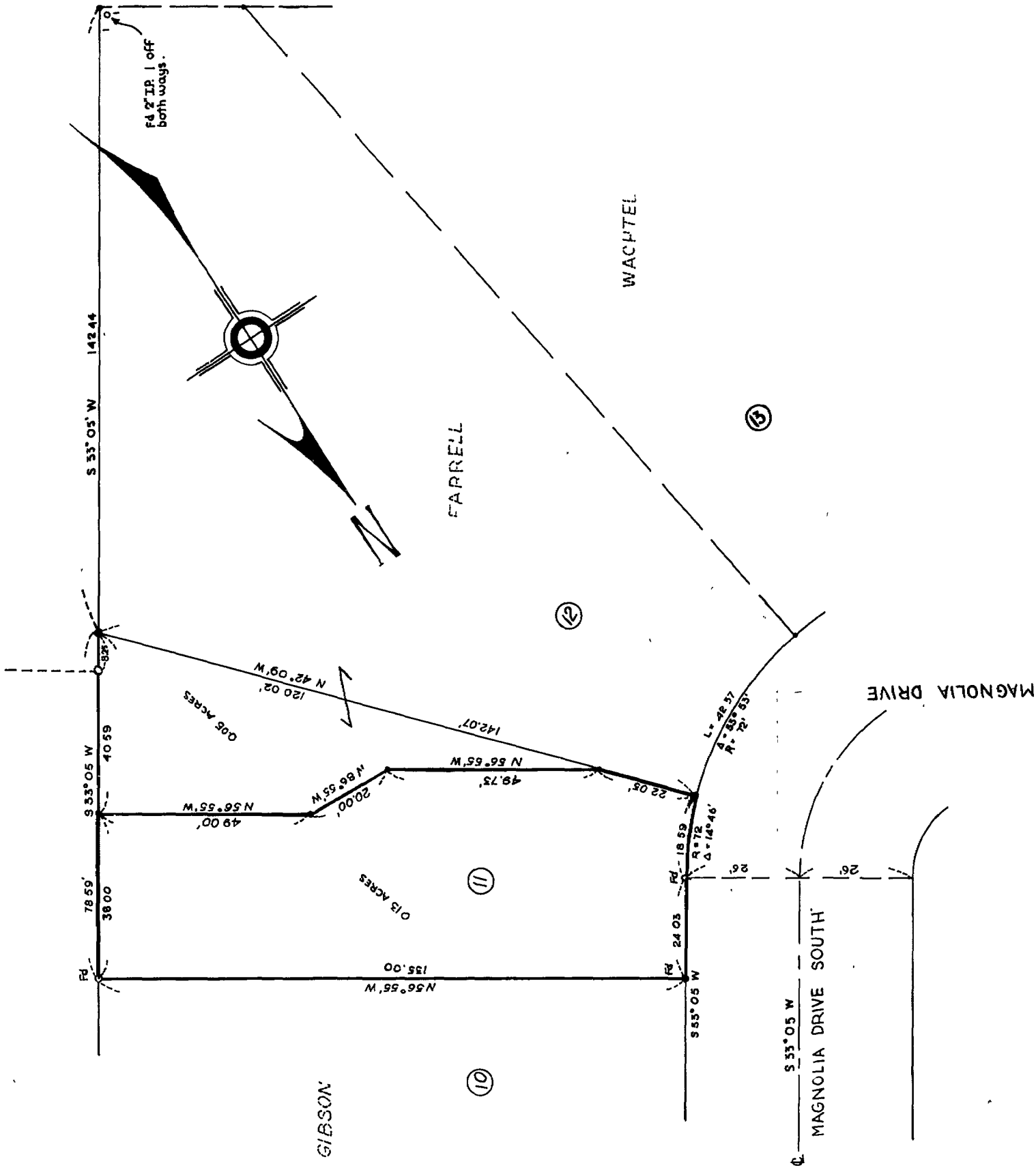


DRISCOLL UNRECORDED SUBDIVISION



NOTE:
1. Street monuments dug for but not found.
o Iron Pipe found
• Iron Pipe set

BASIS OF BEARINGS:

3.33°05'W
The southeasterly property line of the Woodland Park Tract Map was used as bearing for this map. The Woodland Park Map, Tract No 52, was recorded in the County Records Office of Santa Clara County in Book #1 of maps Pages 52 & 53 on May 10, 1937.

ENGINEERS CERTIFICATE

I hereby certify this to be a true map of a survey made under my supervision during July 1957 at the request of Lenard Lincoln

Calvin M. Jones
Registered Civil Engineer 7542

COUNTY ENGINEER'S CERTIFICATE

This map has been examined in compliance with the provisions of Section 8776 of the Business and Professions Code and was found satisfactory.

James B. Enochs, Acting County Engineer
By Calvin M. Jones Deputy

RESOLUTION OF BOARD OF SUPERVISORS

Resolution of the Board of Supervisors approving this map recorded August 23, 1957
Recorders File No. 1374640

COUNTY RECORDER'S CERTIFICATE

File No. 1374640 Fee \$15.00 Paid
Filed at the request of Calvin M. Jones and recorded in Book 52 of Maps at Page 52 in the office of the County Recorder of Santa Clara County State of California this 22 day of August, 1957 at 9:59 A.M.

Syl C. Tully, County Recorder
By Calvin M. Jones Deputy

RECORD OF SURVEY

A PORTION OF LOT II, BLOCK 2, MAP OF WOODLAND PARK
BOOK 1 OF MAPS PAGE 52 & 53
PROPERTY OF GLEN FARRELL
SANTA CLARA COUNTY, CALIF

CALVIN M. JONES CIVIL ENGINEER
550 COLLEGE AVENUE
PALO ALTO, CALIFORNIA

SCALE 1" = 20'

JULY 1957