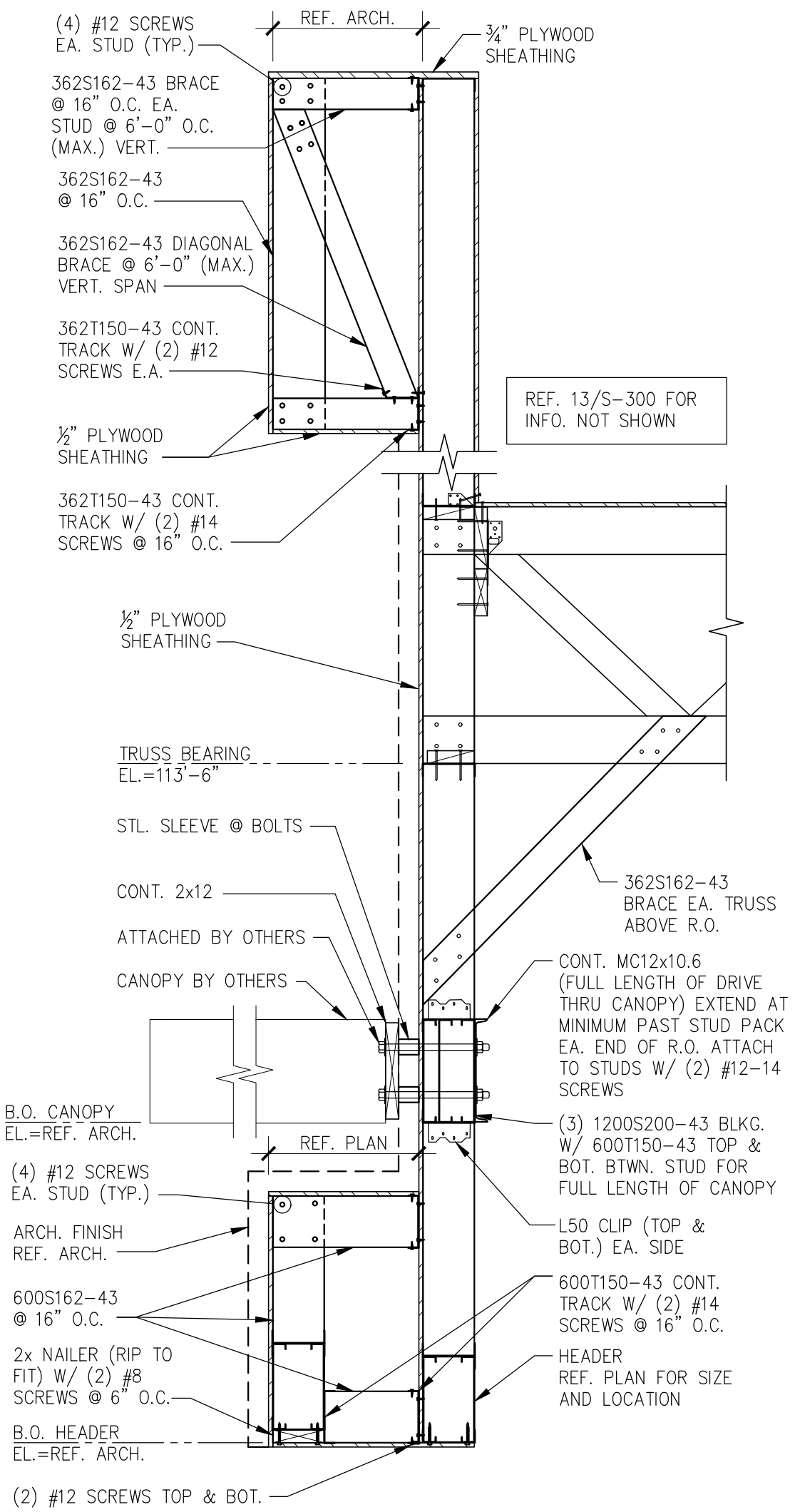
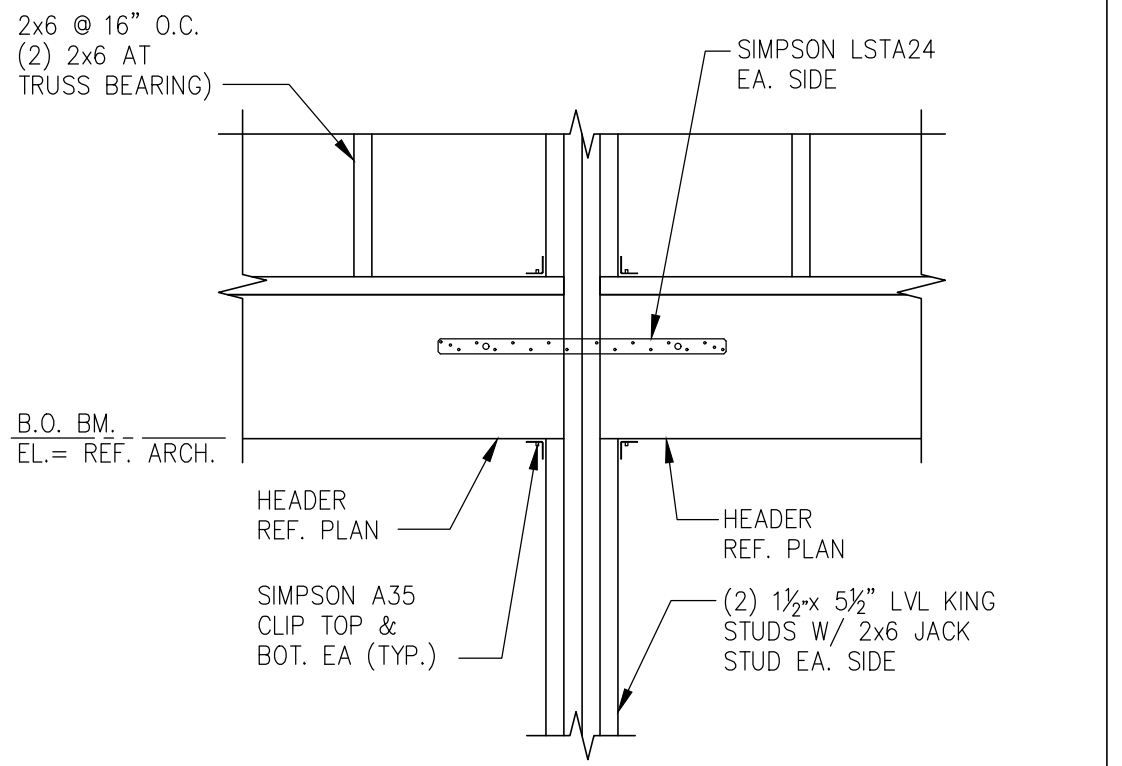


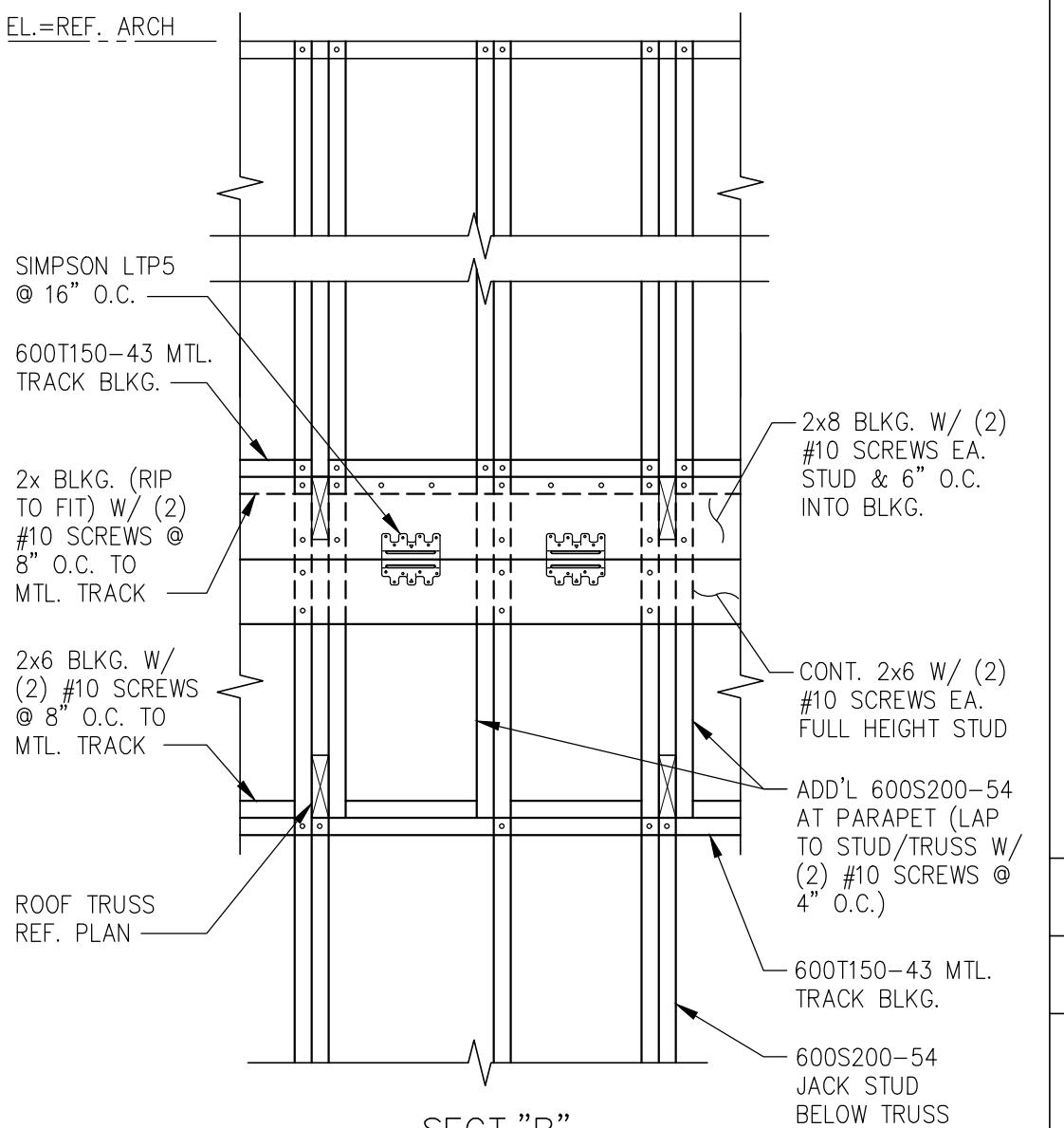
SECTION 16
SCALE: 3/4"=1'-0" S-300



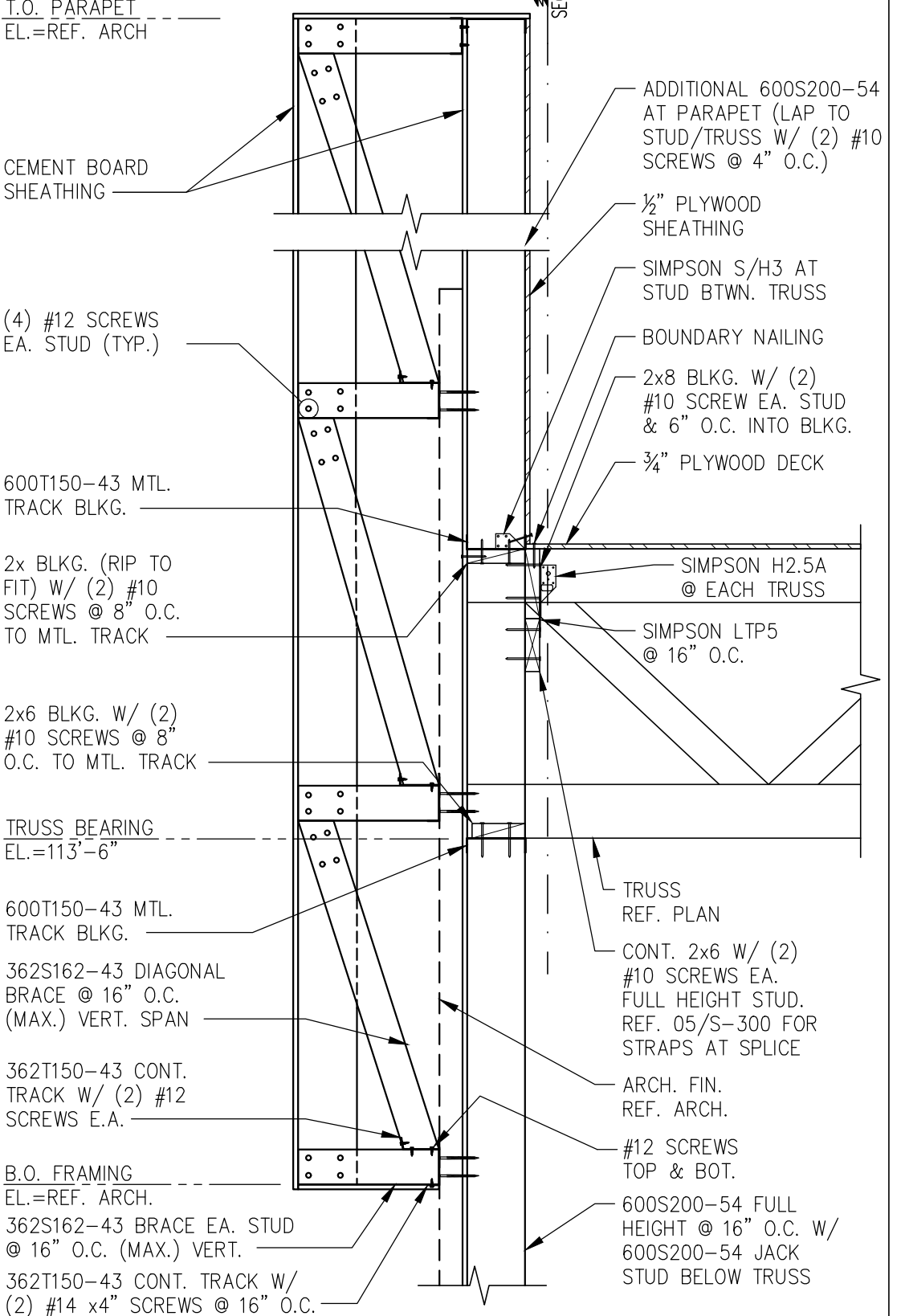
SECTION 19
SCALE: 3/4"=1'-0" S-300



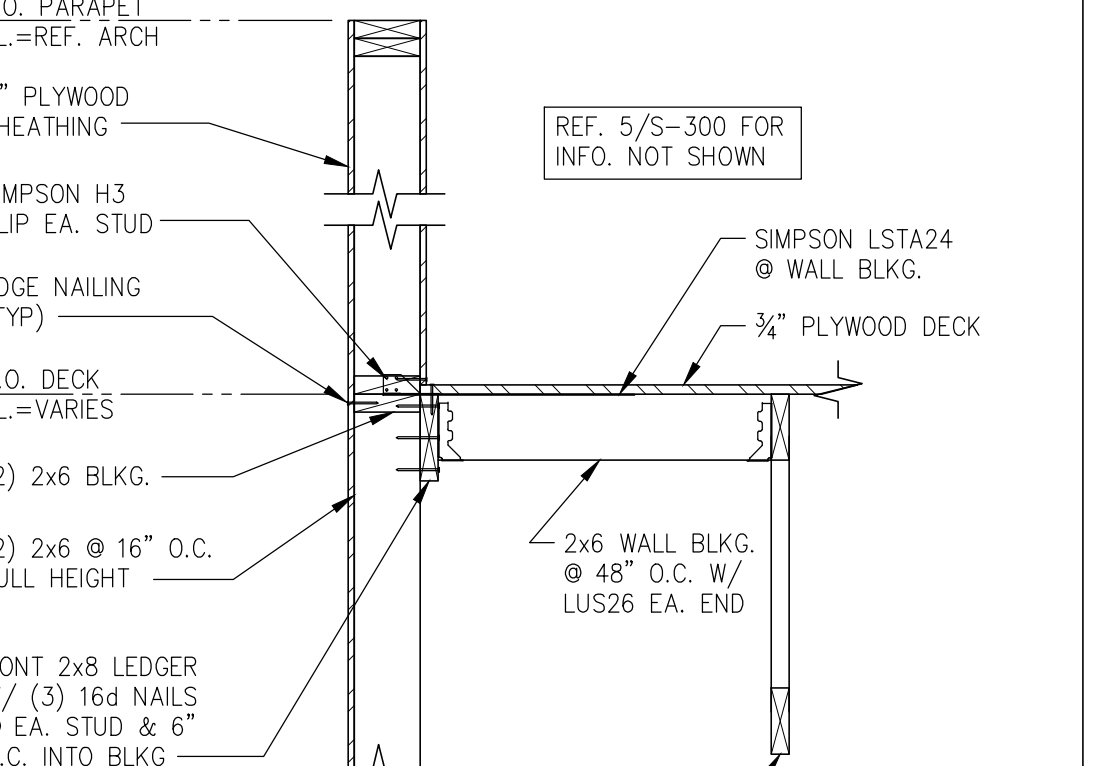
SECTION 11
SCALE: 3/4"=1'-0" S-300



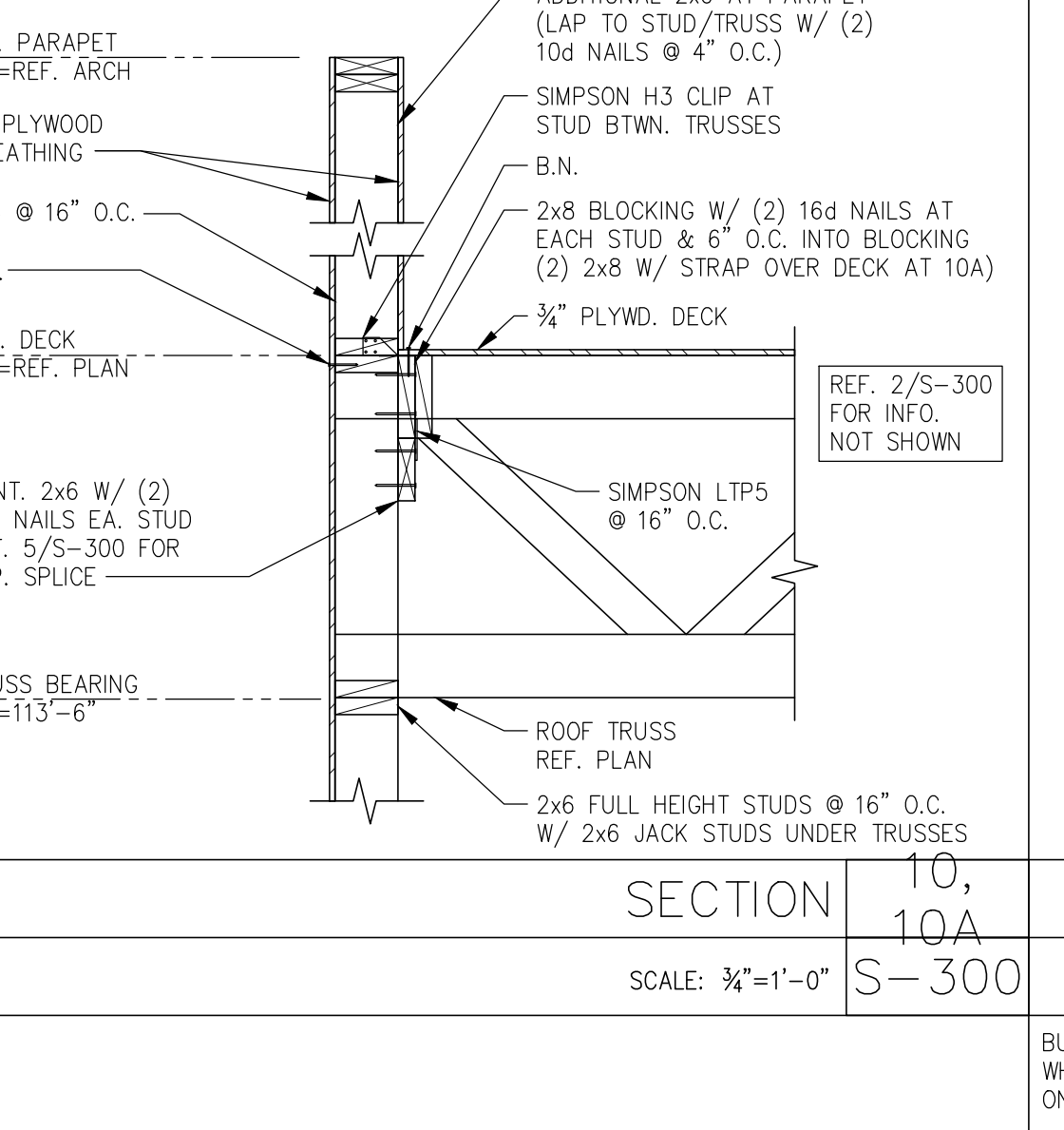
SECTION 11
SCALE: 3/4"=1'-0" S-300



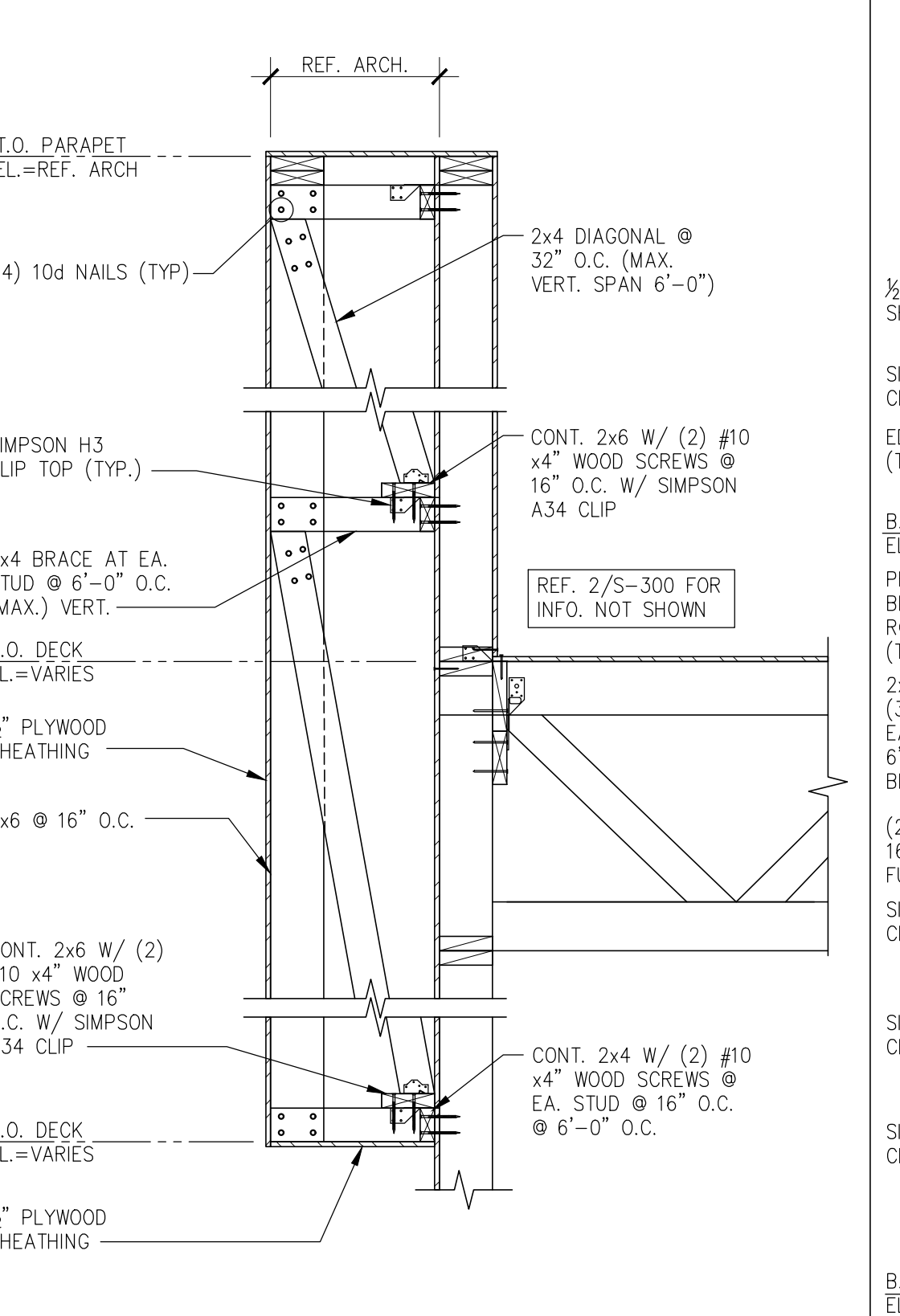
SECTION 11
SCALE: 3/4"=1'-0" S-300



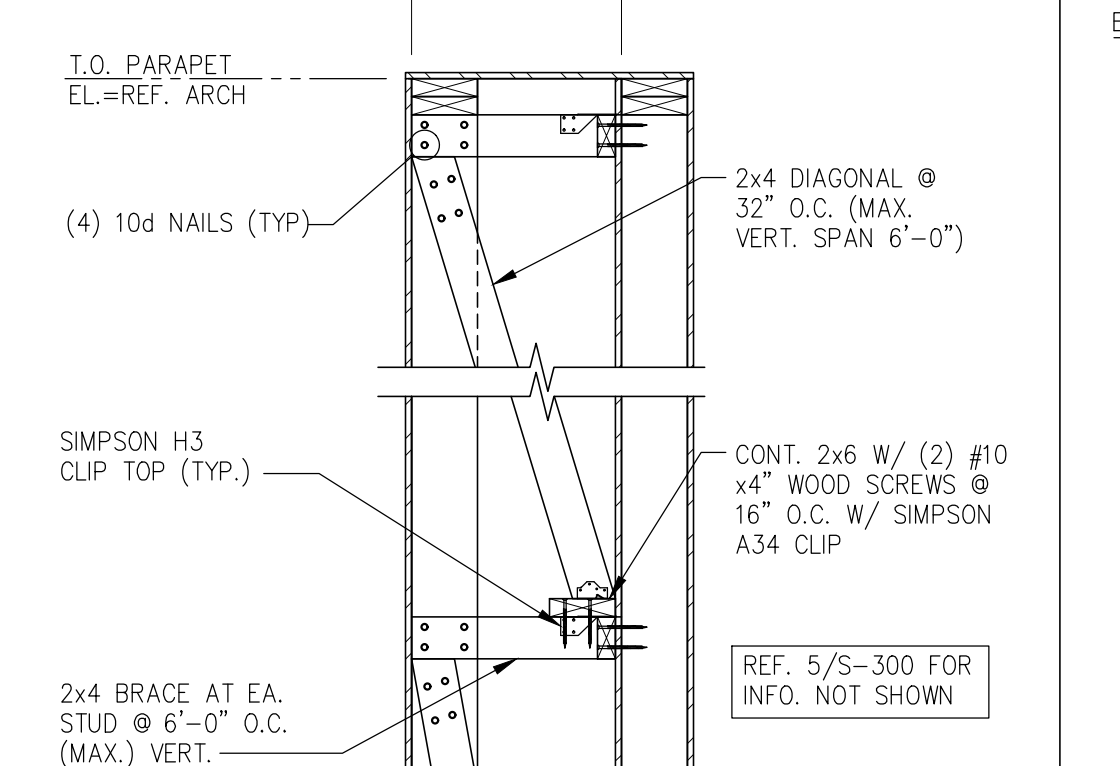
SECTION 11
SCALE: 3/4"=1'-0" S-300



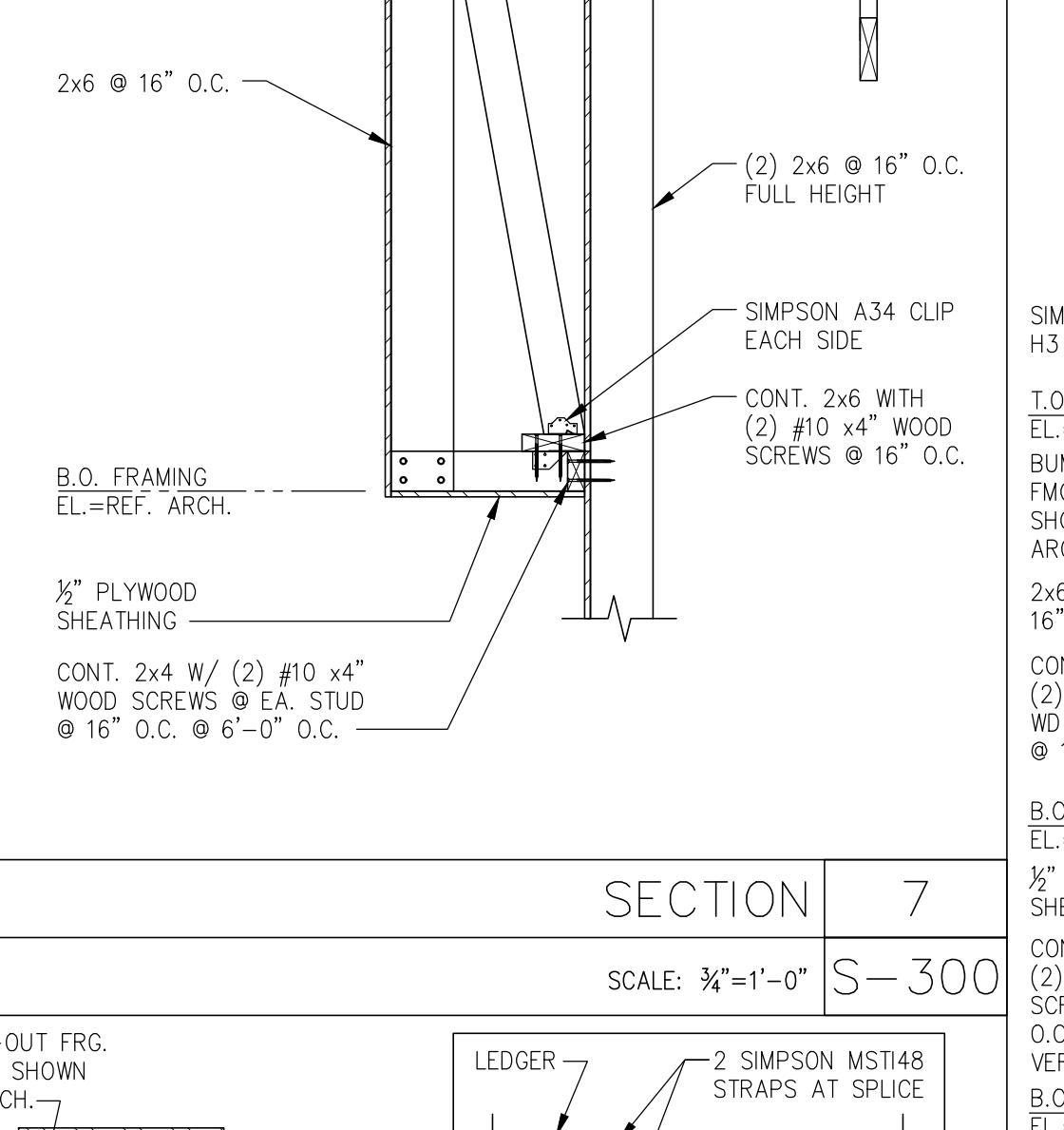
SECTION 11
SCALE: 3/4"=1'-0" S-300



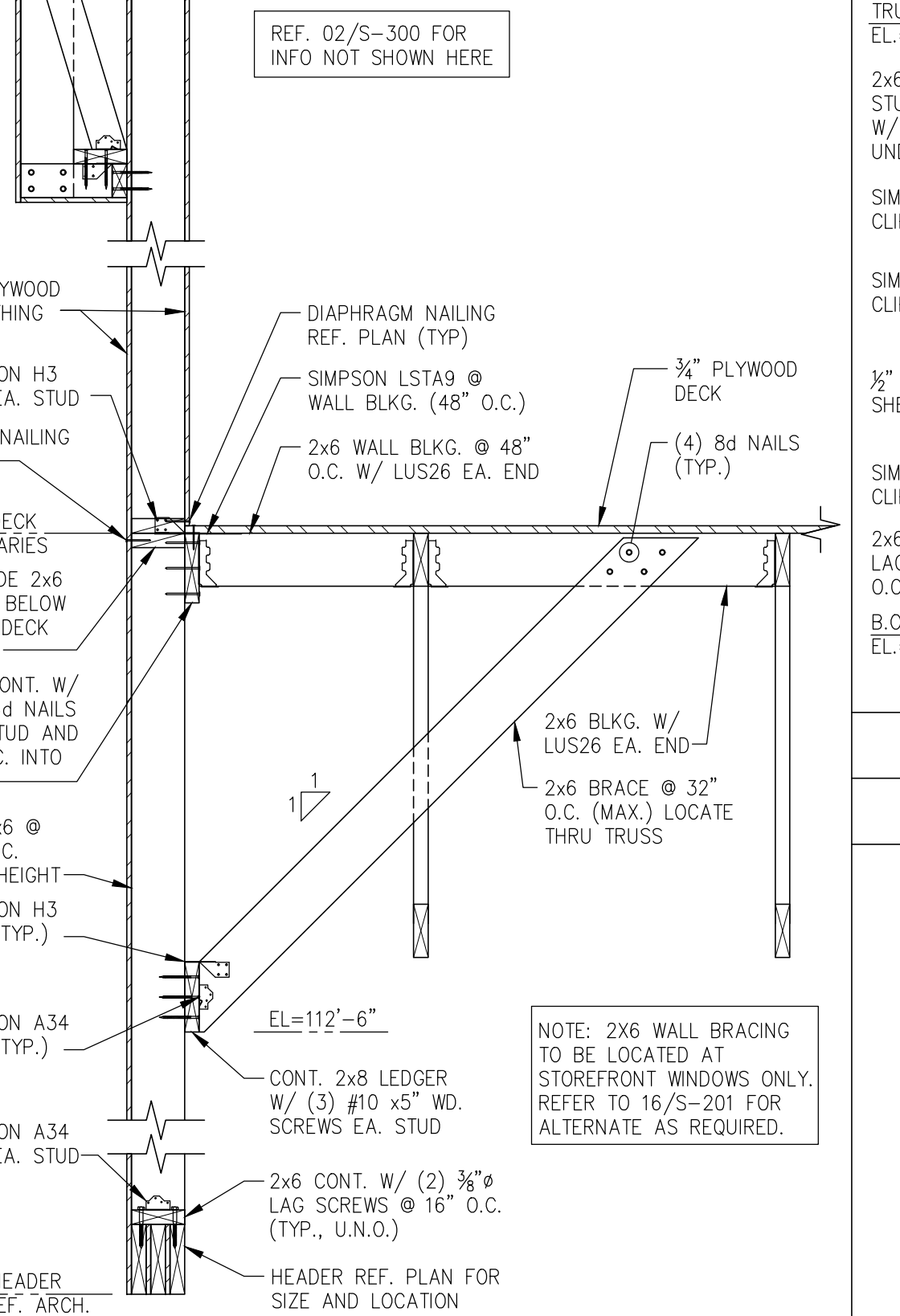
SECTION 11
SCALE: 3/4"=1'-0" S-300



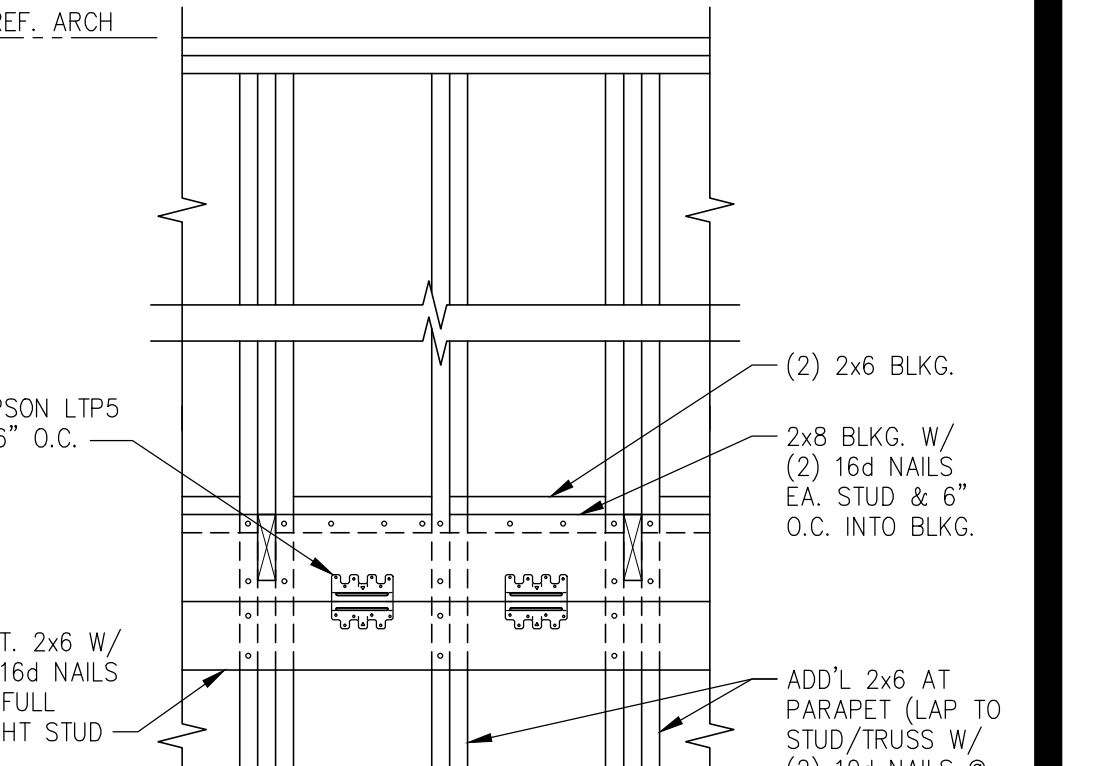
SECTION 11
SCALE: 3/4"=1'-0" S-300



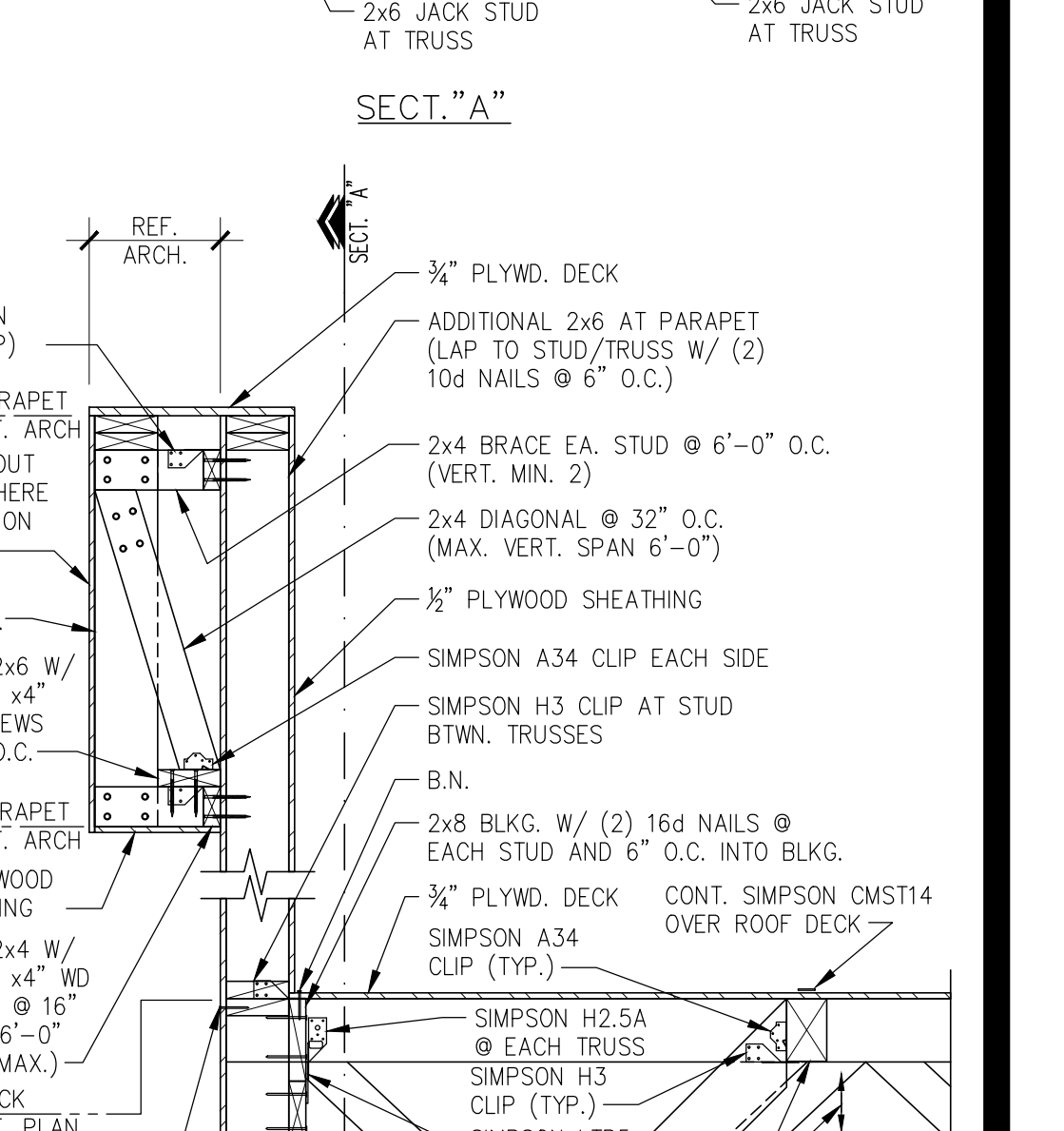
SECTION 11
SCALE: 3/4"=1'-0" S-300



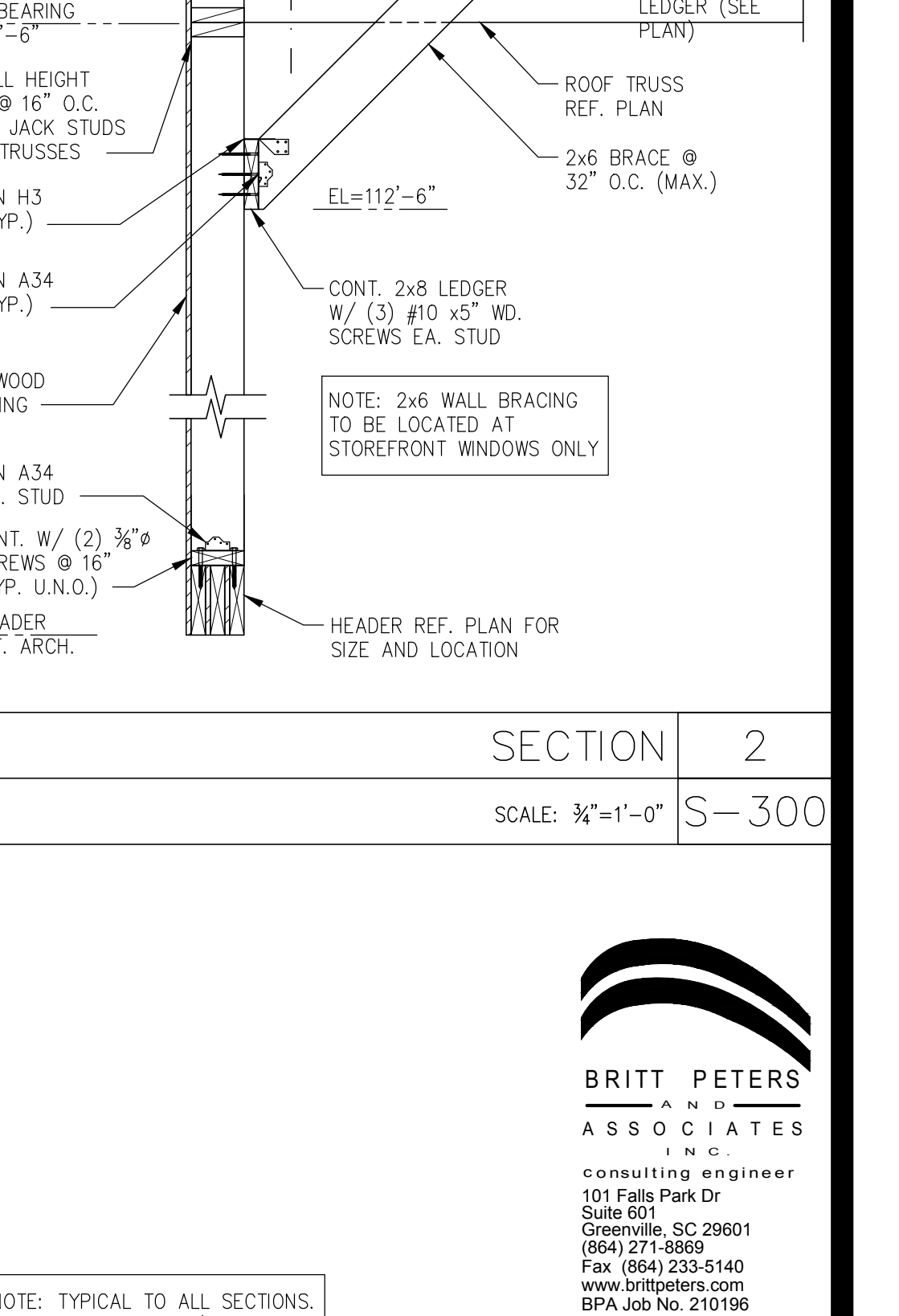
SECTION 11
SCALE: 3/4"=1'-0" S-300



SECTION 11
SCALE: 3/4"=1'-0" S-300



SECTION 11
SCALE: 3/4"=1'-0" S-300



SECTION 11
SCALE: 3/4"=1'-0" S-300



PANDA EXPRESS, INC.
1683 Walnut Grove Ave.
Rosemead, California
91770
Telephone: 626.799.9898
Facsimile: 626.372.8288

All ideas, designs, arrangement and plans indicated or represented by this drawing are the property of Panda Express Inc. and were created for use on this specific project. None of these ideas, designs, arrangements or plans may be used by or disclosed to any person, firm, or corporation without the written permission of Panda Express Inc.

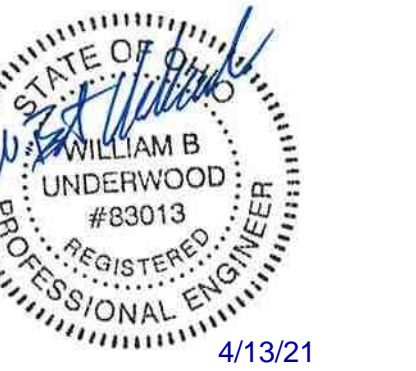
REVISIONS:

ISSUE DATE:

1ST SITE PLAN REVIEW	02-16-21
2ND PERMIT/BID SET	04-09-21

DRAWN BY: KB

PANDA PROJECT #: S8-22-D8193
PANDA STORE #: -
ARCH PROJECT #: 20044.021



hckloverarchitect
8813 PENROSE LANE, SUITE 400
LEWISIA, KS 66219
ph: 913.649.8181 • fx: 913.649.1275

PANDA EXPRESS
TRUE WARM & WELCOME
1485 MAIN ST.
HAMILTON, OH 45013



S-300

FRAMING SECTIONS

TRUE WARM & WELCOME 2300 R5