

CORNER RECORD

Document Number

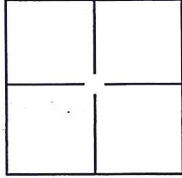
CR328City of NAPACounty of NAPA

, California

Brief Legal Description RESET PI MONUMENT IN CLAY STREET CENTERLINE BETWEEN SEMINARY AND FRANKLIN STREETS AS SHOWN ON 40 RS 19, NAPA COUNTY RECORDS

CORNER TYPE

COORDINATES(Optional)

Government Corner ☐Control ☐Meander ☐Property ☐Rancho ☐Other ☒

N. _____

E. _____

Zone _____

NAD27 ☐NAD83 ☐

NAD83 Epoch _____

Elev. _____

Vert. Datum: _____

NGVD29 ☐NADV88 ☐

Meas. Units: _____

Metric ☐Imperial ☐Date of Survey February 27, 2015

Corner -

Left as found ☐Found and tagged ☐Established ☐Reestablished ☒Rebuilt ☐

Identification and type of corner found: Evidence used to identify or procedure used to establish or reestablish the corner:

THE MONUMENT AT THE POINT OF INTERSECTION IN THE CLAY STREET CENTERLINE BETWEEN SEMINARY AND FRANKLIN STREETS (BRASS PIN MONUMENT) AS SHOWN ON 40 RS 19, NAPA COUNTY RECORDS, WAS FOUND AND TIED OUT DURING A REFERENCE POINT OBSERVATION IN ANTICIPATION OF A STREET RECONSTRUCTION PROJECT. THE MONUMENT WAS DESTROYED DURING PROJECT OPERATIONS AND WAS RE-ESTABLISHED USING MEASUREMENTS FROM THE RP OBSERVATION (CITY OF NAPA FN 2014-05).

A description of the physical condition of the monument as found and as set or reset: SET BRASS PIN FLUSH WITH THE ASPHALT SURFACE MARKED "CITY OF NAPA 2015"

SURVEYOR'S STATEMENT

This Corner Record was prepared by me or under my direction in conformance with the Land Surveyor's Act on April 24, 2015.

Signed [Signature]P.L.S. or R.C.E. No.: 8985

COUNTY SURVEYOR'S STATEMENT

This Corner Record was received April 24, 2015 and examined and filed April 28, 2015.

Signed [Signature]P.L.S. or R.C.E. No.: 8544Title County Surveyor

County Surveyor's Comment _____

328

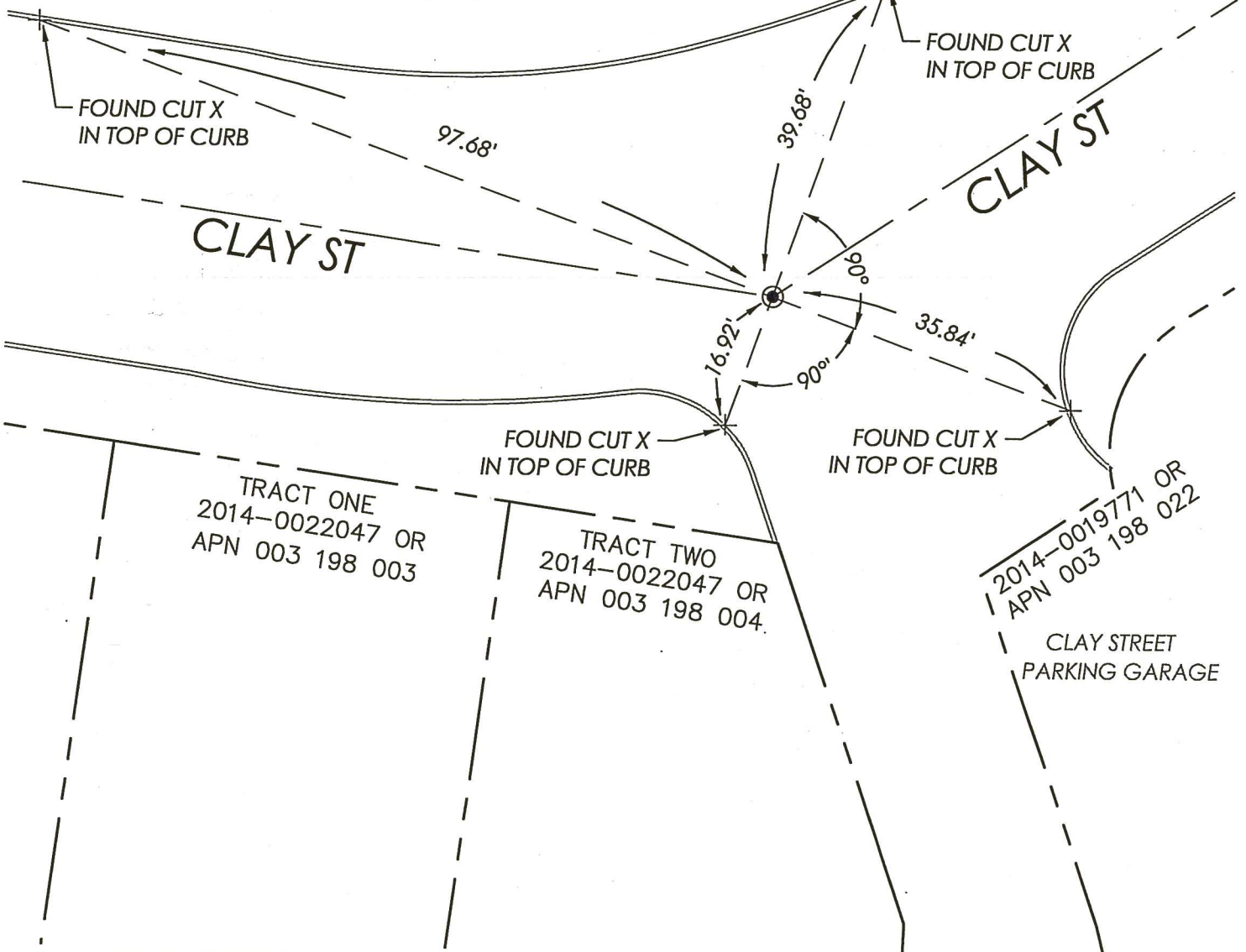


Scale: 1"=20'

PTN BLK 3
HILL'S ADD'N
2 RM 6
2013-0026459 OR
APN 003 197 010

PTN BLK 3
HILL'S ADD'N
2 RM 6
2010-0022497 OR
APN 003 197 009

10 RS 9
PTN LOT 8 BLK 3
HILL'S ADD'N
VOL P MISC RECORDS 149
APN 003 197 014



LEGEND

⊙ - SET BRASS PIN MONUMENT STAMPED "CITY OF NAPA - 2015".
MEASUREMENTS TAKEN DURING RP OBSERVATIONS FOR FND BRASS PIN
IN STREET AS SHOWN ON FN 2014-05, DATED AUGUST 19, 2014 ON
FILE IN THE OFFICE OF THE CITY ENGINEER OF THE CITY OF NAPA.