

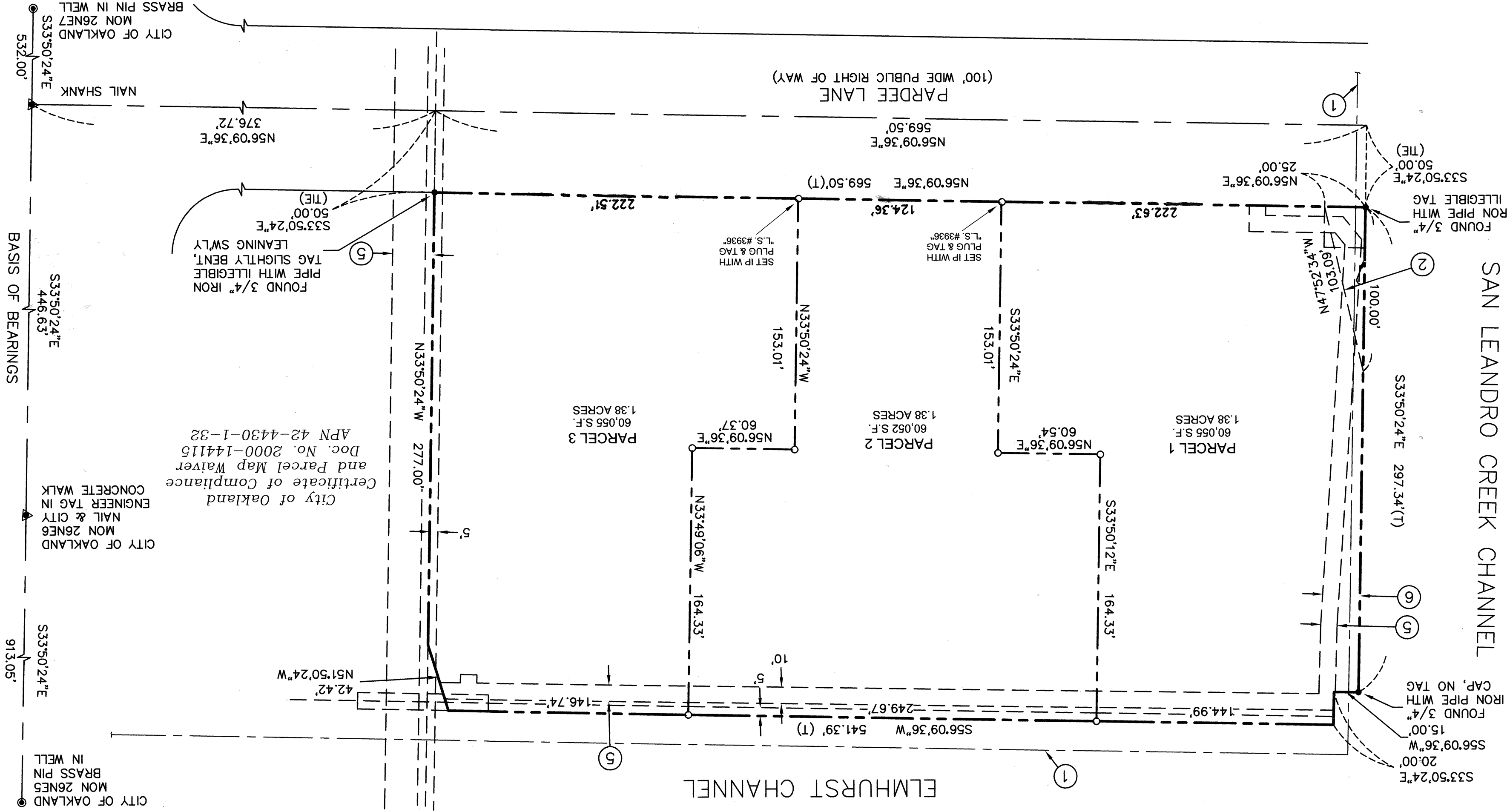
- LEGEND:
- PROPOSED PROPERTY LINE
 - - - STREET CENTERLINE
 - - - EXISTING EASEMENT
 - - - MATHEMATICAL TIE
 - FOUND MONUMENT, AS NOTED
 - FOUND IRON PIPE, AS NOTED
 - SET NAIL & TAG WITH "L.S. 3936"
- UNLESS OTHERWISE NOTED

PARCEL MAP NO 9491

BEING THAT CERTAIN PARCEL OF LAND GRANTED TO
OAKPORT ASSOCIATES, A LIMITED PARTNERSHIP
DOC. NO. 80-034142, FEBRUARY 27, 1980, ALAMEDA
COUNTY RECORDS

CITY OF OAKLAND ALAMEDA COUNTY CALIFORNIA
JULY, 2007
SHEET 2 OF 2 SHEETS

EDGEWATER DRIVE



NOTE:

THE CENTERLINE OF EDGEWATER DRIVE BETWEEN CITY OF OAKLAND MONUMENTS 26NE5 AND 26NE7 IS TAKEN AS S33°50'24"E. MONUMENTS ARE AS DESCRIBED IN THE CERTIFICATE OF COMPLIANCE RECORDED AS INSTRUMENT NO. 2002-439035, ALAMEDA COUNTY OFFICIAL RECORDS

RECIPROCAL EASEMENTS SET FORTH ON DECLARATION OF COVENANTS, CONDITIONS, RESTRICTIONS AND RECIPROCAL EASEMENTS DATED AS OF Nov. 15, 2007, RECORDED AS INSTRUMENT NO. 200739324, ALAMEDA COUNTY RECORDS.

REFERENCE:

EASEMENTS OF RECORD PER FIRST AMERICAN TITLE PRELIMINARY TITLE REPORT ORDER NO. NCS-275735-CC WITH AN EFFECTIVE DATE OF JANUARY 9, 2007
SHELL OIL PIPELINE EASEMENT (UNKNOWN WIDTH) APPROXIMATE CENTERLINE SHOWN
RE: 1649 IM: 702
NOTE: THIS EASEMENT EXPIRED AUGUST 1, 2005 PER ABOVE REFERENCED DOCUMENT
THE CITY OF OAKLAND ROADWAY, PATH AND SLOPE EASEMENT INSTRUMENT NO. 80-034142
THE CITY OF OAKLAND ET AL AIRSPACE EASEMENT INSTRUMENT NO. 80-034142
THE CITY OF OAKLAND (BLANKET EASEMENT OVER ENTIRE PROPERTY)
UTILITY EASEMENT (NOT LOCATABLE) INSTRUMENT NO. 80-034142
PACIFIC GAS AND ELECTRIC COMPANY UTILITY EASEMENT INSTRUMENT NO. 80-217414
NOTE: ALSO CONTAINED WITHIN DOCUMENTS RE: 536 IM: 900 AND RE: 3608 IM: 3
PACIFIC GAS AND ELECTRIC COMPANY UTILITY EASEMENT INSTRUMENT NO. 99-370056

PARCEL MAP 9491 MAP BK 302 PB-64