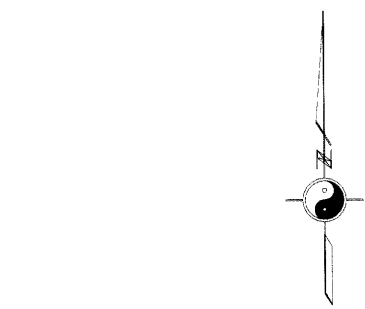


# RECORD OF SURVEY

## NO. 32 - 52

SEE SHEET No. 3

PM 6.19  
N 2313070.244  
E 6932301.136



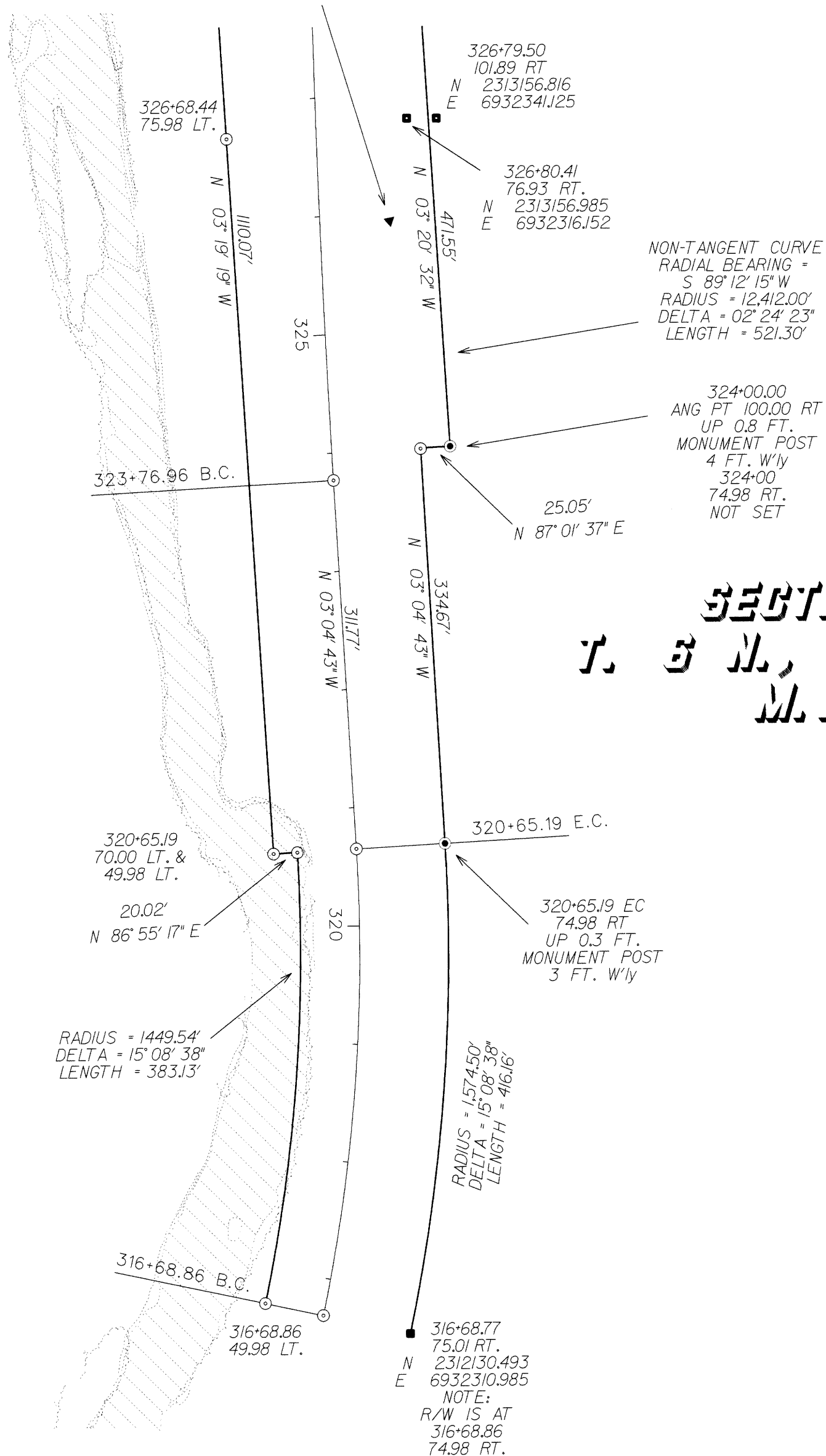
GRID NORTH  
GEODETIC AZ. = GRID AZ. + CONVERGENCE ANGLE  
CONVERGENCE ANGLE AT PM 6.19 = +0° 47' 28"

0 50 100  
SCALE 1 INCH = 100 FEET

TO CONVERT GRID DISTANCE TO GROUND DISTANCE,  
DIVIDE THE GRID DISTANCE BY THE GRID FACTOR.  
THE GRID FACTOR FOR THIS PROJECT = 0.99967919

### LEGEND

- ▼ BASIC PROJECT CONTROL, AS NOTED
- ◆ FOUND LAND NET CORNER, AS NOTED
- ▼ SET 1.5 INCH CALTRANS ALUMINUM CAP  
ON 3/4 INCH REBAR, MARKED FOR POST MILE
- SET 2 INCH CALIF. DEPT. OF TRANSPORTATION  
BRASS CAP IN CONCRETE, MARKED AS SHOWN
- FOUND 6 INCH SQUARE TYPE "C" R/W MONUMENT
- CALCULATED POINT, NOTHING SET



NON-TANGENT CURVE  
RADIAL BEARING =  
S 89° 12' 15" W  
RADIUS = 12,412.00'  
DELTA = 02° 24' 23"  
LENGTH = 521.30'

324+00.00  
ANG PT 100.00 RT  
UP 0.8 FT.  
MONUMENT POST  
4 FT. W'ly  
324+00  
74.98 RT.  
NOT SET

**SECTION 25  
T. 3 N., R. 25 E.,  
M.D.M.**

STATE ROUTE MNO 182  
R/W CENTERLINE ALIGNMENT DATA

310+50.00 N 2311541.069 E 6932108.297	316+68.86 B.C. N 2312146.254 E 6932237.654	RADIUS = 1,499.52' DELTA = 15° 08' 38" LENGTH = 396.34'
320+65.19 E.C. N 2312540.225 E 6932268.614	323+76.96 B.C. N 2312851.538 E 6932251.870	RADIUS = 12,500.00' DELTA = 07° 22' 10" LENGTH = 1,607.76'
STATION EQUATION: 340+67.55 BK. = 340+98.76 AH.		
339+84.72 E.C. N 2314458.099 E 6932268.866	343+89.92 B.C. N 2314831.042 E 6932296.848	RADIUS = 1,999.36' DELTA = 13° 54' 29" LENGTH = 485.33'
348+75.24 E.C. N 2315314.655 E 6932274.352		

314+99.73  
74.99 RT.  
N 2311965.188  
E 6932275.635

314+99.77  
169.94 RT.  
N 2311945.379  
E 6932368.497

316+68.77  
75.01 RT.  
N 2312130.493  
E 6932310.985  
NOTE:  
R/W IS AT  
316+68.86  
74.98 RT.

320+65.19  
70.00 LT. &  
49.98 LT.  
20.02'  
N 86° 55' 17" E

RADIUS = 1,449.54'  
DELTA = 15° 08' 38"  
LENGTH = 383.13'

RADIUS = 1,574.50'  
DELTA = 15° 08' 38"  
LENGTH = 416.16'

316+68.86 B.C.  
316+68.86  
49.98 LT.

PM 5.89  
N 2311604.358  
E 6932062.168  
EL. 6422.24

310+50.05  
75.00 RT.  
N 2311525.440  
E 6932181.655

310+49.95  
170.03 RT.  
N 2311505.478  
E 6932274.562

309+35.34  
74.83 RT.  
N 2311413.303  
E 6932157.510