

LEGEND

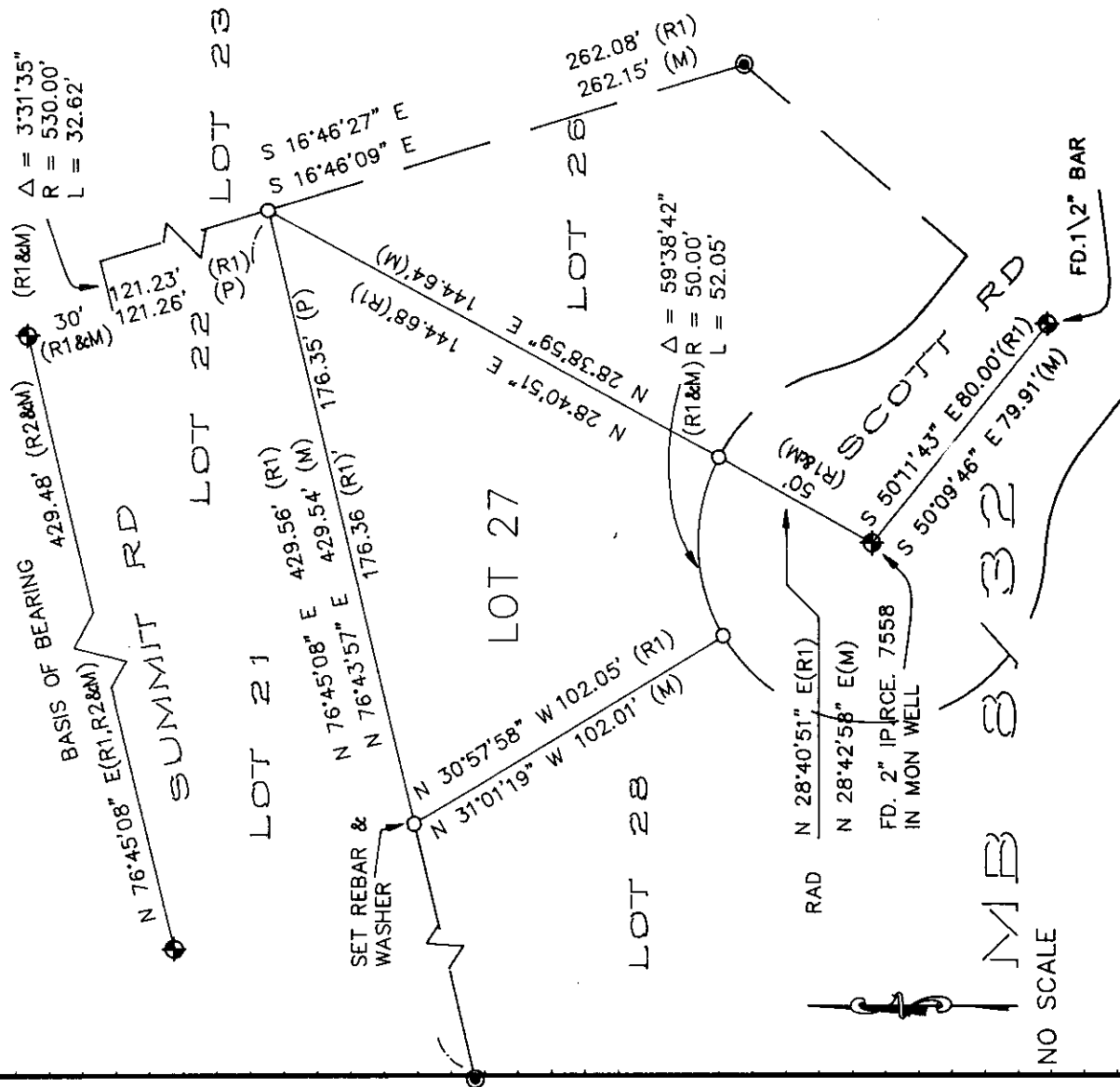
- FOUND SPIKE & TIN, ORIG. C/L MONUMENT PER MB 8/32 UNLESS NOTED OTHERWISE
- FOUND 2" IP & TAG, "LS 3462", NO. REF.
- SET 5/8" REBAR & CAP STAMPED "LS 4428" UNLESS NOTED OTHERWISE

R1 RECORD INFORMATION PER MB 8/32

R2 RECORD INFORMATION PER COR. REC. SUBMITTED 5-13-94

BASIS OF BEARING

THE CENTERLINE OF SUMMIT RD. PER MB 8/32-A SHOWN HEREON AS N 76°45'08"E,



trid/holmes associates

IN 4.0053