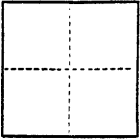


CORNER RECORD

CR 240

COUNTY OF Alameda T. 15 R. 3W MT. Diablo MERIDIAN CALIFORNIA

CORNER TYPE: GOV'T. CORNER ☐ MEANDER ☐ RANCHO ☐ CONTROL ☐ OTHER ☒
CORNER IDENTIFICATION — DATE OF VISIT July 22 1992



CORNER — LEFT AS FOUND ☐ FOUND AND TAGGED ☐ REESTABLISHED OBLITERATED CORNER ☐ REBUILT ☐

PHYSICAL DESCRIPTION OF CORNER FOUND; EVIDENCE AND METHOD USED TO IDENTIFY OR REESTABLISH

Lot 2, Tract 4037, (108 M 41) Alameda County Records

PHYSICAL DESCRIPTION OF MONUMENTS REBUILT OR PERPETUATED

See Legend Below

CALIFORNIA COORDINATE SYSTEM ORDER: FIRST ☐ SECOND ☐ THIRD ☐
STATIONS USED: NGS (USC & GS) ☐ STATE ☐ COUNTY ☐ OTHER ☐ STATION _____ STATION _____
ZONE _____ ELEVATION _____ NORTHINGS (Y) _____ EASTINGS (X) _____

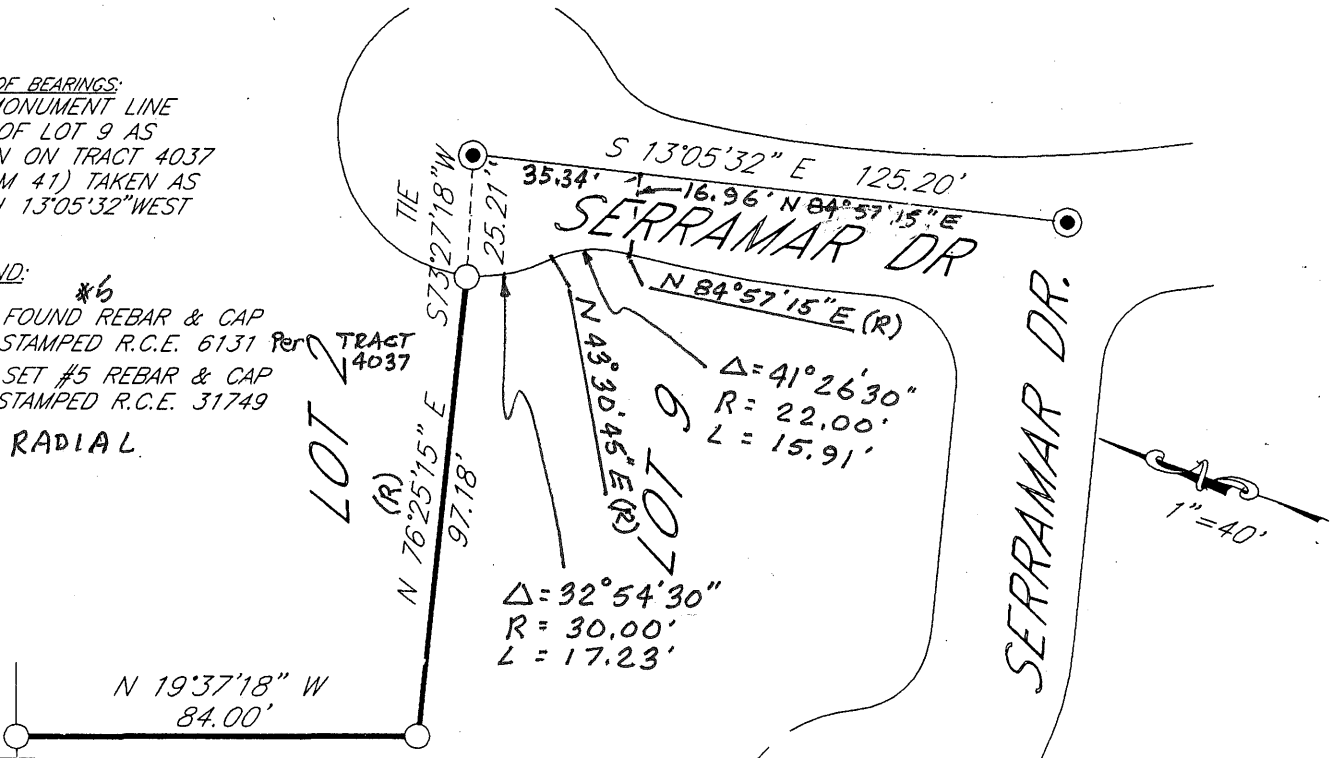
(Fold)

SKETCH: (Include reference tie or witness points, remarks and topo of area)

BASIS OF BEARINGS:
THE MONUMENT LINE
EAST OF LOT 9 AS
SHOWN ON TRACT 4037
(108 M 41) TAKEN AS
NORTH 13°05'32" WEST

LEGEND:

- *6
● = FOUND REBAR & CAP
STAMPED R.C.E. 6131 Per TRACT 4037
○ = SET #5 REBAR & CAP
STAMPED R.C.E. 31749
(R) = RADIAL

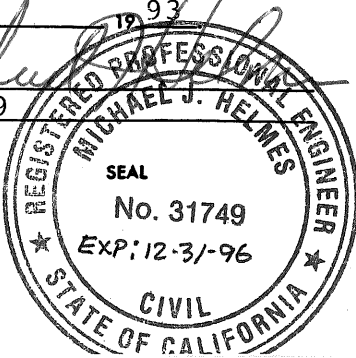


SURVEYOR'S CERTIFICATE

THIS CORNER RECORD WAS PREPARED BY ME OR UNDER MY
DIRECTION IN CONFORMANCE WITH THE LAND SURVEYORS ACT
ON November 3 1993

SIGNED: Michael J. Helmes

L.S. or R.C.E. No.: 31749



COUNTY SURVEYOR'S CERTIFICATE

THE CORNER RECORD WAS RECEIVED Feb 17 1993
AND EXAMINED AND FILED 11/1 1993

BY: Reid Penland

TITLE: DEPT. COUNTY SURVYR.

DOCUMENT No. 93-64
199729

STATEMENT ON BACK OF SHEET BK 2 CR. PG 96

YES ☐ NO ☒